


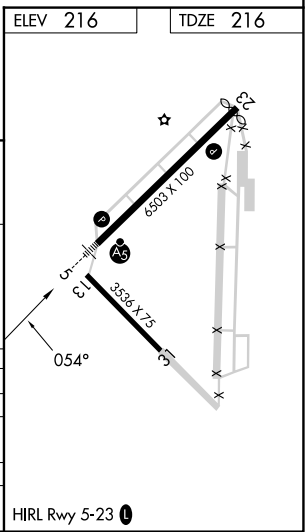
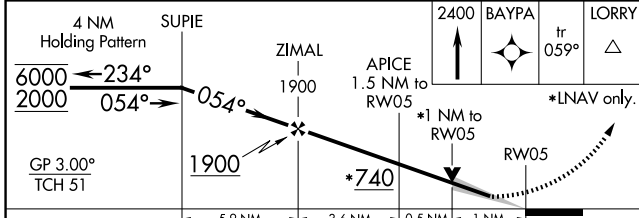
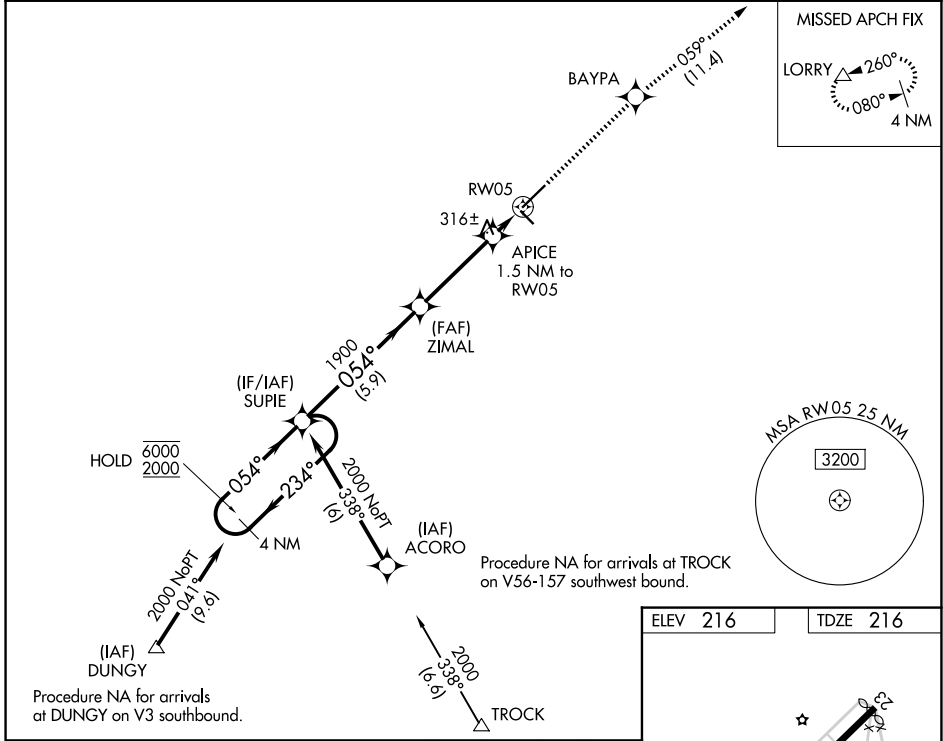
WAAS CH 90423 W05A	APP CRS 054°	Rwy Ldg 6503 TDZE 216 Apt Elev 216
--	------------------------	---

RNAV (GPS) RWY 5

LAURINBURG/MAXTON (MEB)

RNP APCH. <p>⚠ Circling to Rwy 13 and 31 NA at night. For uncompensated Baro-VNAV systems, LNAV/VNAV NA below -15°C or above 42°C. For inop ALS, increase LNAV/VNAV all Cats visibility to ¾ SM, and LNAV Cat C/D visibility to 1 SM.</p>	MALS R 	MISSED APPROACH: Climb to 2400 direct BAYPA and on track 059° to LORRY and hold.
--	---	--

ASOS 134.125	FAYETTEVILLE APP CON 127.8 343.725	UNICOM 122.8 (CTAF) 0
------------------------	--	---------------------------------



GP 3.00° TCH 51	5.9 NM	3.6 NM	0.5 NM	1 NM
CATEGORY	A	B	C	D
LPV DA		416-½	200 (200-½)	
LNAV/VNAV DA		472-½	256 (300-½)	
LNAV MDA	580-½	364 (400-½)	580-⅝	364 (400-⅝)
CIRCLING	740-1	524 (600-1)	780-1½ 564 (600-1½)	1020-2½ 804 (900-2½)

SE-2, 09 JUL 2026 to 06 AUG 2026

SE-2, 09 JUL 2026 to 06 AUG 2026