

HI-ILS Z or LOC Z RWY 14

LOC/DME I-CZH 110.5 Chan 42	APCH CRS 137°	Rwy Idg TDZE Arpt Elev 7701 27 30
---	-------------------------	---

[USAF]

JACKSONVILLE INTL (KJAX)

DME required. RADAR required for procedure entry.

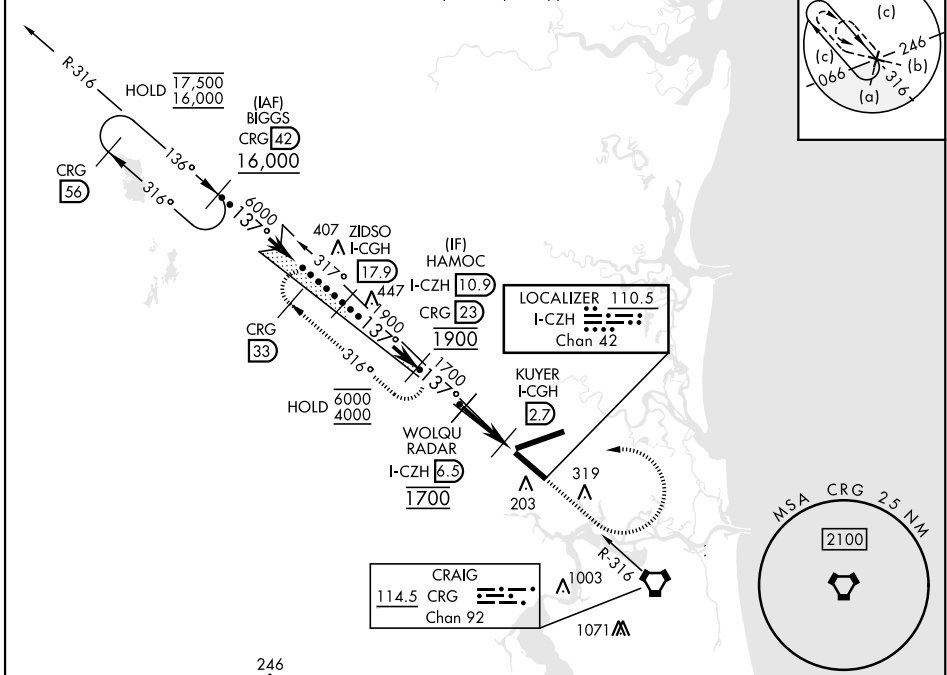
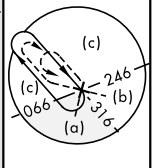
▼ * When ALS inop, increase vis to ¾ mile.
** When ALS inop, increase vis to 1 mile.



MISSED APPROACH: Climb to 2000, then climbing left turn to 4000 on CRG VORTAC R-316 to HAMOC/CRG 23 DME and hold, continue climb-in-hold to 4000.

ATIS 125.85	APP CON 119.0 269.9	TOWER 118.3 317.7	GND CON 121.9 348.6	CLNC DEL 119.5 290.275
-----------------------	-------------------------------	-----------------------------	-------------------------------	----------------------------------

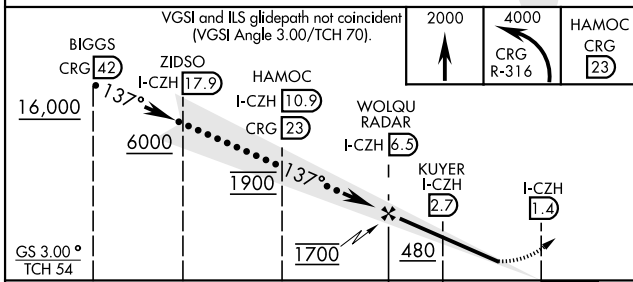
Rwy 14 helicopter visibility reduction below ¾ mile NA. Autopilot coupled approach NA below 750.



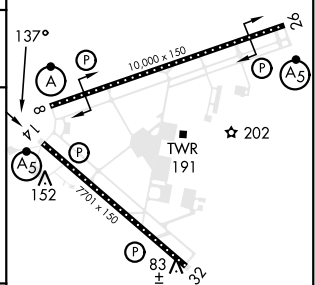
SE-3, 09 JUL 2026 to 06 AUG 2026

SE-3, 09 JUL 2026 to 06 AUG 2026

EMERG SAFE ALT 100 NM 2800 FROM CRG VORTAC



ELEV	30	TDZE	27
------	----	------	----



CATEGORY	C	D	E
S-ILS 14 *	306-¾	279 (300-¾)	
S-LOC 14 **	380-¾	353 (400-¾)	
CIRCLING	600-1½ 570 (600-1½)	600-2 570 (600-2)	760-2½ 730 (800-2½)

HIRL Rwy 8-26, 14-32 REIL Rwy 32 TDZL/RCLS Rwy 8, 14, 26					
FAF to MAP 5.1 NM					
Knots	120	140	160	180	200
Min:Sec	2:33	2:11	1:55	1:42	1:32

HI-ILS Z or LOC Z RWY 14