

LOC/DME I-CZH <b>110.5</b> Chan <b>42</b>	APP CRS <b>137°</b>	Rwy Ldg <b>7701</b> TDZE <b>27</b> Apt Elev <b>30</b>
---	------------------------	---

# ILS Y or LOC Y RWY 14

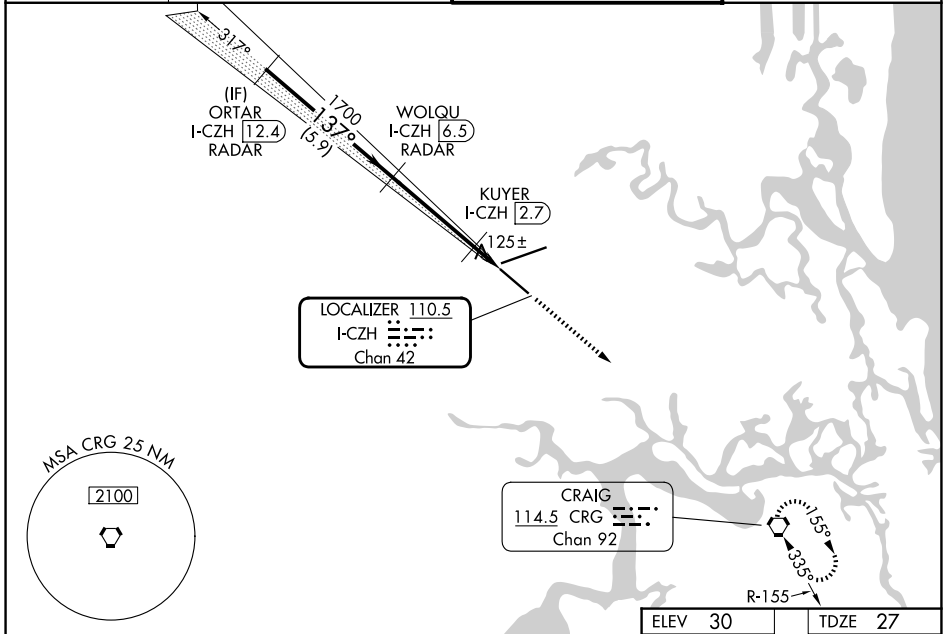
JACKSONVILLE INTL (JAX)

RADAR required for procedure entry. DME or RADAR required.

▼ Rwy 14 helicopter visibility reduction below 3/4 SM NA. Autopilot coupled approach NA below 750 feet MSL. For inop ALS, increase S-LOC 14 Cats A/B visibility to 1 SM. KUYER fix minimums: for inop ALS, increase S-LOC 14 all Cats visibility to 1 SM.

MALSR MISSED APPROACH: Climb to 3000 direct CRG VORTAC and hold.

D-ATIS <b>125.85</b>	JACKSONVILLE APP CON <b>119.0 269.9</b>	JACKSONVILLE TOWER <b>118.3 317.7</b>	GND CON <b>121.9 348.6</b>
-------------------------	--	--	-------------------------------



ORTAR I-CZH 12.4 RADAR		VGSi and ILS glidepath not coincident (VGSi Angle 3.00/TCH 70).		ELEV 30	CRG
2000		1700		↑	
GS 3.00° TCH 54		KUYER I-CZH 2.7		3000	
5.9 NM		3.8 NM		10000 X 150	
137°		1700		701 X 150	
1700		480		TWR	
1.3 NM		I-CZH 1.4		AS	
CATEGORY	A	B	C	D	
S-ILS 14	306-3/4 279 (300-3/4)				
S-LOC 14	480-3/4 453 (500-3/4)		480-7/8 453 (500-7/8)		
CIRCLING	520-1 490 (500-1)		600-1 1/2 570 (600-1 1/2)		600-2 570 (600-2)
KUYER FIX MINIMUMS (DME REQUIRED)					
S-LOC 14	380-3/4 353 (400-3/4)				
CIRCLING	520-1 490 (500-1)		600-1 1/2 570 (600-1 1/2)		600-2 570 (600-2)
REIL Rwy 32					
TDZL/RCLS Rwy 8, 14, and 26					
HIRL Rwy 8-26 and 14-32					
FAF to MAP 5.1 NM					
Knots	60	90	120	150	180
Min:Sec	5:06	3:24	2:33	2:02	1:42