

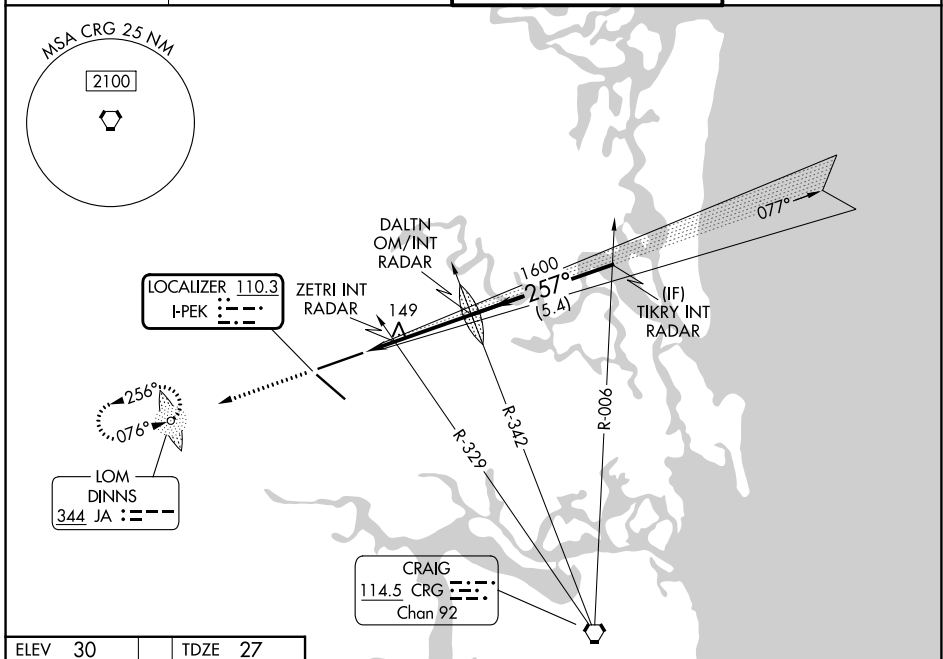
LOC I-PEK <b>110.3</b>	APP CRS <b>257°</b>	Rwy Ldg <b>10000</b> TDZE <b>27</b> Apt Elev <b>30</b>
---------------------------	------------------------	--

# ILS Y or LOC Y RWY 26

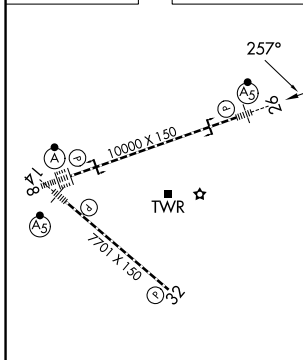
JACKSONVILLE INTL (JAX)

ADF required. RADAR required for procedure entry.	MALSR 	MISSED APPROACH: Climb to 3000 direct DINNS LOM and hold, continue climb-in-hold to 3000.
For inop ALS, ZETRI Fix Minimums: increase S-LOC 26 Cats C/D visibility to RVR 5500.		

D-ATIS <b>125.85</b>	JACKSONVILLE APP CON <b>119.0 269.9</b>	JACKSONVILLE TOWER <b>118.3 317.7</b>	GND CON <b>121.9 348.6</b>
-------------------------	--	--	-------------------------------



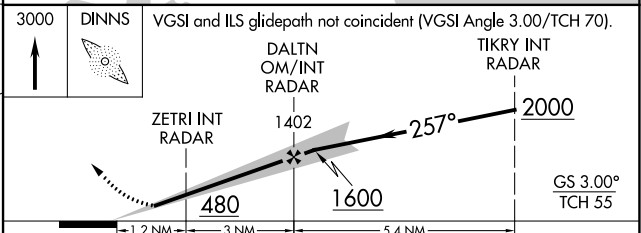
ELEV 30	TDZE 27
---------	---------



REIL Rwy 32  
TDZL/RCLS Rws 8, 14, and 26  
HIRL Rws 8-26 and 14-32

FAF to MAP 4.2 NM

Knots	60	90	120	150	180
Min:Sec	4:12	2:48	2:06	1:41	1:24



CATEGORY	A	B	C	D
S-ILS 26	227/18 200 (200-½)			
S-LOC 26	480/24	453 (500-½)	480/45	453 (500-¾)
CIRCLING	520-1	490 (500-1)	580-1½	580-2 550 (600-2)
ZETRI FIX MINIMUMS (DUAL VOR RECEIVERS REQUIRED)				
S-LOC 26	400/24	373 (400-½)	400/35	373 (400-¾)
CIRCLING	520-1	490 (500-1)	580-1½	580-2 550 (600-½)

SE-3, 09 JUL 2026 to 06 AUG 2026

SE-3, 09 JUL 2026 to 06 AUG 2026