

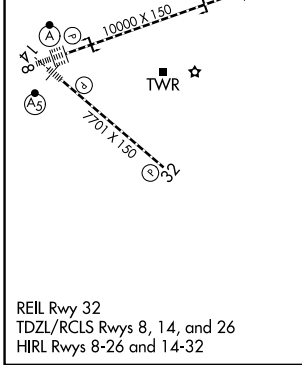
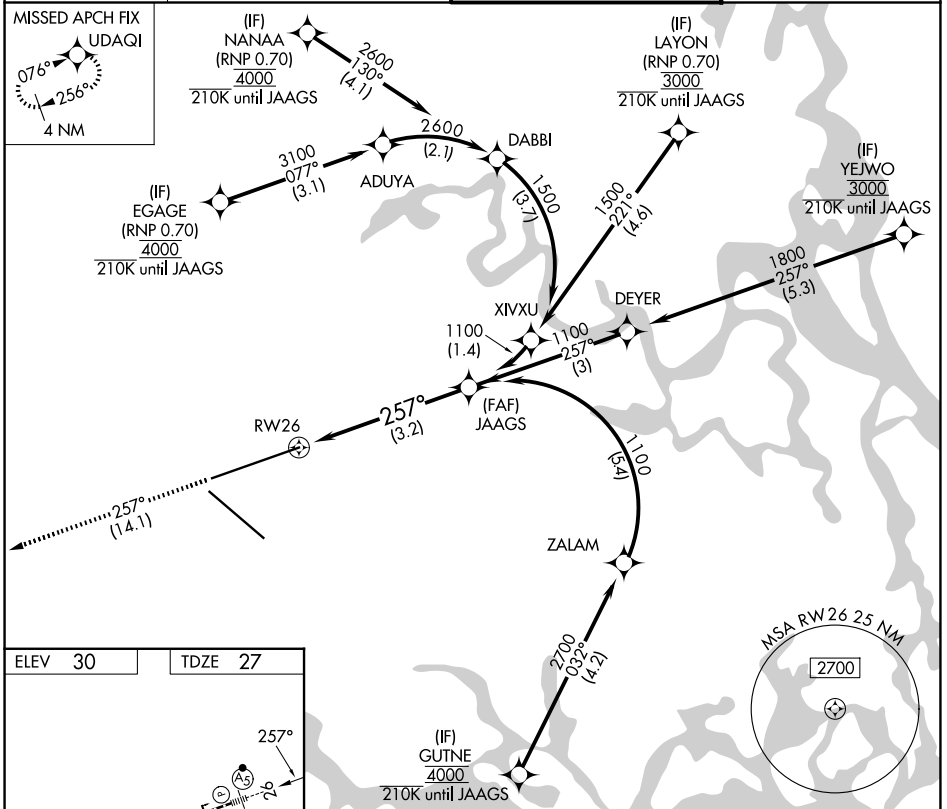
# RNAV (RNP) Y RWY 26

JACKSONVILLE INTL (JAX)

APP CRS	Rwy Ldg	<b>10000</b>
<b>257°</b>	TDZE	<b>27</b>
	Apt Elev	<b>30</b>

RNP AR APCH-GPS.	MALSR	MISSED APPROACH: Climb to 2000 on track 257° to UDAQI and hold.
For uncompensated Baro-VNAV systems, procedure NA below -5°C or above 54°C.		

D-ATIS <b>125.85</b>	JACKSONVILLE APP CON <b>119.0 269.9</b>	JACKSONVILLE TOWER <b>118.3 317.7</b>	GND CON <b>121.9 348.6</b>
-------------------------	--	--	-------------------------------



2000	UDAQI	VGSi and RNAV glidepath not coincident (VGSi Angle 3.00/TCH 70).	
tr 257°			
See planview for multiple IF locations.			
		JAAGS 1100	1100
		GP 3.00° TCH 49	
3.2 NM			
CATEGORY	A	B	C
RNP 0.30 DA	419/35 392 (400-5%)		
<b>AUTHORIZATION REQUIRED</b>			

SE-3, 09 JUL 2026 to 06 AUG 2026

SE-3, 09 JUL 2026 to 06 AUG 2026