

# RNAV (RNP) Y RWY 8

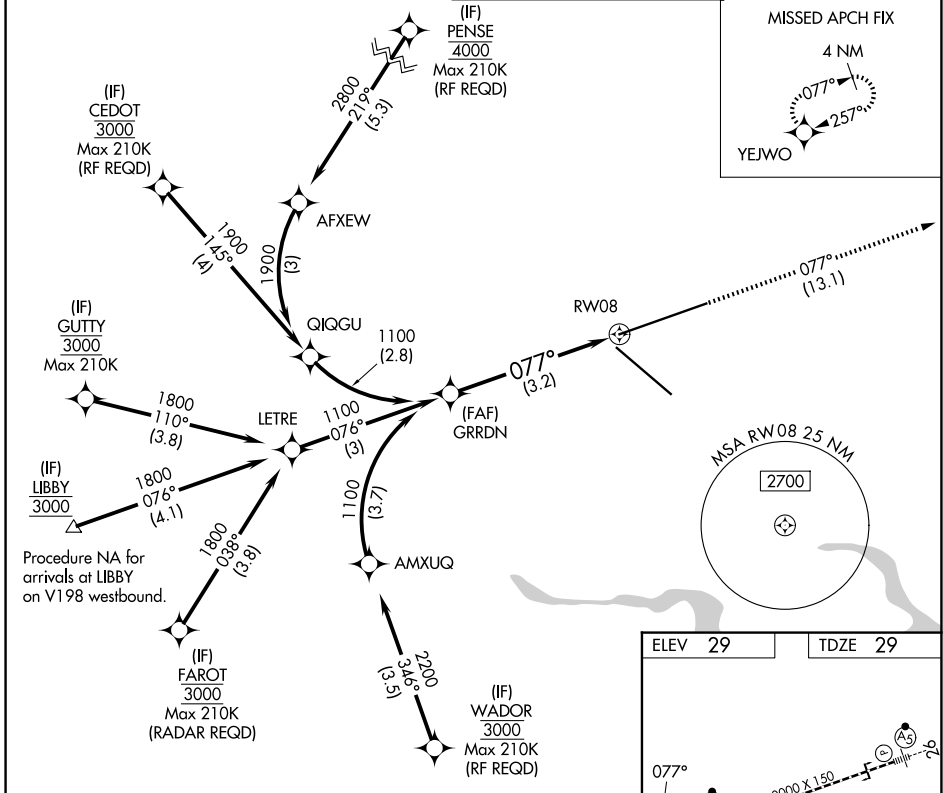
JACKSONVILLE INTL (JAX)

APP CRS	Rwy Ldg	<b>10000</b>
<b>077°</b>	TDZE	<b>29</b>
	Apt Elev	<b>29</b>

▼ For uncompensated Baro-VNAV systems, procedure NAL below -5°C (23°F) or above 54°C (130°F). GPS required. For inop MALSR, increase RNP 0.11 all Cats visibility to 1 mile, increase RNP 0.30 all Cats visibility to 1½ mile.

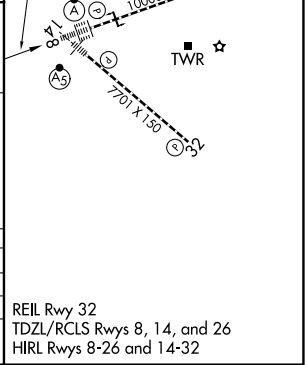
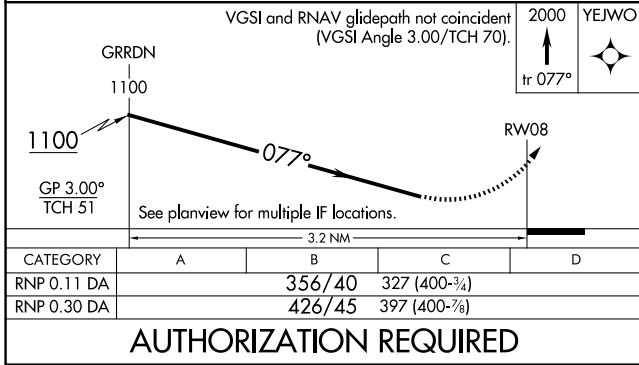
ALSIF-2 MISSED APPROACH: Climb to 2000 on track 077° to YEJWO and hold.

D-ATIS <b>125.85</b>	JACKSONVILLE APP CON <b>119.0 269.9</b>	JACKSONVILLE TOWER <b>118.3 317.7</b>	GND CON <b>121.9 348.6</b>
-------------------------	--	--	-------------------------------



SE-3, 09 JUL 2026 to 06 AUG 2026

SE-3, 09 JUL 2026 to 06 AUG 2026



REIL Rwy 32  
TDZL/RCLS Rwy 8, 14, and 26  
HIRL Rwy 8-26 and 14-32