

WAAS CH 40199 W32A	APP CRS 317°	Rwy Ldg TDZE Apt Elev	7701 24 30
--	------------------------	-----------------------------	---------------------------------------

RNAV (GPS) Z RWY 32

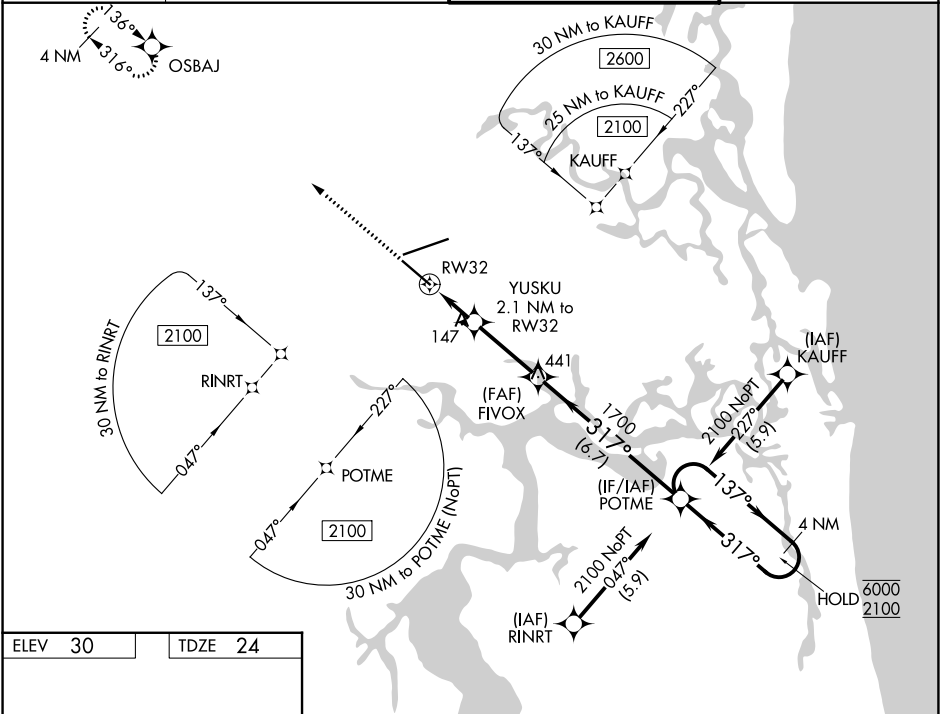
JACKSONVILLE INTL (JAX)

RNP APCH - GPS.

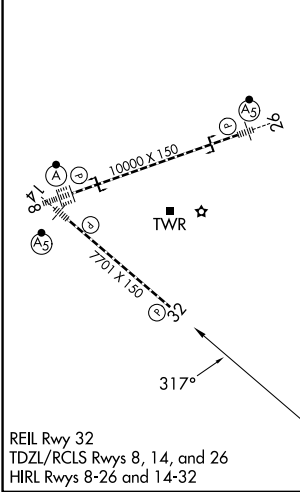
▼ Rwy 32 helicopter visibility reduction below 3/4 SM NA. For uncompensated Baro-VNAV systems, LNAV/VNAV NA below -2°C or above 54°C.

MISSED APPROACH: Climb to 2000 direct OSBAJ and hold.

D-ATIS 125.85	JACKSONVILLE APP CON 119.0 269.9	JACKSONVILLE TOWER 118.3 317.7	GND CON 121.9 348.6
-------------------------	--	--	-------------------------------



ELEV 30	TDZE 24
---------	---------



2000 OSBAJ	VGSI and RNAV glidepath not coincident (VGSI Angle 3.00/TCH 67).			4 NM Holding Pattern
↑	YUSKU 2.1 NM to RW32	FIVOX 1700	POTME	6000
	1 NM	1.1 NM	3 NM	6.7 NM
	740	1700	6000	2100
	137°	317°	317°	
				GP 3.00° TCH 50
CATEGORY	A	B	C	D
LPV DA		256-3/4	232 (300-3/4)	
LNAV/VNAV DA		400-1	376 (400-1)	
LNAV MDA		400-1	376 (400-1)	
CIRCLING	520-1	490 (500-1)	580-1/2 550 (600-1/2)	580-2 550 (600-2)

SE-3, 09 JUL 2026 to 06 AUG 2026

SE-3, 09 JUL 2026 to 06 AUG 2026