

ILS or LOC RWY 26R

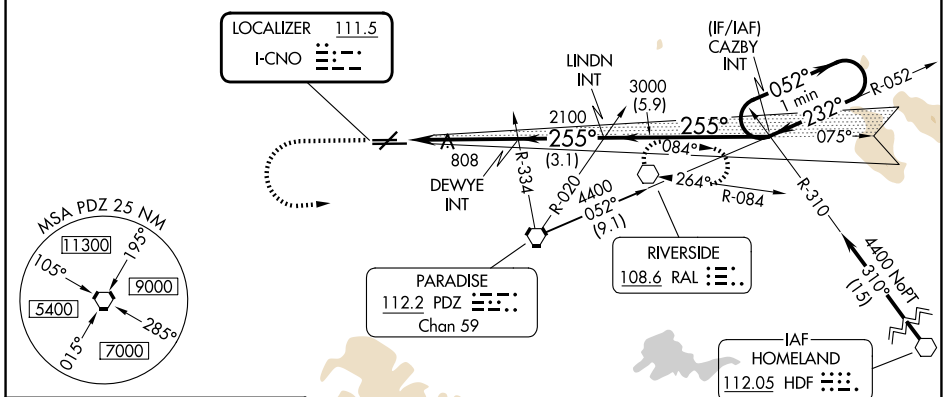
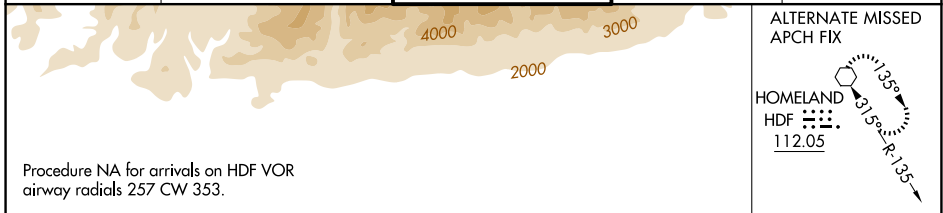
CHINO (CNO)

LOC I-CNO 111.5	APP CRS 255°	Rwy Ldg 4858
		TDZE 636
		Apt Elev 650

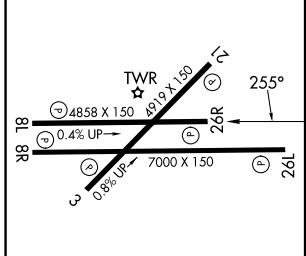
▼ Helicopter visibility reduction below 3/4 SM NA.
▲ When local altimeter setting not received, use Ontario altimeter setting and increase DA to 940 feet and all visibilities 1/4 SM; increase all MDAs 60 feet and visibility S-LOC 26R and Circling Cat C and D 1/4 SM.

MISSED APPROACH: Climb to 1100 then climbing left turn to 4500 direct RAL VOR and hold, continue climb-in-hold to 4500.

ATIS 125.85	SOCAL APP CON 135.4 377.125	CHINO TOWER ★ 118.5 (CTAF)	GND CON 121.6	UNICOM 122.95
-----------------------	---------------------------------------	--------------------------------------	-------------------------	-------------------------



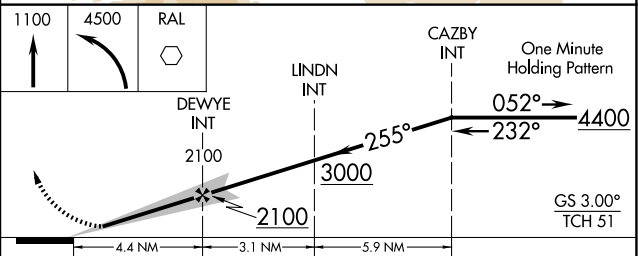
ELEV 650	TDZE 636
----------	----------



REIL Rwy 3 and 21
 MIRL Rwy 3-21 and 8R-26L
 HIRL Rwy 8L-26R

FAF to MAP 4.4 NM

Knots	60	90	120	150	180
Min:Sec	4:24	2:56	2:12	1:46	1:28



CATEGORY	A	B	C	D
S-ILS 26R	886-3/4 250 (300-3/4)			
S-LOC 26R	1060-1	424 (500-1)	1060-1 1/4	424 (500-1 1/4)
CIRCLING	1180-1 530 (600-1)	1200-1 550 (600-1)	1240-1 1/2 590 (600-1 1/2)	1340-2 1/4 690 (700-2 1/4)

SW-3, 09 JUL 2026 to 06 AUG 2026

SW-3, 09 JUL 2026 to 06 AUG 2026