

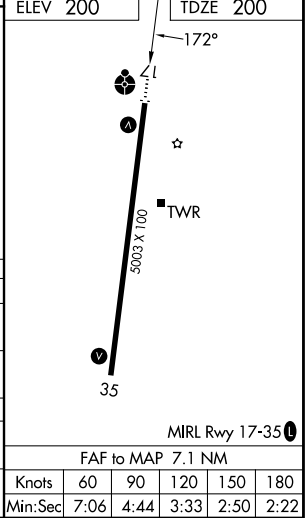
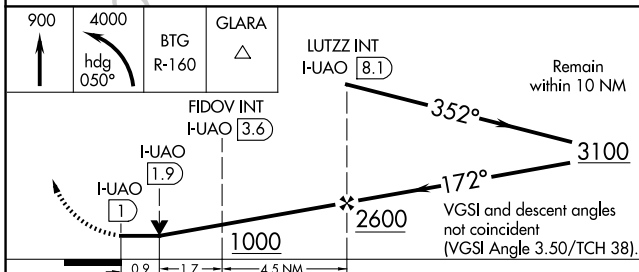
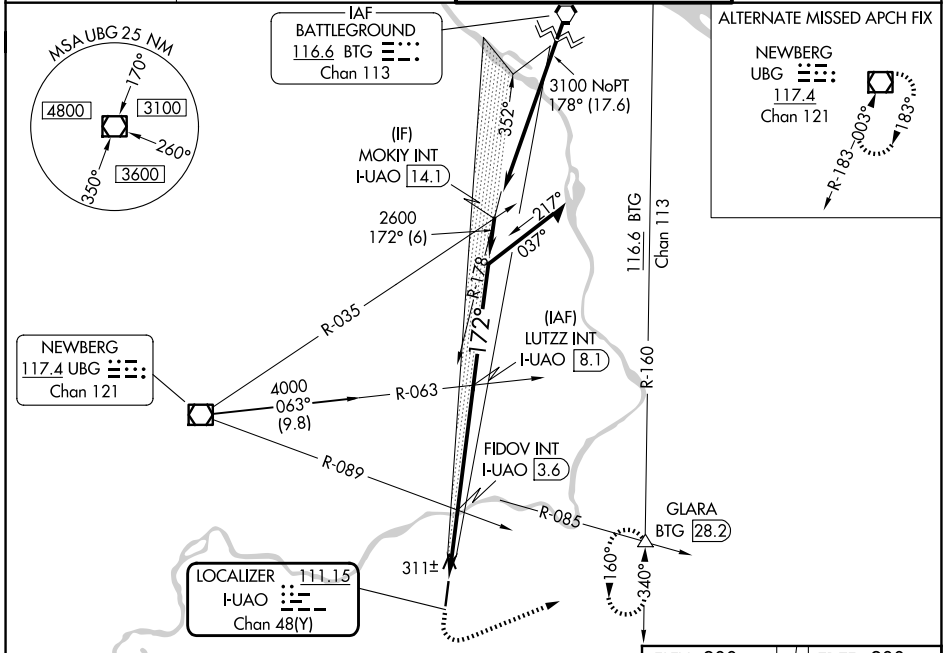
LOC/DME I-UAO <b>111.15</b> Chan 48(Y)	APP CRS <b>172°</b>	Rwy Ldg TDZE <b>200</b> Apt Elev <b>200</b>
--	------------------------	---

# LOC RWY 17

AURORA STATE (UAO)

<p>▼ Rwy 17 helicopter visibility reduction below 3/4 SM NA.</p> <p>▲ FIDOV fix minimums: Inop table does not apply to Cats C/D. For inop ALS, increase S-17 Cats C/D visibility to 2 1/2 SM.</p>	<p>ODALS</p>	<p>MISSED APPROACH: Climb to 900 then climbing left turn to 4000 on heading 050° and BTG R-160 to GLARA INT/BTG 28.2 DME and hold, continue climb-in-hold to 4000.</p>
---	--------------	--

<p>ATIS <b>118.525</b></p>	<p>PORTLAND APP CON <b>126.0 269.175</b></p>	<p>AURORA TOWER★ <b>120.35 (CTAF) 0</b></p>	<p>GND CON <b>119.15</b></p>
--------------------------------	--	---	----------------------------------



CATEGORY	A	B	C	D
S-17	1000-3/4 800 (800-3/4)	1000-1 800 (800-1)	1000-2	800 (800-2)
CIRCLING	1000-1 800 (800-1)	1000-1 1/4 800 (800-1 1/4)	1000-2 1/2	800 (800-2 1/2)
FIDOV FIX MINIMUMS				
S-17	580-3/4 380 (400-3/4)		580-1 380 (400-1)	
CIRCLING	700-1 500 (500-1)		700-1 1/2 940-2 1/4 500 (500-1 1/2) 740 (800-2 1/4)	

NW-1, 09 JUL 2026 to 06 AUG 2026

NW-1, 09 JUL 2026 to 06 AUG 2026