

WAAS CH 61335 W35A	APP CRS 348°	Rwy Ldg TDZE Apt Elev	5002 927 936
--	------------------------	-----------------------------	---

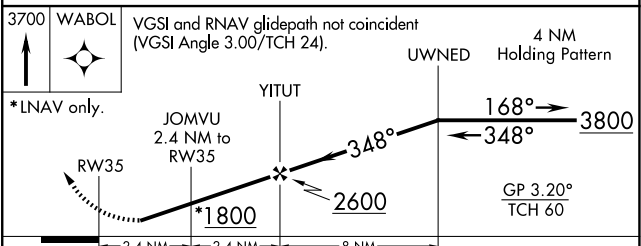
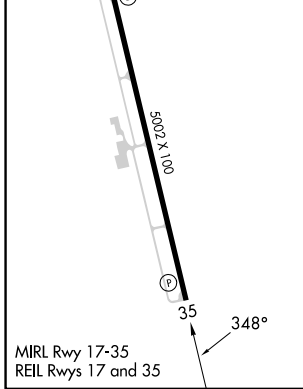
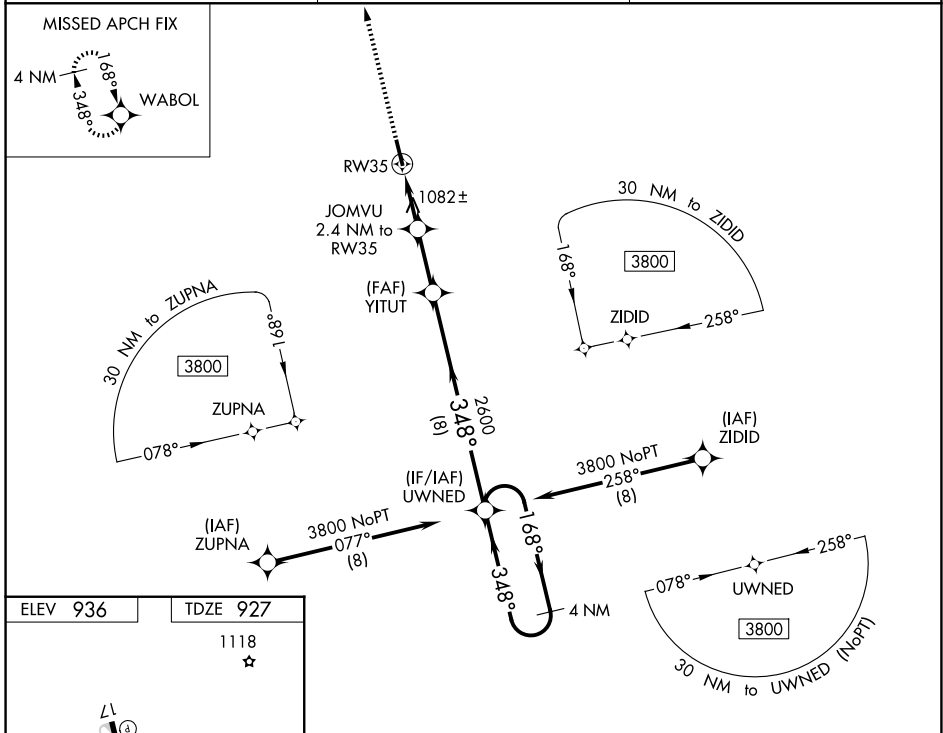
RNAV (GPS) RWY 35

LAWRENCEBURG/LAWRENCE COUNTY (FLEEMAN FLD) (2M2)

⚠ NA Circling Rwy 17 NA at night. For uncompensated Baro-VNAV systems, LNAV/VNAV NA below -16°C (5°F) or above 54°C (130°F). DME/DME RNP-0.3 NA. When local altimeter setting not received, use Huntsville Intl-Carl T Jones Fld altimeter setting and increase all DA 142 feet and all MDA 140 feet; increase LPV all Cats visibility ¼ mile, LNAV/VNAV all Cats visibility ⅜ mile. Rwy 17 helicopter visibility reduction below 1 SM NA. Rwy 35 helicopter visibility reduction below ¾ SM NA.

MISSED APPROACH: Climb to 3700 direct WABOL and hold.

AWOS-3 120.175	MEMPHIS CENTER 125.85 379.25	UNICOM 122.8 (CTAF)
--------------------------	--	-------------------------------



CATEGORY	A	B	C	D
LPV DA	1293-1½	366 (400-1½)		NA
LNAV/VNAV DA	1354-1¼	427 (500-1¼)		NA
LNAV MDA	1340-1	413 (500-1)		NA
CIRCLING	1500-1	564 (600-1)		NA

RNAV (GPS) RWY 35

SE-1, 09 JUL 2026 to 06 AUG 2026

SE-1, 09 JUL 2026 to 06 AUG 2026