

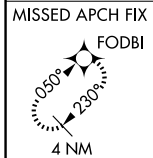
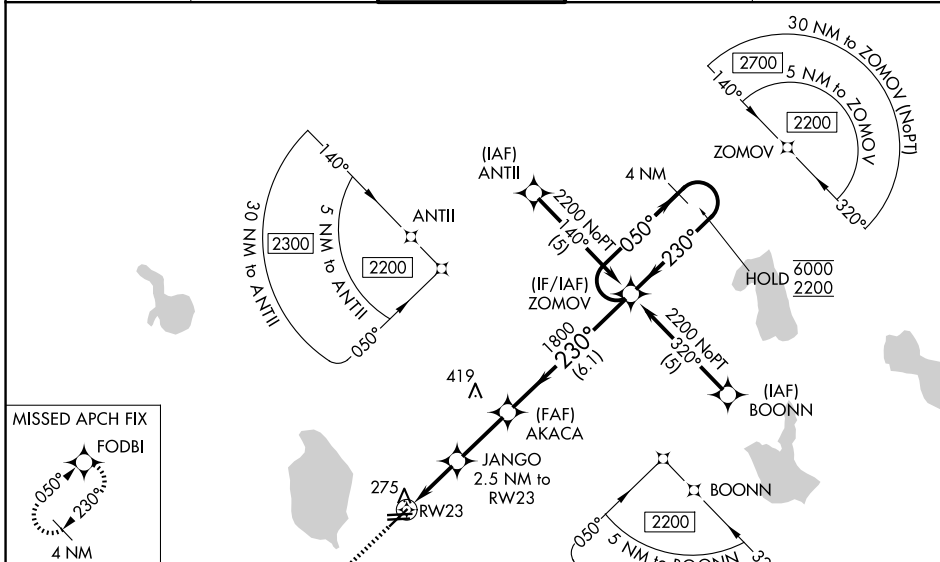
WAAS CH <b>63112</b> <b>W23A</b>	APP CRS <b>230°</b>	Rwy Ldg TDZE Apt Elev	<b>5001</b> <b>124</b> <b>125</b>
--	------------------------	-----------------------------	---

# RNAV (GPS) RWY 23

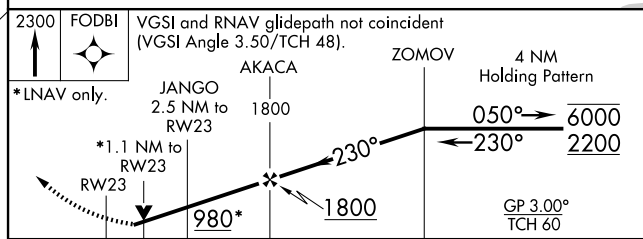
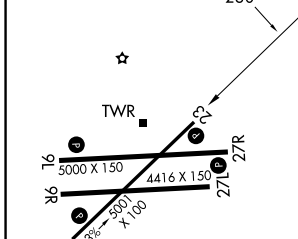
BARTOW EXEC (BOW)

RNP APCH.	<p><b>⚠</b> Rwy 23 helicopter visibility reduction below ¼ SM NA. When local altimeter setting not received, use Tampa Intl altimeter setting and increase LPV DA to 560 feet, LNAV/VNAV DA to 681 feet and all MDA 120 feet, increase LPV all Cats visibility ¼ SM, LNAV/VNAV all Cats ½ SM, LNAV Cat C ¼ SM, Cat D ½ SM. For uncompensated Baro-VNAV systems, LNAV/VNAV NA below -15°C or above 54°C. VDP and Baro-VNAV NA when using Tampa Intl altimeter setting.</p>	<p>MISSED APPROACH: Climb to 2300 direct FODBI and hold.</p>

AWOS-3 <b>123.775</b>	TAMPA APP CON <b>120.65 290.3</b>	<b>BARTOW TOWER ★</b> <b>121.20</b> (CTAF)	GND CON <b>121.9</b>	UNICOM <b>122.95</b>
--------------------------	--------------------------------------	---	-------------------------	-------------------------



ELEV 125	TDZE 124
----------	----------



CATEGORY	A	B	C	D
LPV DA	454-1 330 (400-1)			
LNAV/VNAV DA	575-1½ 451 (500-1½)			
LNAV MDA	580-1 456 (500-1)	580-1⅝ 456 (500-1⅝)	580-1½ 456 (500-1½)	

SE-3, 09 JUL 2026 to 06 AUG 2026

SE-3, 09 JUL 2026 to 06 AUG 2026