

WAAS CH <b>82412</b> <b>W27A</b>	APP CRS <b>271°</b>	Rwy Ldg <b>5000</b> TDZE <b>125</b> Apt Elev <b>125</b>
--	------------------------	---

# RNAV (GPS) RWY 27R

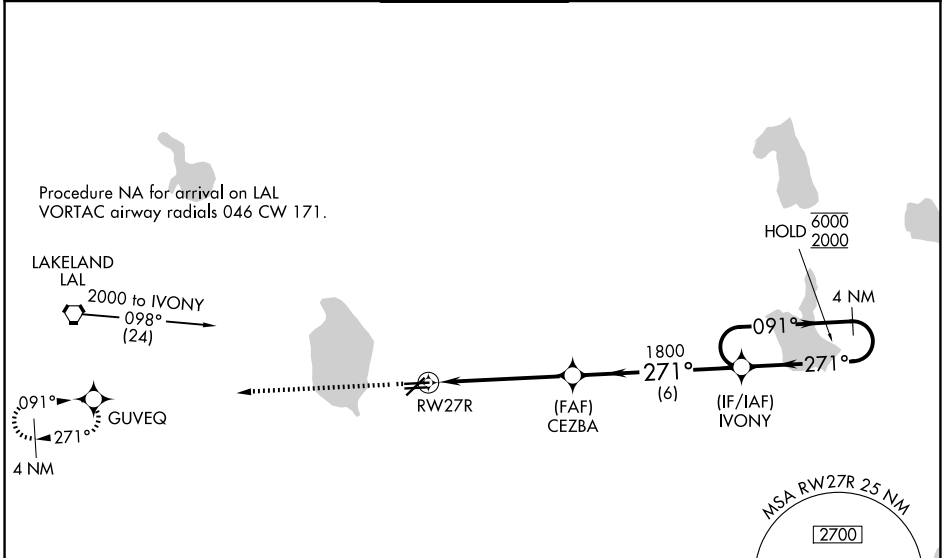
BARTOW EXEC (BOW)

RNP APCH - GPS.

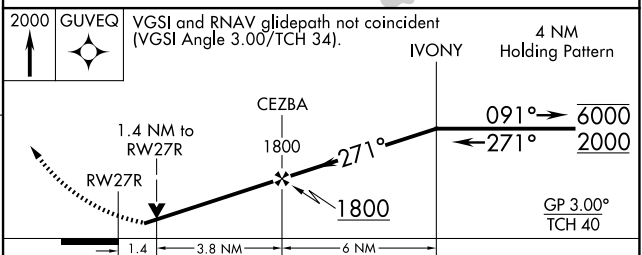
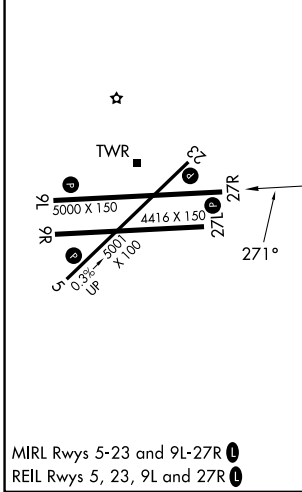
**⚠** Rwy 27R helicopter visibility reduction below 3/4 SM NA. Baro-VNAV and VDP NA when using TPA altimeter setting. For uncompensated Baro-VNAV systems, LNAV/VNAV NA below -15°C or above 54°C. When local altimeter setting not received, use TPA altimeter setting and increase LPV DA to 579 feet, LNAV/VNAV DA to 686 feet and all MDA 120 feet. Increase LPV visibility all Cats 3/8 SM, LNAV/VNAV visibility all Cats 1/4 SM, and LNAV visibility Cats C/D 3/8 SM.

MISSED APPROACH: Climb to 2000 direct GUYEQ and hold.

AWOS-3 <b>123.775</b>	TAMPA APP CON <b>120.65 290.3</b>	<b>BARTOW TOWER ★</b> <b>121.2</b> (CTAF)	GND CON <b>121.9</b>	UNICOM <b>122.95</b>
--------------------------	--------------------------------------	--	-------------------------	-------------------------



ELEV 125	TDZE 125
----------	----------



CATEGORY	A	B	C	D
LPV DA		470-1	345 (400-1)	
LNAV/VNAV DA		577-1 <sup>3</sup> / <sub>8</sub>	452 (500-1 <sup>3</sup> / <sub>8</sub> )	
LNAV MDA	600-1	475 (500-1)	600-1 <sup>3</sup> / <sub>8</sub>	475 (500-1 <sup>3</sup> / <sub>8</sub> )

SE-3, 09 JUL 2026 to 06 AUG 2026

SE-3, 09 JUL 2026 to 06 AUG 2026