

VOR/DME CHE 115.6 Chan 103	APP CRS 285°	Rwy Ldg TDZE Apt Elev 6606	N/A N/A
--	------------------------	---	--------------------------

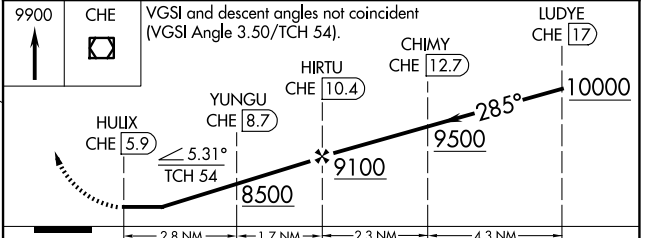
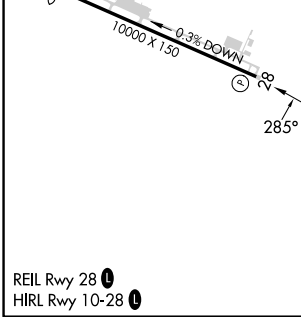
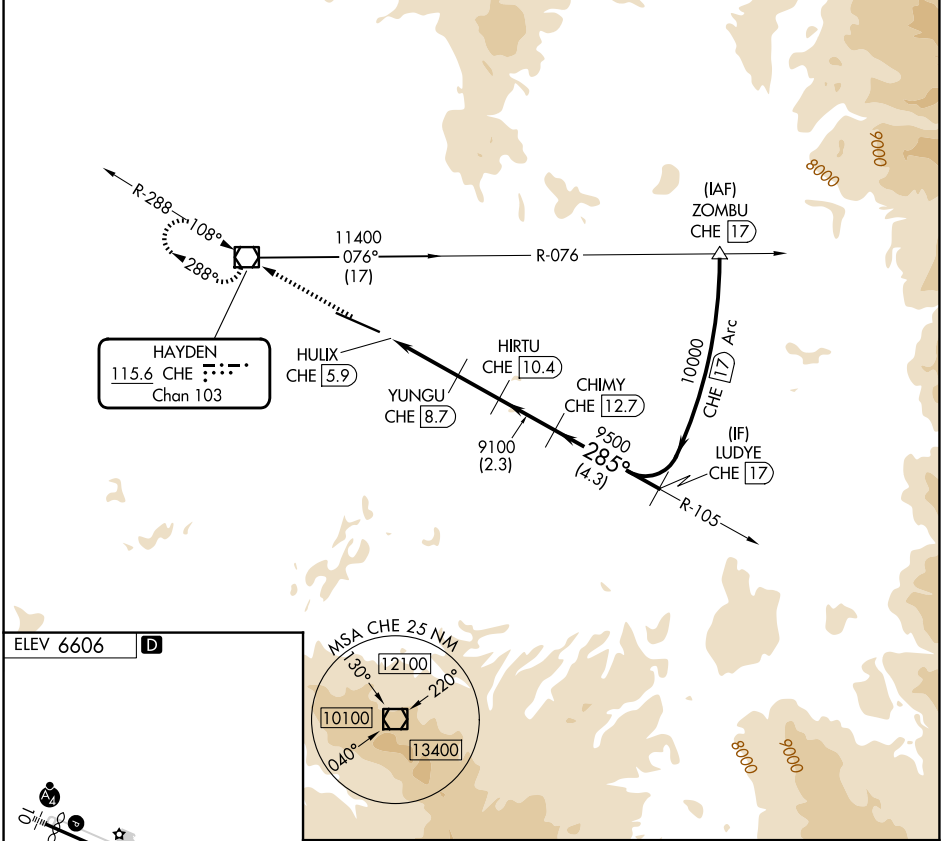
VOR-B
YAMPA VALLEY (HDN)

DME required.

⚠ Rwy 28 helicopter visibility reduction below 3/4 SM NA.

MISSED APPROACH: Climb to 9900 direct CHE VOR/DME and hold, continue climb-in-hold to 9900.

AWOS-3PT 119.275	DENVER CENTER 120.475 235.975	UNICOM 123.0 (CTAF) 0
----------------------------	---	---------------------------------



CATEGORY	A	B	C	D
CIRCLING	7900-1¼ 1294 (1300-1¼)	7900-1½ 1294 (1300-1½)	7900-3 1294 (1300-3)	8200-3 1594 (1600-3)

SW-1, 09 JUL 2026 to 06 AUG 2026

SW-1, 09 JUL 2026 to 06 AUG 2026