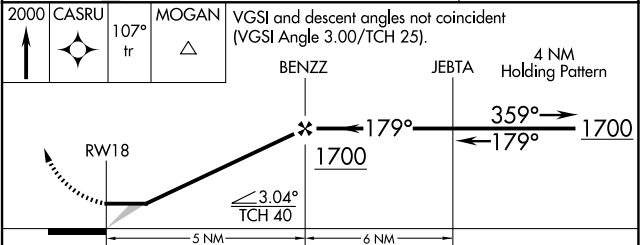
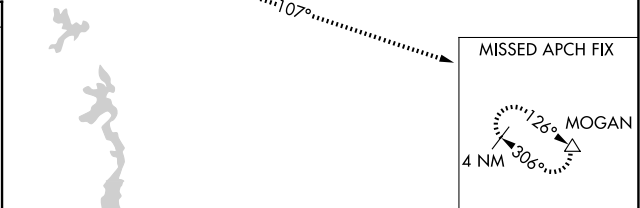
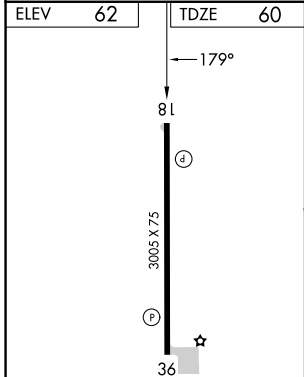
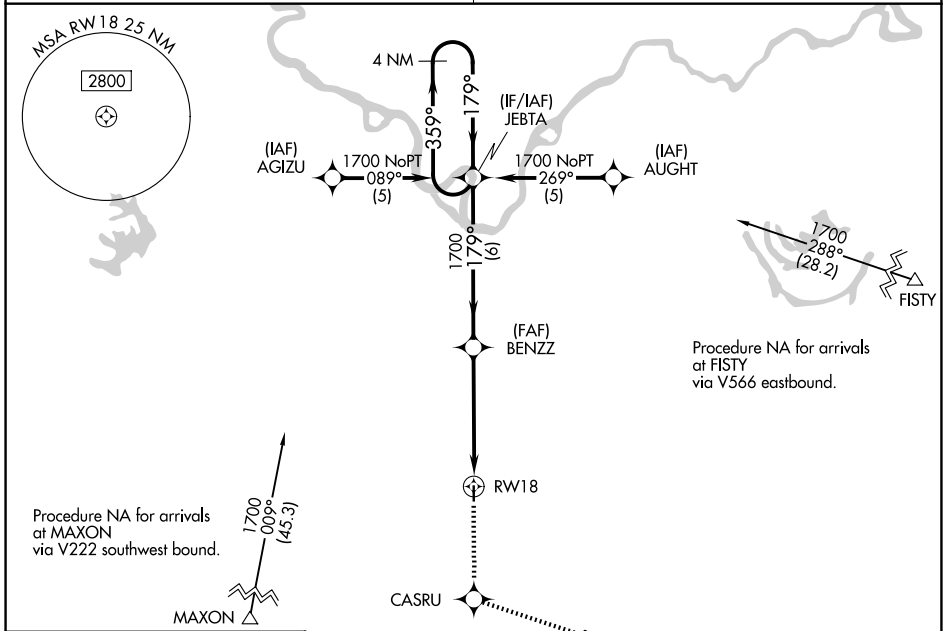


APP CRS	Rwy Ldg	<b>3005</b>
<b>179°</b>	TDZE	<b>60</b>
	Apt Elev	<b>62</b>

# RNAV (GPS) RWY 18

BUNKIE MUNI (2R6)

RNP APCH.	MISSED APPROACH: Climb to 2000 direct CASRU and via 107° track to MOGAN and hold.
<p>▼ ▲NA</p> <p>Use Alexandria Intl altimeter setting; when not received, use Esler Rgnl altimeter setting.</p>	
MAKS APP CON <b>125.4 302.2</b>	CTAF <b>122.9</b>



CATEGORY	A	B	C	D
LNAV MDA	600-1	540 (600-1)	NA	

REIL Rwy 18 and 36  
MIRL Rwy 18-36

SC-4, 09 JUL 2026 to 06 AUG 2026

SC-4, 09 JUL 2026 to 06 AUG 2026