

APP CRS	Rwy Ldg	<b>3005</b>
<b>359°</b>	TDZE	<b>60</b>
	Apt Elev	<b>62</b>

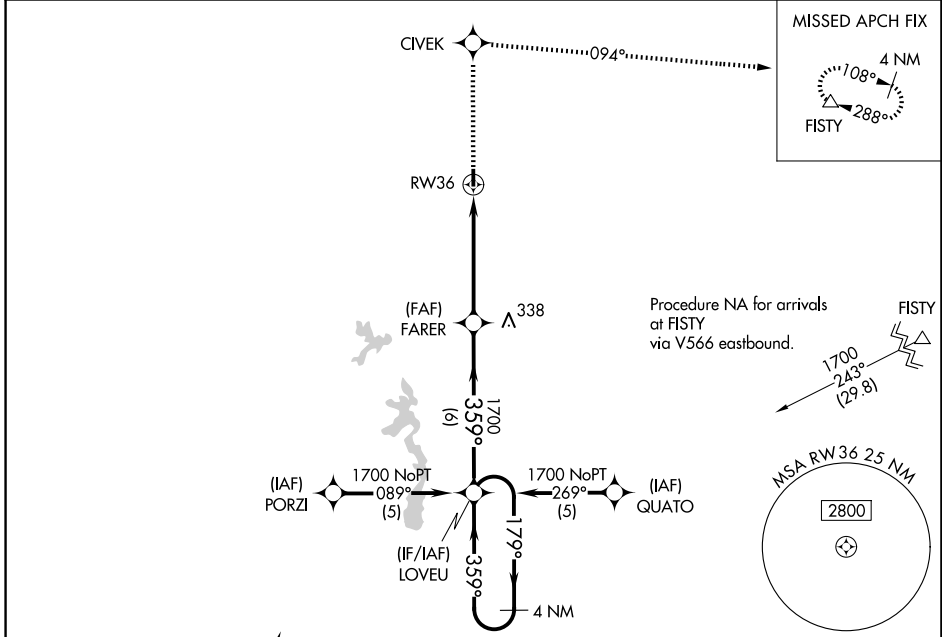
# RNAV (GPS) RWY 36

BUNKIE MUNI (2R6)

**⚠** NA DME/DME RNP-0.3 NA. Visibility reduction by helicopters NA. Use Alexandria Intl altimeter setting; when not received, use Esler Rgnl altimeter setting.

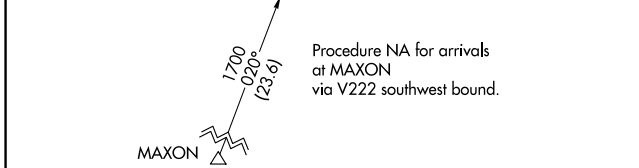
MISSED APPROACH: Climb to 4000 direct CIVEK and right turn via 094° track to FISTY and hold.

MAKS APP CON <b>125.4 302.2</b>	CTAF <b>122.9</b>
------------------------------------	----------------------



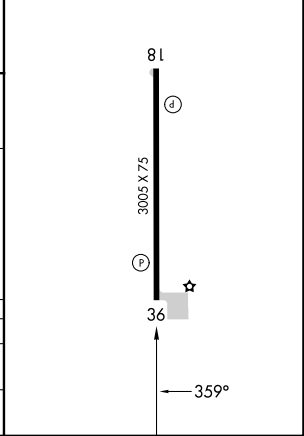
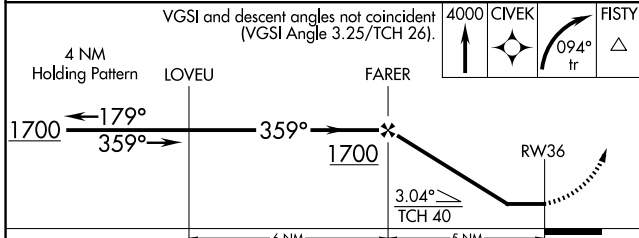
SC-4, 09 JUL 2026 to 06 AUG 2026

SC-4, 09 JUL 2026 to 06 AUG 2026



ELEV	<b>62</b>	TDZE	<b>60</b>
------	-----------	------	-----------

REIL Rwy 18 and 36 **Ⓛ**  
MIRL Rwy 18-36 **Ⓛ**



CATEGORY	A	B	C	D
LNVA MDA	580-1 520 (600-1)		NA	
CIRCLING	580-1 518 (600-1)	660-1 598 (600-1)	NA	