

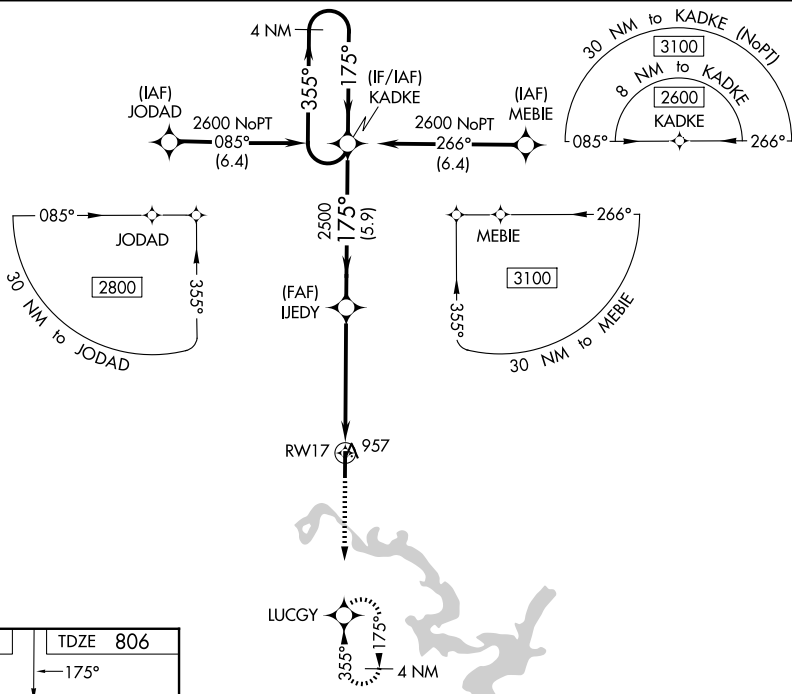
APP CRS <b>175°</b>	Rwy Ldg <b>5020</b>
	TDZE <b>806</b>
	Apt Elev <b>806</b>

# RNAV (GPS) RWY 17

MIAMI RGNL (MIO)

RNP APCH.	ODALS	MISSED APPROACH: Climb to 2500 direct LUCGY and hold.
<p>▼ Baro-VNAV and VDP NA when using Grove altimeter setting.</p> <p>▲ Rwy 17 helicopter visibility reduction below 3/4 SM NA. When local altimeter setting not received, use Grove altimeter setting.</p>		

AWOS-3PT <b>119.675</b>	KANSAS CITY CENTER <b>128.6 282.325</b>	UNICOM <b>122.8 (CTAF) ①</b>
----------------------------	--	---------------------------------



ELEV 806 TDZE 806

175°

5020 X 100

35

REIL Rwy 35 ①  
MIRL Rwy 17-35 ①

4 NM Holding Pattern

VGSI and RNAV glidepath not coincident (VGSI Angle 3.00°/TCH 42).

2500 LUCGY

\* LNAV only

GP 3.00° TCH 31

2600 ← 355° 175° → KADKE

2500 IJEDY

\* 1.5 NM to RWY 17

5.9 NM 3.7 NM 1.5 NM

CATEGORY	A	B	C	D
LNAV/VNAV DA	1206-1 1/8 400 (400-1 1/8)			NA
LNAV MDA	1320-1	514 (600-1)	1320-1 3/8 514 (600-1 3/8)	NA
CIRCLING	1320-1	514 (600-1)	1460-1 3/4 654 (700-1 3/4)	NA

SC-1, 09 JUL 2026 to 06 AUG 2026

SC-1, 09 JUL 2026 to 06 AUG 2026