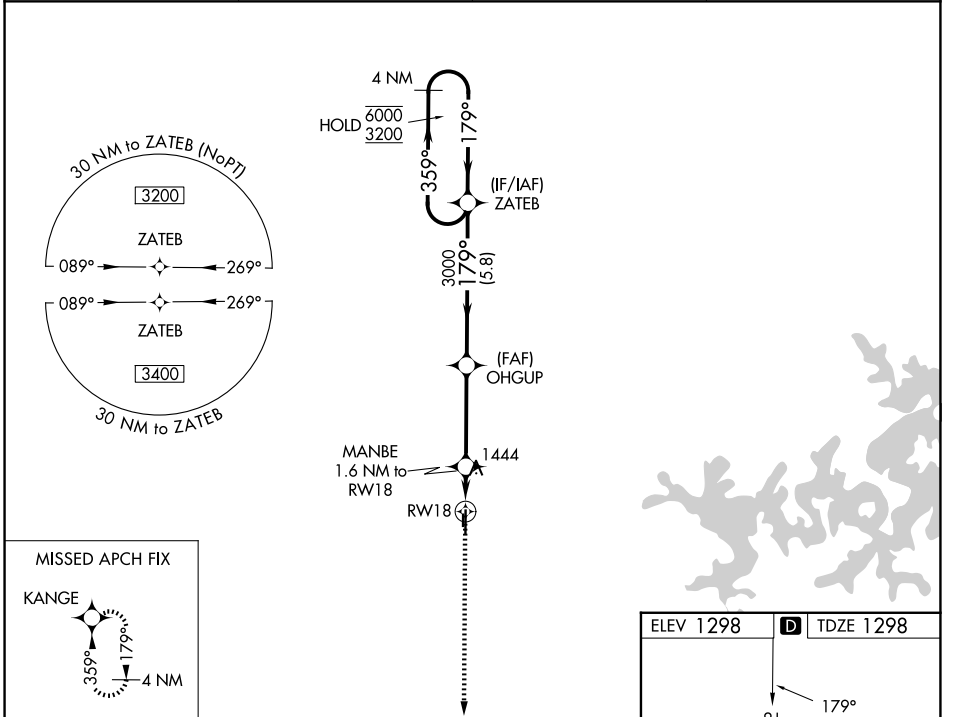


WAAS CH 77830 W18A	APP CRS 179°	Rwy Ldg TDZE Apt Elev	4196 1298 1298
--	------------------------	-----------------------------	---

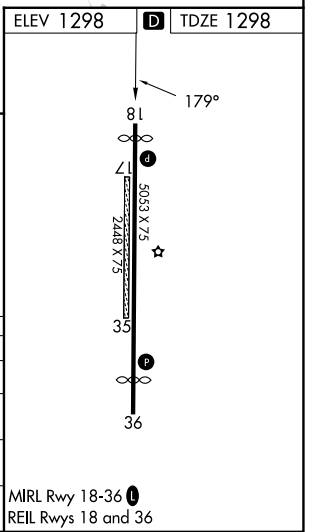
RNAV (GPS) RWY 18

BENTONVILLE MUNI/LOUISE M THADEN FLD (VBT)

RNP APCH.		MISSED APPROACH: Climb to 3400 direct KANGE and hold.	
<p>⚠ Circling NA to Rwy 17 and 35. Rwy 18 helicopter visibility reduction below 3/4 SM NA. For uncompensated Baro-VNAV systems, LNAV/VNAV NA below -17°C or above 54°C.</p>			
AWOS-3PT 134.975	RAZORBACK APP CON ★ 121.0 (WEST) 244.575	CLNC DEL 121.05 263.125	UNICOM 122.975 (CTAF) ①



3400	KANGE				
*LNAV only.	MANBE 1.6 NM to RW18	OHGUP 3000	ZATEB	4 NM Holding Pattern	
RW18	1900*	3000	359° →	6000	← 179°
	1.6 NM	3.6 NM	5.8 NM	GP 3.00° TCH 45	
CATEGORY	A	B	C	D	
LPV DA	1548-1		250 (300-1)		
LNAV/VNAV DA	1688-1 1/8		390 (400-1 1/8)		
LNAV MDA	1700-1 402 (500-1)		1700-1 1/8 402 (500-1 1/8)		
CIRCLING	1780-1 482 (500-1)		1920-1 3/4 622 (700-1 3/4)		1940-2 642 (700-2)



SC-1, 09 JUL 2026 to 06 AUG 2026

SC-1, 09 JUL 2026 to 06 AUG 2026