

LOC/DME I-FKO <b>111.1</b> Chan <b>48</b>	APP CRS <b>152°</b>	Rwy Ldg <b>5100</b> TDZE <b>58</b> Apt Elev <b>58</b>
---	------------------------	---

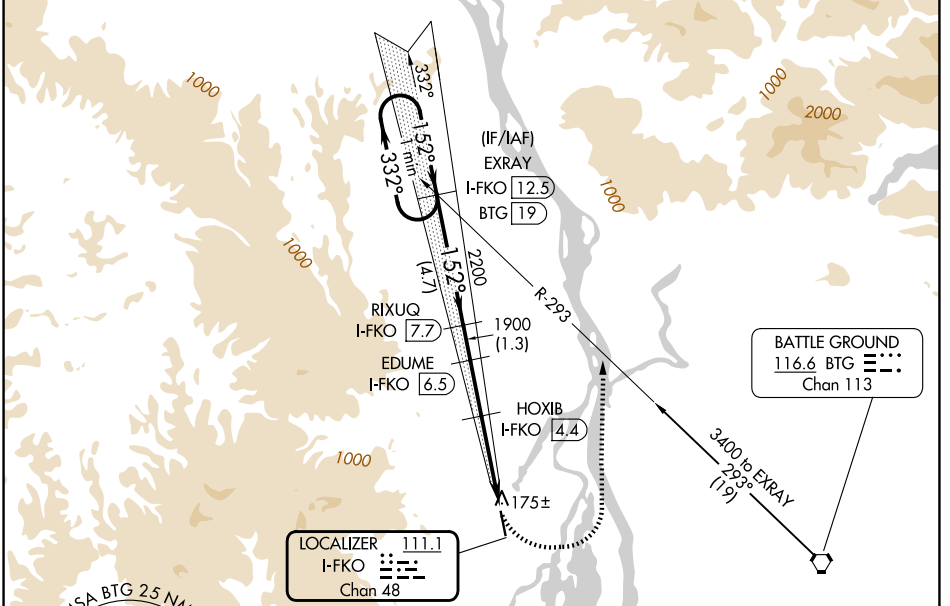
# LOC/DME RWY 15

SCAPPOOSE (SPB)

**⚠** Circling NA west of Rwy 15-33. When local altimeter setting not received, use Portland Intl altimeter setting and increase all MDA 40 feet; increase S-15 Cat C/D visibility and Circling Cat C visibility 1/8 mile, Cat D visibility 1/4 mile. Helicopter visibility reduction below 1 SM NA. Night Landing Rwy 15 NA.

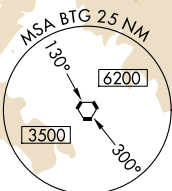
**MISSED APPROACH:** Climbing left turn to 3000 on heading 020° and on BTG VORTAC R-293 to EXRAY/I-FKO 12.5 DME and hold.

ASOS <b>135.875</b>	PORTLAND APP CON <b>124.35 299.2</b>	CLNC DEL <b>121.65</b>	UNICOM <b>122.8 (CTAF) 0</b>
------------------------	---	---------------------------	---------------------------------



NW-1, 09 JUL 2026 to 06 AUG 2026

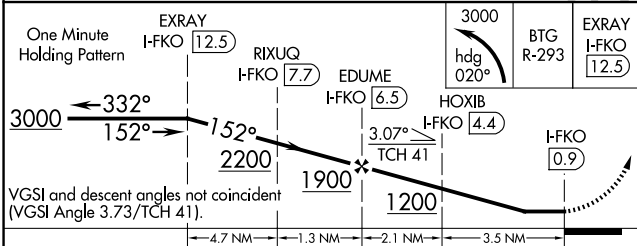
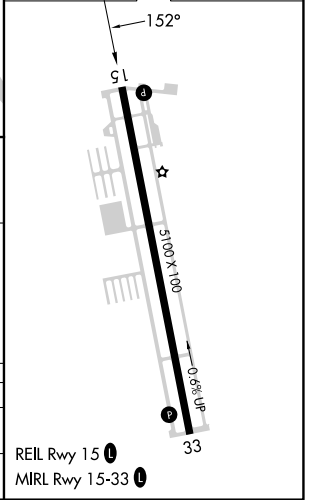
NW-1, 09 JUL 2026 to 06 AUG 2026



**LOCALIZER 111.1**  
I-FKO  
Chan 48

**BATTLE GROUND 116.6 BTG**  
Chan 113

ELEV <b>58</b>	TDZE <b>58</b>
----------------	----------------



CATEGORY	A	B	C	D
S-15	660-1 602 (700-1)		660-1 3/4 602 (700-1 3/4)	
CIRCLING	660-1 602 (700-1)		660-1 3/4 602 (700-1 3/4)	860-2 1/2 802 (900-2 1/2)