

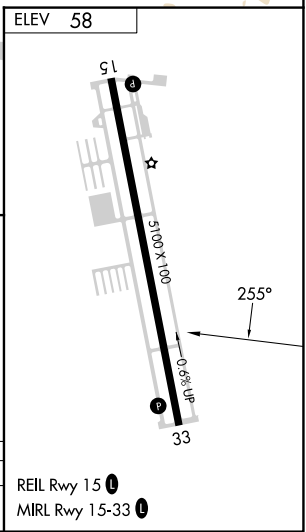
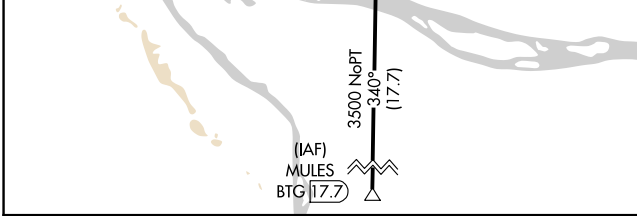
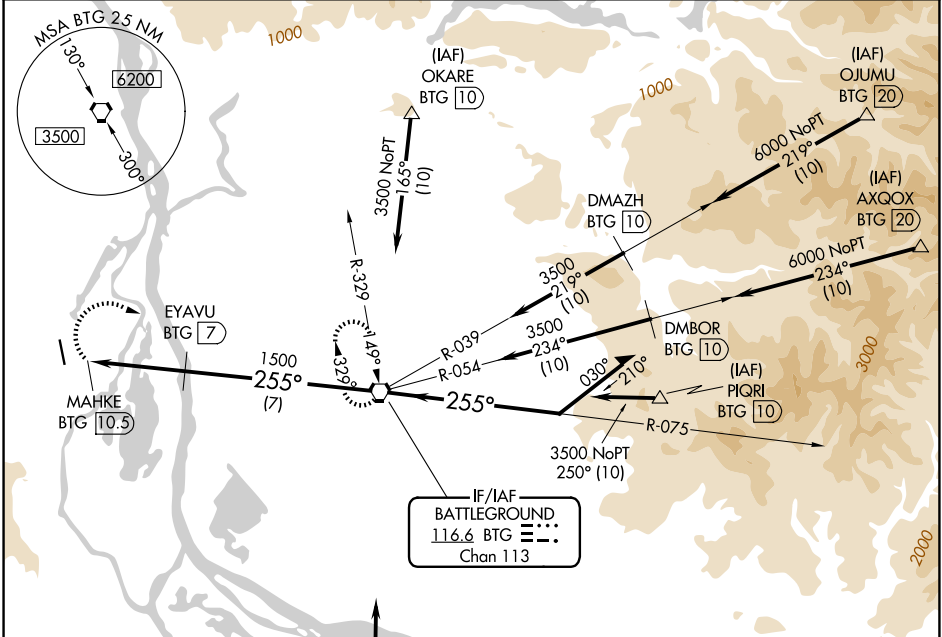
VORTAC BTG 116.6 Chan 113	APP CRS 255°	Rwy Ldg TDZE Apt Elev	N/A N/A 58
---	------------------------	-----------------------------	---------------------------------------

VOR/DME-A SCAPPOOSE (SPB)

⚠ Circling to Rwy 15 NA at night. Circling NA west of Rwy 15-33. When local altimeter setting not received, use Portland Intl altimeter setting; increase all MDAs 40 feet. Increase Circling Cat D visibility ¼ SM.

MISSED APPROACH: Climbing right turn to 4200 direct BTG VORTAC and hold, continue climb-in-hold to 4200.

ASOS 135.875	PORTLAND APP CON 124.35 299.2	CLNC DEL 121.65	UNICOM 122.8 (CTAF) 📞
------------------------	---	---------------------------	--



4200	BTG		
MAHKE BTG 10.5	EYAVU BTG 7	BTG VORTAC	Remain within 10 NM
1500	3500	5600	075°
255°	255°	255°	075°
0.8	3.5 NM	7 NM	

CATEGORY	A	B	C	D
CIRCLING	660-1	602 (700-1)	660-1¾ 602 (700-1¾)	860-2½ 802 (900-2½)

REIL Rwy 15 **📞**
MIRL Rwy 15-33 **📞**

NW-1, 09 JUL 2026 to 06 AUG 2026

NW-1, 09 JUL 2026 to 06 AUG 2026