

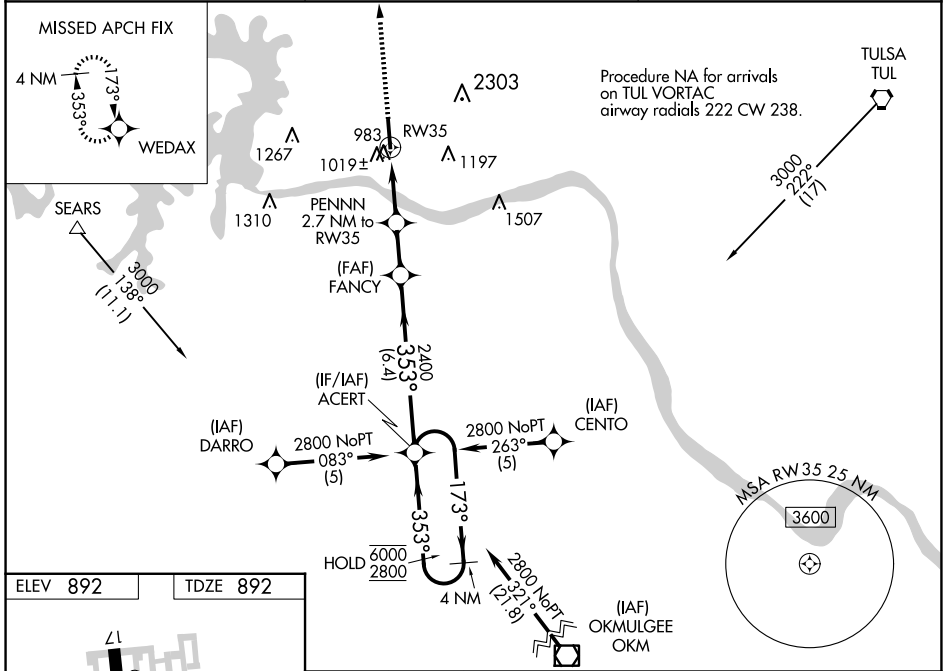
WAAS CH <b>57912</b> <b>W35A</b>	APP CRS <b>353°</b>	Rwy Idg TDZE Apt Elev	<b>5799</b> <b>892</b> <b>892</b>
--	------------------------	-----------------------------	---

# RNAV (GPS) RWY 35

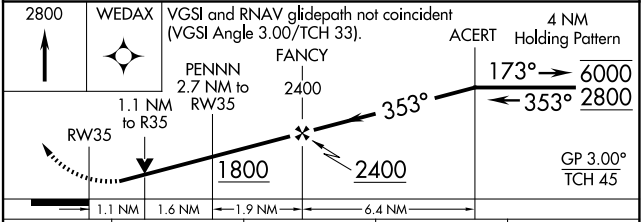
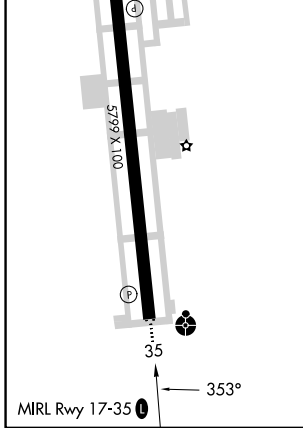
WILLIAM R POGUE MUNI (OWP)

RNP APCH - GPS.	ODALS	MISSED APPROACH: Climb to 2800 direct WEDAX and hold.
<p>▼ Rwy 35 helicopter visibility reduction below 3/4 SM NA. For uncompensated Baro-VNAV systems, LNAV/VNAV NA below -16°C or above 54°C. Circling NA for Cat C east of Rwy 17-35.</p> <p>⚠ Inop table does not apply to LPV all Cats. When local altimeter setting not received, use TUL altimeter setting and increase LPV DA to 1209 feet, increase LNAV/VNAV DA to 1244 feet and all visibilities 1/2 SM. Increase all MDAs 80 feet and LNAV visibility Cat C 1/4 SM. Baro-VNAV and VDP NA when using TUL altimeter setting.</p>		

AWOS-3T <b>118.325</b>	TULSA APP CON <b>124.0 338.3</b>	UNICOM <b>122.7</b> (CTAF) <b>0</b>
---------------------------	-------------------------------------	--



ELEV 892	TDZE 892
----------	----------



CATEGORY	A	B	C	D
LPV DA	1142-3/4	250 (300-3/4)		NA
LNAV/VNAV DA	1177-3/4	285 (300-3/4)		NA
LNAV MDA	1280-3/4	388 (400-3/4)	1280-1 388 (400-1)	NA
CIRCLING	1380-1	488 (500-1)	1400-1 1/2 508 (600-1 1/2)	NA

SC-1, 09 JUL 2026 to 06 AUG 2026

SC-1, 09 JUL 2026 to 06 AUG 2026