

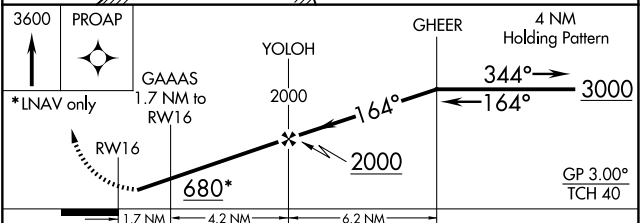
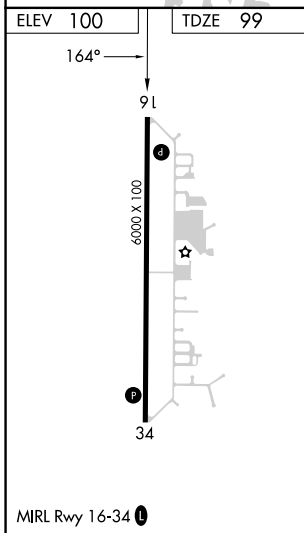
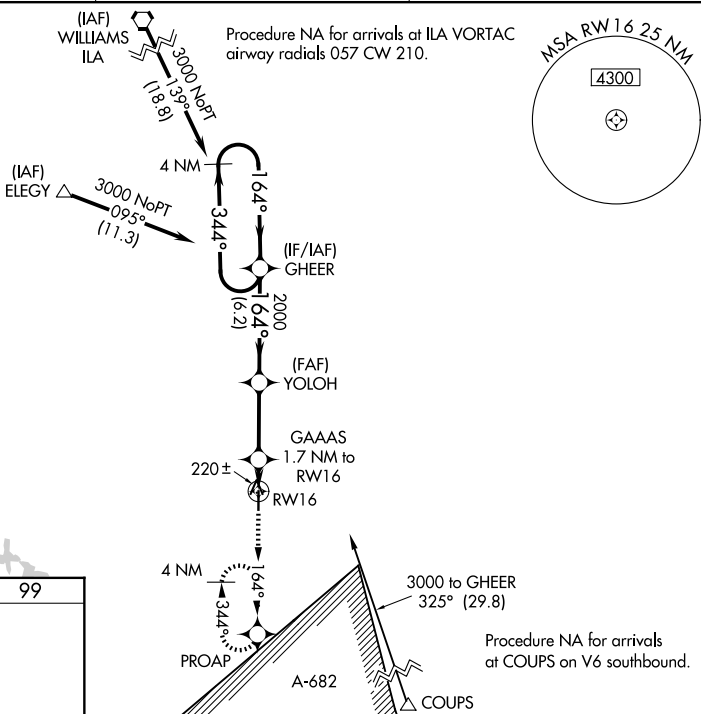
WAAS CH 99719 W16A	APP CRS 164°	Rwy Ldg TDZE Apt Elev	6000 99 100
---------------------------------	------------------------	-----------------------------	--

RNAV (GPS) RWY 16

YOLO COUNTY (DWA)

RNP APCH.	<p>When local altimeter setting not received, use Travis AFB altimeter setting and increase all DA 50 feet and all MDA 60 feet, and increase LNAV/VNAV all Cats and LNAV Cat C and D visibility 1/4 mile. For uncompensated Baro-VNAV systems, LNAV/VNAV NA below -15°C (5°F) or above 43°C (109°F). Baro-VNAV NA when using Travis AFB altimeter setting.</p>	<p>MISSED APPROACH: Climb to 3600 direct PROAP and hold, continue climb-in-hold to 3600.</p>
<p>NA</p>		

AWOS-3P 125.775	TRAVIS APP CON 126.6 281.45	UNICOM 123.0 (CTAF)
---------------------------	---------------------------------------	-------------------------------



CATEGORY	A	B	C	D
LPV DA		360-1	261 (300-1)	
LNAV/VNAV DA		402-1	303 (400-1)	
LNAV MDA	480-1	381 (400-1)	480-1 1/8	381 (400-1 1/8)

SW-2, 09 JUL 2026 to 06 AUG 2026

SW-2, 09 JUL 2026 to 06 AUG 2026