

**CHICAGO/WEST CHICAGO****DUPAGE** (DPA)(KDPA) 29 W UTC-6(-5DT) N41°54.42' W88°14.88'

759 B ARFF Index—See Remarks NOTAM FILE DPA MON Airport

**RWY 02L-20R:** H7571X150 (CONC-GRVD) S-30, D-45 HIRL CL**RWY 02L:** MALS. TDZL. RVR-T**RWY 20R:** PAPI(P4L)—GA 3.0° TCH 40'. RVR-R**RWY 02R-20L:** H6451X100 (CONC-GRVD) S-30, D-45 MIRL**RWY 02R:** Rgt tfc.**RWY 10-28:** H4750X75 (ASPH-GRVD) S-30, D-45 HIRL**RWY 10:** RLIS. REIL. VASI(V4L)—GA 3.0° TCH 50'. Bldg.**RWY 28:** REIL. PAPI(P4L)—GA 3.0° TCH 40'.**RWY 15-33:** H3399X100 (ASPH) S-30, D-45, 2D-100 MIRL**RWY 15:** REIL. PAPI(P4R)—GA 3.9° TCH 42'. Tree.**RWY 33:** REIL. Thld dsplcd 190'. Tree.**SERVICE:** S4 **FUEL** 100LL, JET A **OX** 1, 2, 3, 4 **LGT** ATC—Ctl. Rwy 10 VASI unusbl byd 5° right and left of centerline.**AIRPORT REMARKS:** Attended continuously. Fuel: 100LL self service avbl 24 hrs with credit card. ARFF Index B PPR. Deer, coyote, birds and migratory waterfowl on and infov arpt. Actn on short final to Rwy 15 are not visible from tower due to trees. U.S. Customs user fee arpt.**AIRPORT MANAGER:** 630-584-2211**WEATHER DATA SOURCES:** ASOS (630) 587-3668 LAWRS.**COMMUNICATIONS:** ATIS 132.075 UNICOM 122.95**RCO** 122.3 122.1R 108.4T (KANKAKEE RADIO)Ⓡ **CHICAGO APP/DEP CON** 133.5**TOWER** 120.9 124.5 **GND CON** 121.8 **CLNC DEL** 119.75**AIRSPACE:** CLASS D.**RADIO AIDS TO NAVIGATION:** NOTAM FILE DPA.(L) **VORW/DME** 108.4 DPA Chan 21 N41°53.42' W88°21.01' 076° 4.7 NM to fld. 802/2E.

VOR unusable:

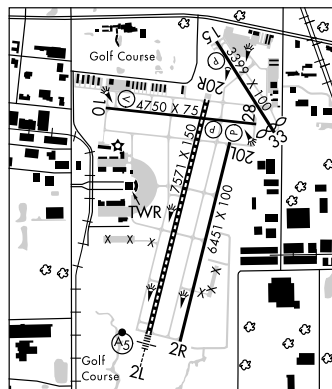
290°-310° byd 35 NM

DME unusable:

290°-340° byd 35 NM

ILS 111.7 I-GVK Rwy 02L. Class IT.

ILS 109.5 I-DPA Rwy 10. Class IB.

**COMM/NAV/WEATHER REMARKS:** Emerg frequency 121.5 not available at twr.**CHICAGO****COPTER**

H-5E, L-28H, A

IAP, AD

**CIVIC MEM** N38°53.54' W90°03.38' NOTAM FILE ALN.**NDB (MHW)** 263 CVM at St Louis Rgnl. 538/1W.**ST LOUIS**

A

**COLES CO MEM** (See MATTOON/CHARLESTON on page 68)**COLUMBIA****SACKMAN FLD** (H49) 2 WNW UTC-6(-5DT) N38°27.14' W90°14.16'

420 NOTAM FILE STL

**RWY 03-21:** 2450X150 (TURF) LIRL(NSTD)**RWY 21:** Rgt tfc.**SERVICE:** LGT For Rwy lgts key 122.9 3 clicks. Lgts go off after 15 min. Rwy 03-21 NSTD LIRL due to uneven spacing and non-frangible mounts.**AIRPORT REMARKS:** Unattended. Admin bldg can be accessed by ciper lock which has applicable instructions. Rwy 03 54' powerline marked with orange balls 1355' from rwy end, 25:1 apch slope. Arpt CLOSED to helicopter ops. Seasonal crops within the primary surface area. Segmented circle and traffic arms are bright orange.**AIRPORT MANAGER:** (314) 434-4615**COMMUNICATIONS:** CTAF 122.9**CLEARANCE DELIVERY PHONE:** For CD ctc St Louis Apch at 314-890-1017.**ST LOUIS**