

GROVE CITY (29D) 3 W UTC-5(-4DT) N41°08.76' W80°10.07'
1370 B NOTAM FILE AOO

DETROIT
L-30H
IAP

RWY 10-28: H4500X75 (ASPH) S-12.5 MIRL 1.6% up W

RWY 10: REIL. PAPI(P2L)—GA 3.8° TCH 37'. Brush.

RWY 28: REIL. PAPI(P2L)—GA 3.0° TCH 56'.

SERVICE: FUEL 100LL, JET A LGT ACTIVATE MIRL Rwy 10-28-CTAF.
Rwy 10 PAPI unusable byd 5' left of rwy centerline. Twy lgts stub to apron.

AIRPORT REMARKS: Attended Mon-Fri 1400-2200Z. Unattended Thanksgiving, Christmas and New Years Day. 24 hr fuel avbl with credit card. Jet-A anti-ice inhibitor avbl on req. Parachute Jumping. Avoid overflying fld during dalgt VFR because of parachute jumping activity northwest corner of fld. Deer and geese on and invof arpt. Drainage ravine 15' deep located in safety area north of Rwy 10. Portable ground power unit avbl.

AIRPORT MANAGER: 724-748-5530

COMMUNICATIONS: CTAF/UNICOM 122.725

ELLWOOD CITY RCO 122.1R 115.8T (ALTOONA RADIO)

Ⓡ YOUNGSTOWN APP/DEP CON 133.95 (1100-0500Z)

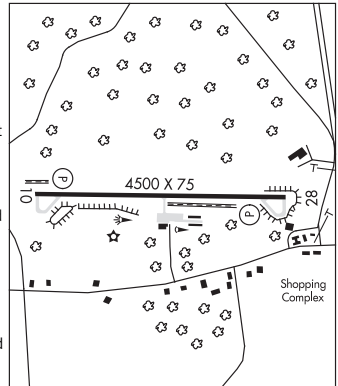
Ⓡ CLEVELAND CENTER APP/DEP CON 120.775 (0500-1100Z) or ctc Cleveland ARTCC at 440-774-0227.

CLEARANCE DELIVERY PHONE: For CD ctc Youngstown Apmh at 330-856-4806, when Apmh clsd ctc Cleveland ARTCC at 440-774-0234.

RADIO AIDS TO NAVIGATION: NOTAM FILE AOO.

ELLWOOD CITY (H) VOR/DME 115.8 EWC Chan 105 N40°49.50' W80°12.69' 014° 19.4 NM to fld. 1227/8W.

VOR unusable:
285°-335°



HARRISBURG

CAPITAL CITY (CXV)(KCXY) 3 SE UTC-5(-4DT) N40°13.03' W76°51.08'
347 B TPA—See Remarks NOTAM FILE CXV

NEW YORK
H-10H, 12I, L-29E, 34G, A
IAP, AD

RWY 08-26: H5000X150 (ASPH-GRVD) S-65, D-105, 2S-133, 2D-185 HIRL

RWY 08: MALSR. PAPI(P4R)—GA 3.0° TCH 55'. RVR-T Tree.

RWY 26: VASI(V4L)—GA 3.1° TCH 56'. Pole. Rgt tfc.

RWY 12-30: H3778X100 (ASPH) S-40, D-65, 2S-82, 2D-115 MIRL 0.3% up SE

RWY 12: REIL. VASI(V4L)—GA 3.9° TCH 49'. Tree. Rgt tfc.

RWY 30: REIL. VASI(V4L)—GA 4.0° TCH 56'. Tree.

LAND AND HOLD—SHORT OPERATIONS

LDG RWY	HOLD—SHORT POINT	AVBL LDG DIST
RWY 26	12-30	3450

SERVICE: S4 FUEL 100LL, JET A LGT When twr clsd ACTIVATE MALSR Rwy 08, HIRL Rwy 08-26, MIRL Rwy 12-30 and twy lgts—CTAF. Rwy 08 PAPI unusbl byd 7° right of course.

AIRPORT REMARKS: Attended 1100-0400Z. PPR for hazardous cargo. Bird flocks on and invof arpt. All rwys for loads over 100,000 lbs prior permission rqr. Arpt CLOSED to FAR PART 121 acft. Active twy prior to Rwy 12 relocated thld, no tkf or ldg on this sfc. High terrain south Rwy 12-30. TPA 1500(1153) conventional.

AIRPORT MANAGER: 717-774-8335

WEATHER DATA SOURCES: ASOS (717) 770-0880 LAWRs.

COMMUNICATIONS: CTAF 119.5 ATIS 134.95 UNICOM 122.95

HARRISBURG RCO 122.2 (WILLIAMSPORT RADIO)

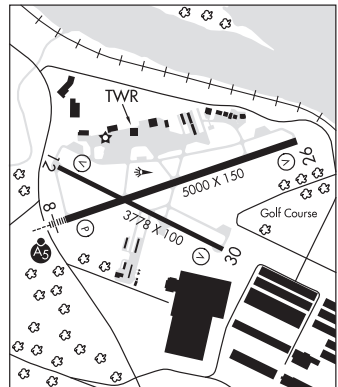
Ⓡ HARRISBURG APP/DEP CON 124.1

TOWNR 119.5 (1200-0200Z) GND CON 121.9 CLNC DEL 124.1 (when twr clsd)

CLEARANCE DELIVERY PHONE: For CD when ATCT clsd ctc Harrisburg Apmh 124.1 or 800-932-0712.

AIRSPACE: CLASS D svc 1200-0200Z; other times CLASS E.

TRSA svc ctc APP CON 20 NM out.



CONTINUED ON NEXT PAGE

PENNSYLVANIA
CONTINUED FROM PRECEDING PAGE

RADIO AIDS TO NAVIGATION: NOTAM FILE LNS.

LANCASTER (T) VORW/DME 117.3 LRP Chan 120 N40°07.20' W76°17.48' 292° 26.4 NM to fld. 399/9W.

VOR unusable:

195°-273° byd 21 NM blo 9,000'

DME unusable:

180°-190°

320°-030° byd 31 NM blo 8,000'

LATLE NDB (LOMW) 219 CX N40°10.69' W77°00.34' 083° 7.5 NM to fld. 505/11W. NOTAM FILE CXY.

ILS 109.1 I-CXY Rwy 08. Class IB. Unmonitored when ATCT closed.

HARRISBURG INTL (MDT)(KMDT) P (ANG) 8 SE UTC-5(-4DT) N40°11.59' W76°45.76'

NEW YORK

310 B TPA—See Remarks LRA Class I, ARFF Index B NOTAM FILE MDT

H-10H, L2, L-29E, 34G, A

RWY 13-31: H10001X200 (ASPH-GRVD) S-155, D-330, 2S-175,

2D-550 PCN 90 F/C/X/T HIRL CL

IAP, AD

RWY 13: ALSF2. TDZL. PAPI(P4L)—GA 3.0° TCH 75'. RVR-TMR Thld dspclcd 993'. Trees.

RWY 31: REIL. PAPI(P4L)—GA 3.0° TCH 51'. RVR-TMR Thld dspclcd 993'. Trees. Rgt tfc.

RUNWAY DECLARED DISTANCE INFORMATION

RWY 13: TORA-10001 TODA-10001 ASDA-9063 LDA-8070

RWY 31: TORA-10001 TODA-10001 ASDA-9122 LDA-8129

SERVICE: S4 FUEL 100LL, JET A OX 1, 2, 4 **MILITARY—FUEL A, A+** (C717-944-4666) (NC-100LL) **FLUID LOX OIL O-128(Mil)**

AIRPORT REMARKS: Attended continuously. Bird flocks on and invof arprt.

East apron clsd to tran acft without prior permission, call arprt manager 717-948-3919. No touch and go ldgs 0400-1100Z†.

TPA-1300(990) props, 1800(1490) jets. Cargo apron parking spot 9 clsd to acft with a wingspan of more than 52'. Ldg fee. Flight Notification Service (ADCUS) avbl.

AIRPORT MANAGER: 717-948-3900

WEATHER DATA SOURCES: ASOS 118.8 (717) 944-1372. WSP.

COMMUNICATIONS: ATIS 118.8

Ⓡ **HARRISBURG APP/DEP CON** 118.25 (310°-079°) 124.1 (180°-309°) 126.45 (080°-179°)

HARRISBURG INTL TOWER 124.8 **GND CON** 121.7

AIRSPACE: CLASS D.

TRSA svc ctc Apch Ctl 20 NM out

VOR TEST FACILITY (VOT) 110.0

RADIO AIDS TO NAVIGATION: NOTAM FILE LNS.

LANCASTER (T) VORW/DME 117.3 LRP Chan 120 N40°07.20' W76°17.48' 291° 22.1 NM to fld. 399/9W.

VOR unusable:

195°-273° byd 21 NM blo 9,000'

DME unusable:

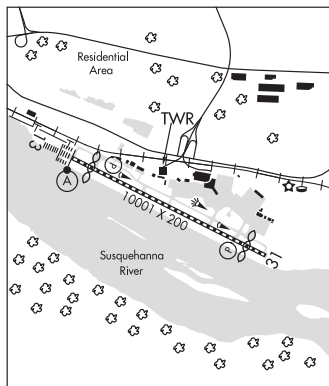
180°-190°

320°-030° byd 31 NM blo 8,000'

ENOLA NDB (LOMW) 204 MD N40°14.78' W76°54.04' 128° 7.1 NM to fld. 461/11W. NOTAM FILE MDT.

ILS 110.9 I-MDT Rwy 13. Class IIIE. LOM ENOLA NDB. LOC unusable above 1,800' at thld; above 4,800' byd OM (6.4 NM).

ILS 110.9 I-HQA Rwy 31. Class IB. Unmonitored when ATCT clsd.



HARRISBURG N40°18.13' W77°04.17' NOTAM FILE CXY.

DETROIT

(L) **VORTACW** 112.5 HAR Chan 72 225° 8.4 NM to Carlisle. 1301/10W.

H-10H, L-29E, A

VOR unusable:

097°-107° byd 10 NM

146°-168° byd 20 NM blo 7,000'

RCO 122.2 (WILLIAMSPORT RADIO)