

**ORLANDO INTL** (MCO)(KMCO) P (AF) 6 SE UTC-5(-4DT) N28°25.76' W81°18.54'

**JACKSONVILLE**  
H-8H, L-21D, 24F  
IAP, AD

96 B LRA Class I, ARFF Index E NOTAM FILE MCO

**RWY 18L-36R:** H12005X200 (ASPH-CONC-GRVD) S-165,  
D-200, 2S-175, 2D-400 PCN 97 R/B/W/T HIRL CL

**RWY 18L:** PAPI(P4L)—GA 3.0° TCH 71'. RVR-TMR

**RWY 36R:** ALSF2. TDZL. PAPI(P4L)—GA 3.0° TCH 70'.  
RVR-TMR

**RWY 18R-36L:** H12004X200 (ASPH-CONC-GRVD) S-100,  
D-200, 2S-175, 2D-400 PCN 104R/B/W/T HIRL CL

**RWY 18R:** MALSR. TDZL. PAPI(P4L)—GA 3.0° TCH 71'.  
RVR-TMR

**RWY 36L:** REIL. PAPI(P4L)—GA 3.0° TCH 69'. RVR-TMR

**RWY 17R-35L:** H10000X150 (CONC-GRVD) S-75, D-210,  
2S-175, 2D-400 PCN 106R/B/W/T HIRL CL

**RWY 17R:** ALSF2. TDZL. PAPI(P4L)—GA 3.0° TCH 71'.  
RVR-TMR

**RWY 35L:** ALSF2. TDZL. PAPI(P4R)—GA 3.0° TCH 72'.  
RVR-TMR

**RWY 17L-35R:** H9001X150 (CONC-GRVD) S-75, D-210,  
2D-420, 2D/2D2-900 PCN 116R/B/W/T HIRL CL

**RWY 17L:** ALSF2. TDZL. PAPI(P4L)—GA 3.0° TCH 72'.  
RVR-TMR

**RWY 35R:** ALSF2. TDZL. PAPI(P4R)—GA 3.0° TCH 73'.  
RVR-TMR

**RWY 17L-35R:** H9001X150 (CONC-GRVD) S-75, D-210,  
2D-420, 2D/2D2-900 PCN 116R/B/W/T HIRL CL

**RWY 17L:** ALSF2. TDZL. PAPI(P4L)—GA 3.0° TCH 72'.  
RVR-TMR

**RWY 35R:** ALSF2. TDZL. PAPI(P4R)—GA 3.0° TCH 73'.  
RVR-TMR

**RWY 17L-35R:** H9001X150 (CONC-GRVD) S-75, D-210,  
2D-420, 2D/2D2-900 PCN 116R/B/W/T HIRL CL

**RWY 17L:** ALSF2. TDZL. PAPI(P4L)—GA 3.0° TCH 72'.  
RVR-TMR

**RWY 35R:** ALSF2. TDZL. PAPI(P4R)—GA 3.0° TCH 73'.  
RVR-TMR

**RWY 17L-35R:** H9001X150 (CONC-GRVD) S-75, D-210,  
2D-420, 2D/2D2-900 PCN 116R/B/W/T HIRL CL

**RWY 17L:** ALSF2. TDZL. PAPI(P4L)—GA 3.0° TCH 72'.  
RVR-TMR

**RWY 35R:** ALSF2. TDZL. PAPI(P4R)—GA 3.0° TCH 73'.  
RVR-TMR

#### RUNWAY DECLARED DISTANCE INFORMATION

**RWY 17L:**TORA-9000 TODA-9000 ASDA-9000 LDA-9000

**RWY 17R:**TORA-10000 TODA-10000 ASDA-10000 LDA-10000

**RWY 18L:**TORA-12005 TODA-12005 ASDA-12005 LDA-12005

**RWY 18R:**TORA-12004 TODA-12004 ASDA-12004 LDA-12004

**RWY 35L:**TORA-10000 TODA-10000 ASDA-10000 LDA-10000

**RWY 35R:**TORA-9000 TODA-9000 ASDA-9000 LDA-9000

**RWY 36L:**TORA-12004 TODA-12004 ASDA-11621 LDA-11621

**RWY 36R:**TORA-12005 TODA-12005 ASDA-11601 LDA-11601

**SERVICE:** S2 FUEL 100LL, JET A LGT Rwy 17L-35R TDZL unlit 0400-1100Z†. **MILITARY—FUEL A, A+**  
(C407-851-8304.) (NC-100LL)

**AIRPORT REMARKS:** Attended continuously. CAUTION Birds and deer on and in/ovf arpt. Use caution in/ovf Twy A along west ramp. Rwy 18L-36R ctr 75' keel section of rwy conc full length, ctr 100' keel section of rwy conc first 1000', both ends. Rest of rwy width is asph. Rwy 18R-36L ctr 87' keel section of rwy conc full length, rest of rwy width is asph. Last 3000' of Rwy 18R is conc full width. ASDE-X in use. Operate transponders with altitude reporting mode and ADS-B (if equipped) enabled on all airport surfaces. Unless advised by ATIS, dep flts on initial ctc with GND CON, acft on West ramp, Airside 1 and 3 (Gates 1-59) use GND CON 121.8. Acft at Airside 2 and 4 (Gates 60 and higher), use GND CON 126.4. When ORL ILS Rwy 07 and MCO ILS Rwy 17 and 18R simultaneous ops are conducted, ATC radar rqrd. Bright lgts on road btn Rwy 17R-35L and Rwy 17L-35R may be mistaken for rwy lgts. Acft with wingspan greater than 214' must adhere to specific rwy and taxi rts. Ctc afd ops at 407-825-2036 for details. Rwy status lgts are in opr. Avoid ctc with twy edge lgts, all acft determined to be FAA Design Group IV and abv must perform judgmental oversteering instead of cockpit cntrln steering when taxiing. Twy J3 and Twy J4 rstd to wingspan of less than 118'. Twy A, south of Twy A3, rstd to wingspan of less than 118'. PPR rqrd for wingspan 118' or greater. West ramp customs inspection parking area rstd to acft wingspan less than 118'. Twy A, btn W ramp S end and Twy B10, rstd to acft wingspan less than 171'. PPR for acft wingspan 171' or greater. Flight Notification Service (ADCUS) avbl.

**AIRPORT MANAGER:** 407-825-7445

**WEATHER DATA SOURCES:** ASOS (407) 855-5235 LLWAS. TDWR.

**COMMUNICATIONS:** D-ATIS ARR 121.25 D-ATIS DEP 120.525 UNICOM 122.95

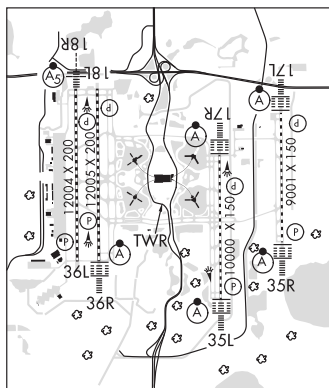
Ⓡ **ORLANDO APP/DEP CON** 119.4 (181°-310° 5500' and blo) 119.4 (061°-180° 4500' and blo) 135.3 (311°-060° 5500' and blo) 120.15 (181°-359° abv 5500') 124.8 (000°-180° abv 5000')

**TOWER** 124.3 (Rwy 18L-36R; Rwy 18R-36L) 118.45 (Rwy 17L-35R; Rwy 17R-35L)

**GND CON** 121.8 (West) 126.4 (East) **CLNC DEL** 134.7

**CPDLC** (LOGON KUSA) **AR OPS** 41.5 148.8

**AIRSPACE:** CLASS B See VFR Terminal Area Chart.



CONTINUED ON NEXT PAGE

CONTINUED FROM PRECEDING PAGE

RADIO AIDS TO NAVIGATION: NOTAM FILE ORL.

(H) VORTACW 112.2 ORL Chan 59 N28°32.56' W81°20.10' 169° 6.9 NM to fld. 102/OE.

TACAN AZIMUTH unusable:

066°-084°

246°-289° byd 17 NM blo 2,000'

246°-289° byd 28 NM blo 2,500'

ILS/DME 110.95 I-ARK Chan 46(Y) Rwy 17L. Class IIIE.

ILS/DME 111.75 I-DIZ Chan 54(Y) Rwy 17R. Class IIIE.

ILS/DME 111.9 I-TFE Chan 56 Rwy 18R. Class IA.

ILS/DME 110.5 I-DDO Chan 42 Rwy 35L. Class IIIE.

ILS/DME 111.15 I-CER Chan 48(Y) Rwy 35R. Class IIIE.

ILS/DME 110.7 I-OJP Chan 44 Rwy 36R. Class IIIE.

**ORLANDO SANFORD INTL.** (SFB)(KSFB) 16 NE UTC-5(-4DT) N28°46.63' W81°14.09'

**JACKSONVILLE**

55 B AOE ARFF Index—See Remarks NOTAM FILE SFB

**H-8H, L-21D, 24F**

**RWY 09L-27R:** H11002X150 (ASPH-GRVD) S-100, D-279, 2D-840

**IAP AD**

PCN 67 F/B/X/T HIRL

**RWY 09L:** MALSR. PAPI(P4L)—GA 3.0° TCH 71'. Thld dspcd 1000'.

**RWY 27R:** MALSR. PAPI(P4R)—GA 3.0° TCH 72'. Rgt tfc. 0.4% up.

**RWY 18-36:** H6002X150 (ASPH-CONC-GRVD) S-111, D-183,

2D-599 PCN 23 F/C/X/T MIRL

**RWY 18:** REIL. PAPI(P4L)—GA 3.0° TCH 48'.

**RWY 36:** REIL. PAPI(P4L)—GA 3.0° TCH 45'. Trees. Rgt tfc.

**RWY 09R-27L:** H5839X75 (ASPH) S-67, D-80 PCN 10 F/C/X/T

HIRL 0.4% up W

**RWY 09R:** MALSR. PAPI(P4L)—GA 3.0° TCH 44'. Thld dspcd 839'.

Rgt tfc.

**RWY 27L:** REIL. PAPI(P4L)—GA 3.0° TCH 47'.

**RWY 09C-27C:** H3578X75 (ASPH) S-12 PCN 69 F/A/X/T MIRL

**RWY 09C:** REIL. PAPI(P2L)—GA 4.0° TCH 35'. Pole. Rgt tfc.

**RWY 27C:** PAPI(P2L)—GA 3.0° TCH 27'. Trees.

**LAND AND HOLD—SHORT OPERATIONS**

LDG RWY	HOLD—SHORT POINT	AVBL LDG DIST
RWY 09C	18-36	3150
RWY 09L	18-36	5500
RWY 18	09R-27L	4600
RWY 36	09L-27R	5170

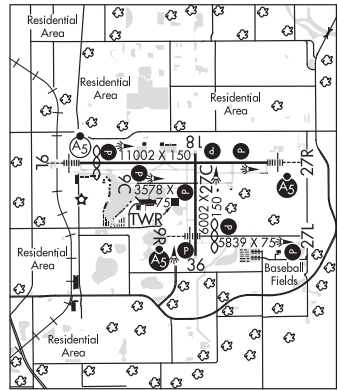
**RUNWAY DECLARED DISTANCE INFORMATION**

<b>RWY 09C:</b> TORA-3578 TODA-3578 ASDA-3578 LDA-3578
<b>RWY 09L:</b> TORA-11002 TODA-11002 ASDA-11002 LDA-10002
<b>RWY 09R:</b> TORA-5839 TODA-5839 ASDA-5839 LDA-5000
<b>RWY 18:</b> TORA-6002 TODA-6002 ASDA-5956 LDA-5956
<b>RWY 27C:</b> TORA-3578 TODA-3578 ASDA-3578 LDA-3578
<b>RWY 27L:</b> TORA-5839 TODA-5839 ASDA-6264 LDA-5839
<b>RWY 27R:</b> TORA-11002 TODA-11002 ASDA-11002 LDA-11002
<b>RWY 36:</b> TORA-6002 TODA-6002 ASDA-6002 LDA-6002

**SERVICE:** S4 FUEL 100LL, JET A OX 3 LGT When ATCT clsd ACTVT MALSR Rwy 09R and Rwy 27R; PAPI Rwys 09L, 27R, 09C, 27C, 09R, 27L, 18, and 36; HIRL Rwy 09L-27R and Rwy 09R-27L; MIRL Rwy 18-36 and Rwy 09C-27C—CTAF.

**AIRPORT REMARKS:** Attended continuously. Class I, ARFF Index D. CLOSED to repetitive air carrier trng ops exc 24 hrs PPR ctc arpt mgr 407-585-4000 extn 4006 or 407-585-4119. ARFF Index E avbl with 24 hr PPR (charter carriers on published schedule exempt). Rwy 09R-Rwy 27L CLOSED to air carrier acft. Rwy 09C-27C non-air carrier use only. Rwy 18-36 and Rwy 09L-27R primary rwys for air carrier ops. Twy K1 clsd to acft with wingspan greater than 80'. Rwy 18-36 ctr 75' width of rwy pavement good cond, outer edges fair cond. Tbjts use FAA dsnt noise abatement dep profile (or acr opns specs) or NBAA dep profile. Pilots are reqd to manage visual apchs so as to dla extn of ldg gear til oprly nec. Dense flt trng act in tfc pat and lcl area, Rwy 09R-27L primary flt trng rwy. Large birds, including eagles invof arpt. All acft with less than 30 seats arr to clear cstm3 ctc 129.075 prior to ldg. PAEW on terminal ramp within 75' of Twy C cntrln when acft using gates 3 or 4. Twy P clsd to acft with wingspan greater than 40'. Twy K clsd to acft with wingspan greater than 80'. Due to facility constraints that limit ability to accommodate diverted flights acft operators to ctc the arpt at 407-585-4101 for prior coordination, except in case of a declared in-flight emergency. NOTE: See Special Notices—Terminal Area Graphic Notice.

**AIRPORT MANAGER:** 407-585-4002



CONTINUED ON NEXT PAGE