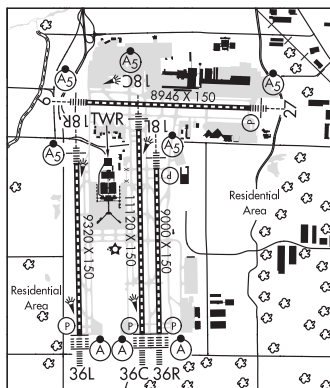


**MEMPHIS INTL** (MEM)(KMEM) P (ANG) 3 S UTC-6(-5DT) N35°02.54' W89°58.60'

**MEMPHIS**  
H-6J, L-18G  
IAP, AD

341 B LRA ARFF Index—See Remarks NOTAM FILE MEM  
**RWY 18C-36C:** H11120X150 (CONC-GRVD) S-125, D-210, 2S-175, 2D-458, 2D/2D2-873 PCN 82 R/C/W/T HIRL CL  
**RWY 18C:** MALSR. TDZL. RVR-TMR Pole. 0.7% up.  
**RWY 36C:** ALSF2. TDZL. PAPI(P4L)—GA 3.0° TCH 71'. RVR-TMR Tree. Rgt tfc. 0.6% down.  
**RWY 18R-36L:** H9320X150 (CONC-GRVD) S-125, D-210, 2S-175, 2D-458, 2D/2D2-873 PCN 82 R/C/W/T HIRL CL  
**RWY 18R:** MALSR. TDZL. RVR-TMR Rgt tfc.  
**RWY 36L:** ALSF2. TDZL. PAPI(P4L)—GA 3.0° TCH 73'. RVR-TMR Road. 0.5% down.  
**RWY 18L-36R:** H9000X150 (CONC-GRVD) S-125, D-210, 2S-175, 2D-458, 2D/2D2-873 PCN 82 R/C/W/T HIRL CL  
**RWY 18L:** MALSR. TDZL. PAPI(P4L)—GA 3.0° TCH 73'. RVR-TMR 0.8% up.  
**RWY 36R:** ALSF2. TDZL. PAPI(P4R)—GA 3.0° TCH 69'. RVR-TMR Trees. 0.5% down.  
**RWY 09-27:** H8946X150 (CONC-GRVD) S-125, D-178, 2S-175, 2D-602, 2D/2D2-870 PCN 92 R/B/W/T HIRL CL  
**RWY 09:** MALSR. RVR-TR Pole. 0.3% up.  
**RWY 27:** MALSR. PAPI(P4L)—GA 3.0° TCH 69'. RVR-TR Pole. 0.6% down.



#### LAND AND HOLD—SHORT OPERATIONS

LDG RWY	HOLD—SHORT POINT	AVBL LDG DIST
RWY 27	TWY N	8450

#### RUNWAY DECLARED DISTANCE INFORMATION

<b>RWY 09:</b> TORA-8946 TODA-8946 ASDA-8946 LDA-8946
<b>RWY 18C:</b> TORA-11120 TODA-11120 ASDA-11120 LDA-11120
<b>RWY 18L:</b> TORA-9000 TODA-9000 ASDA-9000 LDA-9000
<b>RWY 18R:</b> TORA-9320 TODA-9320 ASDA-9320 LDA-9320
<b>RWY 27:</b> TORA-8946 TODA-8946 ASDA-8946 LDA-8946
<b>RWY 36C:</b> TORA-11120 TODA-11120 ASDA-10715 LDA-10715
<b>RWY 36L:</b> TORA-9320 TODA-9320 ASDA-9320 LDA-9320
<b>RWY 36R:</b> TORA-9000 TODA-9000 ASDA-9000 LDA-9000

#### ARRESTING GEAR/SYSTEM

**RWY 18R:** EMAS

**SERVICE:** S4 **FUEL** 100LL, JET A, A+, A++ **OX** 1, 2 **LGT** Rwy 36R ALSF-2 also opr as SSALR. Rwy 36R ALSF2 unmonitored. **MILITARY—A-GEAR** Rwy 18R EMAS 316 x 178. **JASU** 1(MD-3) 5(MD-3M) 1(MA-1A) 2(MC-2A) 2(A-7) **FUEL** A, A+ (C901-345-2992) A++ (Mil) (ANG PPR DSN 726-7131, C901-291-7131. Copter refuel is 2 nozzle.) (NC-100LL) **FLUID** SP PRESAIR LOX **OIL** O-156(Mil)

**AIRPORT REMARKS:** Attended continuously. Class I, ARFF Index C. Index D ARFF eqpt avbl 24 hrs per day, 7 days per wk.

ASDE-X in use. Operate transponders with altitude reporting mode and ADS-B (if equipped) enabled on all airport surfaces. If possible all acft conduct gnd ops with transponders on. NS ABTMT procedures in effect. Successive and/or simultaneous departures apvd on Rwy 36L-18R and Rwy 36C-18C or Rwy 36L-18R and Rwy 36R-18L with course divergence no later than 2.27 NM from rwy end. Extv const on arpt. Large flocks of birds invof arpt. Read back all hold short instr req. Single belly twin tandem ldg gear max wt 621,000 lbs. PPR for taxi clnc on Twy N north of Twy V, Twy S north of Twy V and Twy C north of Twy V ctc Federal Express Ramp Twr on freq 131.5. PPR for taxi clnc from north and south cargo ramp parking on freq 121.9. Helicopter ops prohibited to/from terminal bldg. Twy N north of Twy V, Twy C north of Twy V and Twy S north of Twy V designated as non-movement areas. Twy P1 is designated as a non-movement area. Twy P2 in a non-movement area indef. Large and heavy eastbound acft on Twy V for Rwy 27 hold short at minimum thrust area sign. Acft with wingspans greater than 171' 6" rstd fm taxi on Twy N btn Twy M7 and Twy T. Acft with wingspans greater than 118' restricted from taxiing on Twy J north of Twy C3. Twy V btn Spot 7W and AER 27 rstd to acft with wingspans of 171' 6" or less. Twy V btn Twy S and Twy Y rstd to acft with tail hgt less than 65' 10". Twy N btn AER 09 and Taxilane N clsd to acft wingspan more than 171' indef. Twy P1 btn Twy T and terminal ramp clsd indef. Twy P2 btn Twy T and terminal ramp clsd indef. Flight Notification Svc (ADCUS) avbl. NOTE: See Special Notices—Noise Abatement Procedures and Continuous Power Facilities.

CONTINUED ON NEXT PAGE

CONTINUED FROM PRECEDING PAGE

**MILITARY REMARKS:** ANG PPR 24 hr prior notice rqr, ltd to official business only. PPR DSN 726-7131/7505, C901-291-7131/7505. MIL Ramp OPS 1230-0430Z† Mon-Fri, CLOSED altn Mon and HOL due altn work SKED. MIL Ramp CLOSED outside of publ HR without OG/CC apvl DSN 726-7557, C901-291-7557. MIL ramp OPS at reduced ARFF, downgraded to yellow. Tran acct maint not avbl. Refuel svc for other than C17 acct rqr qualified crew chief or crew members. Non C17 acct support provided by contract FBO on fld. Security avbl 24 hr, DSN 726-7101 or C901-291-7101. COMD POST DSN 726-7148/7311/7312, C901-291-7148/7311/7312. Opr 1230-0430Z† Mon-Fri, clsd alternate Mon and hol due to alternate work sked. Afld mgr does not issue or store COMSEC for tran crews. Tmpry storage of classified materials due to TOP SECRET at Comd Post. BASH Phase II Apr-May and Aug-Oct; current Bird Watch cond are not rpt on ATIS. ATIS info reports bird activity H24 in area.

**AIRPORT MANAGER:** 901-922-8000

**WEATHER DATA SOURCES:** ASOS 127.75 (901) 842-8483. TDWR.

**COMMUNICATIONS:** D-ATIS 127.75 UNICOM 122.95

RCO 122.2 (JACKSON RADIO)

Ⓡ APP CON 119.1 (176°-355°) 125.8 (356°-175°)

TOWER 118.3 (Rwy 09-27) 119.7 (Rwy 18C-36C, Rwy 18L-36R) 128.425 (Rwy 18R-36L)

GND CON 121.0 (Rwy 09-27) 121.65 (Rwy 18R-36L) 121.9 (Rwy 18C-36C, Rwy 18L-36R) CLNC DEL 125.2

Ⓡ DEP CON 124.15 (356°-175°) 124.65 (176°-355°)

CPDLC (LOGON KUSA)

**AIRSPACE:** CLASS B See VFR Terminal Area Chart.

**VOR TEST FACILITY (VOT)** 111.0

**RADIO AIDS TO NAVIGATION:** NOTAM FILE MEM.

(H) VORTACW 117.5 MEM Chan 122 N35°00.91' W89°58.99' 010° 1.7 NM to fld. 363/1E.

ILS 109.5 I-MEM Rwy 09. Class IB. LOC unusable byd 20° right and 25° left of course.

ILS 111.95 I-SDU Rwy 18C. Class IE.

ILS/DME 111.15 I-EXS Chan 48(Y) Rwy 18L. Class ID.

ILS 109.9 I-OOI Rwy 18R. Class IA.

ILS 108.7 I-JIM Rwy 27. Class IA. Glideslope unusable byd 9 NM.

ILS/DME 110.5 I-TSE Chan 42 Rwy 36C. Class IIIE. LOC unusable byd 20° left and 20° right of course. Due to multiple clearance unlocks.

ILS/DME 108.9 I-OHN Chan 26 Rwy 36L. Class IIIE.

ILS/DME 111.35 I-MYO Chan 50(Y) Rwy 36R. Class IIIE.

**COMM/NAV/WEATHER REMARKS:** VOR Test Facility (VOT) unreliable.

**MERSY** N35°30.95' W88°57.42'

MEMPHIS

NDB (MHW) 394 MKL 023° 5.4 NM to Mc Kellar-Sipes Rgnl. 784/1W.

**MILLINGTON**

**CHARLES W BAKER** (2M8) 4 SW UTC-6(-5DT) N35°16.71' W89°55.98'

MEMPHIS

247 B NOTAM FILE MKL

L-16H

RWY 18-36: H3499X74 (ASPH) S-25 MIRL

IAP

RWY 18: REIL. PAPI(P2L)—GA 4.0° TCH 40'. Tree.

RWY 36: REIL. PAPI(P2L)—GA 4.0° TCH 40'. Tower. Rgt tfc.

RWY 18U-36U: H1600X75 (ASPH) S-4

RWY 18U: Tree.

RWY 36U: Trees.

**SERVICE:** FUEL 100LL, JET A+

**AIRPORT REMARKS:** Attended Mon-Fri 1300-2100Z†. Unattended Thanksgiving and Christmas. Attended 8:00 am to 4:30 pm all federal holidays. Fixed-wing tkt/lgd prohibited from/to grass areas. Rwy 18U-36U clsd perm.

**AIRPORT MANAGER:** 901-358-0028

**WEATHER DATA SOURCES:** AWOS-A 122.8 (901) 873-0903.

**COMMUNICATIONS:** CTAF/UNICOM 122.8

Ⓡ MEMPHIS APP CON 125.8

Ⓡ MEMPHIS DEP CON 124.15

**CLEARANCE DELIVERY PHONE:** For CD ctc Memphis Apch at 901-842-8457.

**RADIO AIDS TO NAVIGATION:** NOTAM FILE MEM.

MEMPHIS (H) VORTACW 117.5 MEM Chan 122 N35°00.91' W89°58.99' 008° 16.0 NM to fld. 363/1E.