

MONTROSE RGNL (MTJ)(KMTJ) 1 NW UTC-7(-6DT) N38°30.59' W107°53.66'

5759 B Class I, ARFF Index B NOTAM FILE MTJ

RWY 17-35: H10000X150 (ASPH-GRVD) S-75, D-190, 2D-265

PCN 61 F/C/X/T HIRL

RWY 17: MALSR. PAPI(P4L)—GA 3.0° TCH 55'. 0.5% up.**RWY 35:** REIL. PAPI(P4L)—GA 3.0° TCH 41'. 0.3% down.**RWY 13-31:** H7510X100 (ASPH-GRVD) S-65, D-90, 2D-150

PCN 13 F/D/X/T HIRL 0.8 % up SE

RWY 13: REIL. VASI(V4L)—GA 3.0° TCH 43'. Tree.**RWY 31:** REIL. VASI(V4L)—GA 3.0° TCH 43'.**RUNWAY DECLARED DISTANCE INFORMATION****RWY 13:** TORA-7510 TODA-7510 ASDA-7510 LDA-7510**RWY 17:** TORA-10000 TODA-10000 ASDA-10000 LDA-10000**RWY 31:** TORA-7510 TODA-7510 ASDA-7510 LDA-7510**RWY 35:** TORA-10000 TODA-10000 ASDA-10000 LDA-10000**SERVICE:** S4 FUEL 100LL, JET A+ OX 1, 3 LGT ACTIVATE HIRL Rwy 17-35 and Rwy 13-31, MALSR Rwy 17, and REIL Rwy 13, Rwy 31 and Rwy 35-CTAF.**AIRPORT REMARKS:** Attended Apr 1-Dec 15 1230-0400Z†, Dec 16-Mar 31 1200-0400Z†. Migratory birds and wildlife on and in/ov arpt. Unscheduled air carrier ops with more than 30 pax seats rqr 24 hr PPR call arpt mgr 970-249-3433. Air carrier acft reqd to access terminal ramp via Twy C, outbd tfc Twy D. Ramp connector adjacent to T hangar row clsd indef. Twy E, E6 clsd exc acft with wingspan less than 78'. Twy B ltd to single wheel acft max 80,000 lbs, double wheel acft max 105,000 lbs, and double tandem acft max 170,000 lbs. Preferred tkf Rwy 31 and Rwy 35 and ldg Rwy 13 and Rwy 17. Rwy 17-35 preferred rwy for acft with apch speed greater than 121 kts.**AIRPORT MANAGER:** 970-249-3433**WEATHER DATA SOURCES:** ASOS 135.225 (970) 249-1534.**COMMUNICATIONS:** CTAF/UNICOM 122.8

RCO 122.65 (DENVER RADIO)

Ⓡ DENVER CENTER APP/DEP CON 127.1

CLEARANCE DELIVERY PHONE: For CD if una to ctc on FSS freq, ctc Denver ARTCC at 303-651-4257.**AIRSPACE:** CLASS E svc 1300-0400Z†; other times CLASS G.**RADIO AIDS TO NAVIGATION:** NOTAM FILE MTJ.

(H) VORW/DME 117.1 MTJ Chan 118 N38°30.39' W107°53.96' at fld. 5713/12E. vDME unmonitored.

DME unusable:

011°-090° byd 26NM blo 15,000'

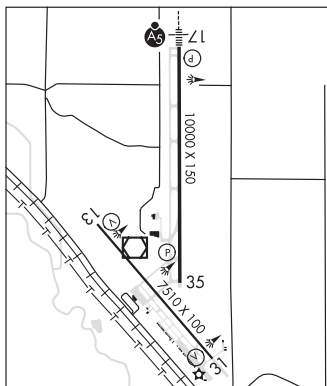
190°-250° byd 25 NM blo 15,000'

VOR unusable:

060°-090° byd 26NM blo 16,000'

190°-250° byd 25 NM blo 15,000'

ILS 111.3 I-MTJ Rwy 17. Unmonitored.

**MONUMENT HILL** MNH N39°13.13' W104°38.43' /7060

AWOS-3 134.375 (303) 648-3479

DENVER

L-10F

NORTH FORK VALLEY (See PAONIA on page 290)**NORTHERN COLORADO RGNL** (See FORT COLLINS/LOVELAND on page 275)