

**PUEBLO MEM** (PUB)(KPUB) 5 E UTC-7(-6DT) N38°17.40' W104°29.88'

**DENVER**  
H-5A, L-10F  
IAP, AD

4729 B Class I, ARFF Index A NOTAM FILE PUB

**RWY 08R-26L:** H10498X150 (ASPH-GRVD) S-75, D-170, 2D-250

HIRL

**RWY 08R:** MALSR. PAPI(P4L)—GA 3.0° TCH 63'. Rgt tfc.

**RWY 26L:** REIL. PAPI(P4L)—GA 3.0° TCH 62'. 0.4 % up..

**RWY 17-35:** H8310X150 (ASPH-GRVD) S-93, D-110, 2S-140, 2D-170 MIRL

**RWY 17:** REIL. PAPI(P4L)—GA 3.0° TCH 54'. 1.0% down..

**RWY 35:** REIL. PAPI(P4L)—GA 3.0° TCH 48'. 0.9% up..

**RWY 08L-26R:** H4690X75 (ASPH-GRVD) S-20, 2S-175 MIRL

**RWY 08L:** REIL. PAPI(P4L)—GA 3.0° TCH 40'.

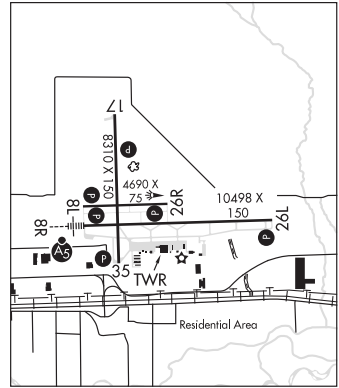
**RWY 26R:** REIL. PAPI(P4L)—GA 3.0° TCH 40'.

**LAND AND HOLD—SHORT OPERATIONS**

LDG RWY	HOLD—SHORT POINT	AVBL LDG DIST
<b>RWY 17</b>	08L-26R	4700
<b>RWY 26L</b>	17-35	8300

**RUNWAY DECLARED DISTANCE INFORMATION**

<b>RWY 08L:</b> TORA-4690 TODA-4690 ASDA-4690 LDA-4690
<b>RWY 08R:</b> TORA-10496 TODA-10496 ASDA-10496 LDA-10496
<b>RWY 17:</b> TORA-8308 TODA-8308 ASDA-8308 LDA-8308
<b>RWY 26L:</b> TORA-10496 TODA-10496 ASDA-10496 LDA-10496
<b>RWY 26R:</b> TORA-4690 TODA-4690 ASDA-4690 LDA-4690
<b>RWY 35:</b> TORA-8308 TODA-8308 ASDA-8308 LDA-8308



**SERVICE:** S4 FUEL 100LL, JET A OX3 LGT When twr clsd ACTIVATE MALSR Rwy 08R; REIL Rwy 08L, Rwy 17, Rwy 26R, Rwy 26L, Rwy 35; PAPI Rwy 08R, Rwy 08L, Rwy 17, Rwy 26R, Rwy 26L, Rwy 35; HIRL Rwy 08R-26L; MIRL Rwy 17-35, Rwy 08L-26R—CTAF.

**AIRPORT REMARKS:** Attended 1200-0500Z†. Conditions not monitored 0500-1200Z†. For fuel after hrs call 719-948-3316 or use 100LL self-svc. Be alert, intensive USAF student training in/ov Colorado Springs and Pueblo Colorado. Rwy 08L-26R avbl to acct under 20,000 lbs during dalgt and night hrs. Twy A between Twy A2 and A6 50' wide. High volume training DA-20 acct Mon-Fri SR-SS. Overhead pat during training. Extensive use of training area 12-28 DME north to southwest of arpt 500' AGL to 8500' MSL Mon-Fri SR-SS. See Special Notices—USAF 306 FTG Flight Training Areas, Vicinity of Colorado Springs and Pueblo Colorado.

**AIRPORT MANAGER:** 719-553-2760

**WEATHER DATA SOURCES:** ASOS (719) 948-2803

**COMMUNICATIONS:** CTAF 119.1 ATIS 125.25 UNICOM 122.95

RCO 122.2 (DENVER RADIO)

Ⓡ DENVER APP/DEP CON 120.1 (1300-0500Z†)

Ⓡ DENVER CENTER APP/DEP CON 128.375 (0500-1300Z†)

TOWER 119.1 (1300-0500Z†) GND CON 121.9 CLNC DEL 120.9

**CLEARANCE DELIVERY PHONE:** For CD ctc Pueblo Apch at 303-342-1916, when Apch clsd ctc Denver ARTCC at 303-651-4257.

**AIRSPACE:** CLASS D svc 1300-0500Z†; other times CLASS E.

**RADIO AIDS TO NAVIGATION:** NOTAM FILE PUB.

(H) VORTACW 116.7 PUB Chan 114 N38°17.66' W104°25.77' 257° 3.2 NM to fld. 4756/8E.

ILS 109.5 I-PUB Rwy 08R. Class IE. Unmonitored when ATCT closed.

ILS 108.3 I-IFR Rwy 26L. Class IA. Unmonitored when ATCT closed.