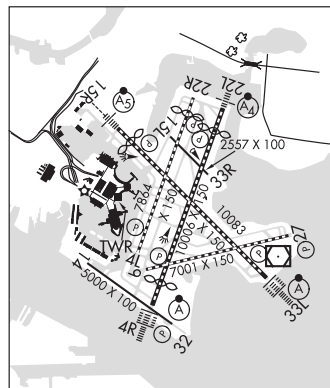


BOSTON

GENERAL EDWARD LAWRENCE LOGAN INTL (BOS)(KBOS) 1 E UTC-5(-4DT)

**NEW YORK
COPTER
H-10J, 11D, 12K, L-33D, 34J
IAP, AD**

- N42°21.78' W71°00.38'
 19 B LRA Class I, ARFF Index E NOTAM FILE BOS
RWY 15R-33L: H10083X150 (ASPH-GRVD) S-120, D-250, 2S-175, 2D-550 PCN 90 F/C/W/T HIRL CL
RWY 15R: MALS:R. TDZL. PAPI(P4L)—GA 3.0° TCH 71'. RVR-TMR Thld dspclcd 882'. Trees.
RWY 33L: ALSF2. TDZL. PAPI(P4R)—GA 3.0° TCH 68'. RVR-TMR Boat.
RWY 04R-22L: H10006X150 (ASPH-GRVD) S-120, D-250, 2S-175, 2D-550 PCN 90 F/C/W/T HIRL CL
RWY 04R: ALSF2. TDZL. PAPI(P4L)—GA 3.0° TCH 67'. RVR-TMR Thld dspclcd 1155'. Boat.
RWY 22L: MALS:F. PAPI(P4R)—GA 3.0° TCH 71'. RVR-TMR Thld dspclcd 1199'. Boat.
RWY 04L-22R: H7864X150 (ASPH-GRVD) S-120, D-250, 2S-175, 2D-550 PCN 90 F/C/W/T HIRL CL
RWY 04L: REIL. PAPI(P4L)—GA 3.0° TCH 50'. RVR-TR Boat.
RWY 22R: PAPI(P4L)—GA 3.0° TCH 50'. RVR-TR Thld dspclcd 819'. Boat.
RWY 09-27: H7001X150 (ASPH-GRVD) S-120, D-250, 2S-175, 2D-550 PCN 90 F/C/W/T HIRL CL
RWY 09: RVR-TR Boat.
RWY 27: REIL. PAPI(P4L)—GA 3.0° TCH 71'. RVR-TR Boat.
RWY 14-32: H5000X100 (ASPH-GRVD) S-120, D-250, 2S-175, 2D-490 PCN 85 F/C/W/T HIRL
RWY 14: Bldg.
RWY 32: REIL. PAPI(P4L)—GA 3.0° TCH 45'.
RWY 15L-33R: H2557X100 (ASPH) S-120, D-250, 2S-175, 2D-550 PCN 90 F/C/W/T MIRL



LAND AND HOLD—SHORT OPERATIONS

LDG RWY	HOLD—SHORT POINT	AVBL LDG DIST
RWY 04L	15L-33R	5250
RWY 15R	09-27	6800
RWY 22L	09-27	6400
RWY 27	04R-22L	5650

RUNWAY DECLARED DISTANCE INFORMATION

RWY 04L:	TORA-7864	TODA-7864	ASDA-7864	LDA-7864
RWY 04R:	TORA-10006	TODA-10006	ASDA-10006	LDA-8851
RWY 09:	TORA-7001	TODA-7001	ASDA-7001	LDA-7001
RWY 14:	TORA-5000	TODA-5000	ASDA-5000	LDA-5000
RWY 15L:	TORA-2557	TODA-2557	ASDA-2557	LDA-2557
RWY 15R:	TORA-10083	TODA-10083	ASDA-10083	LDA-9202
RWY 22L:	TORA-10006	TODA-10006	ASDA-10006	LDA-8806
RWY 22R:	TORA-7864	TODA-7864	ASDA-7864	LDA-7046
RWY 27:	TORA-7001	TODA-7001	ASDA-7001	LDA-7001
RWY 32:	TORA-5000	TODA-5000	ASDA-5000	LDA-5000
RWY 33L:	TORA-10083	TODA-10083	ASDA-10083	LDA-10083
RWY 33R:	TORA-2557	TODA-2557	ASDA-2557	LDA-2557

ARRESTING GEAR/SYSTEM

- RWY 04L: EMAS
- RWY 15R: EMAS

SERVICE: S4 FUEL 100LL, JET A OX 1, 2, 3, 4 LGT Rwy status lights in operation. Rwy 22L VGS! unusable byd 7 degs left of centerline.

AIRPORT REMARKS: Attended continuously. Birds on and invof arpt. Numerous cranes on and invof arpt. Between 0500-1100Z‡ Rwy 15R is preferential night rwy for tkf and Rwy 33L is preferential ngt rwy for ldg. Rwy 14-32 unidirectional, no ldgs Rwy 14, no tkfs Rwy 32. Rwy 09-27 wheel rutting on rwy. International ramp arrivals must obtain a gate assignment from international ramp control before entering ramp area. No remaining overnight parking for non-tenant charter acft without prior Massport permission. ASDE-X in use. Operate transponders with altitude reporting mode and ADS-B (if equipped) enabled on all airport surfaces. Terminal E, North and South Cargo arrivals ctc Massport Gate Control on 131.1 before entering/departing ramp area. Pilots should complete all calculations prior to pushback from gate. For NS ABTMT procedures call 617-561-1636 Mon-Fri 1400-2200Z‡. Ldg fee. Flight Notification Service (ADCUS) available.

CONTINUED ON NEXT PAGE

CONTINUED FROM PRECEDING PAGE

AIRPORT MANAGER: 617-567-5400

WEATHER DATA SOURCES: ASOS (617) 567-5762 TDWR.

COMMUNICATIONS: D-ATIS APP 135.0 D-ATIS DEP 135.0 (617) 455-3003 UNICOM 122.95

BOSTON RCO 122.4 122.1R 112.7T (BRIDGEPORT RADIO)

Ⓡ BOSTON APP/DEP CON 127.2 (South) 120.6 (West) 118.25 (North)

Ⓡ BOSTON DEP CON 133.0

BOSTON TOWER 128.8 (West) 132.225 (East) 124.725 (Helicopters)

GND CON 121.9 121.75 CLNC DEL 121.65

PRE TAXI CLNC 121.65 RAMP CTL 134.05

CPDLC (LOGON KUSA)

AIRSPACE: CLASS B See VFR Terminal Area Chart.

VOR TEST FACILITY (VOT) 111.0

RADIO AIDS TO NAVIGATION: NOTAM FILE BOS.

BOSTON (H) VOR/DME 112.7 BOS Chan 74 N42°21.45' W70°59.37' at fld. 18/16W.

VOR unusable:

061°-104° byd 18 NM blo 2,000'

061°-104° byd 18 NM blo 2,000'

271°-060° byd 25 NM blo 2,000'

271°-060° byd 25 NM blo 3,500'

ILS/DME 110.3 I-BOS Chan 40 Rwy 04R. Class IIIE.

ILS/DME 110.7 I-MDC Chan 44 Rwy 15R. Class IC. Localizer offset angle 001° 35 min.

ILS/DME 110.3 I-LQN Chan 40 Rwy 22L. Class IT. Note *DME also serves Rwy 04R.

ILS/DME 111.3 I-DGU Chan 50 Rwy 27. Class IE.

ILS/DME 110.7 I-LIP Chan 44 Rwy 33L. Class IIIE. LOC unsl byd 33° left side of course.

COMM/NAV/WEATHER REMARKS: DME Channel 40 located 2171' from stop end Rwy 04R and 260' left of centerline is common to Rwy 22L.

CAPE COD (See MARSTON MILLS on page 127)

CAPE COD COAST GUARD AIR STATION (FMH)(KFMH) CG UTC-5(-4DT) N41°39.55'

NEW YORK

W70°31.37'

H-101, 11D, 12K, L-33D

130 B TPA-1100(970) NOTAM FILE FMH Not insp.

IAP, DIAP, AD

RWY 14-32: H9501X150 (ASPH-CONC) PCN 26 F/A/W/T HIRL

RWY 14: REIL. PAPI(P4L)-GA 3.0° TCH 47'. RVR-T

RWY 32: MALSR. PAPI(P4L)-GA 3.0° TCH 50'. RVR-R

RWY 05-23: H8000X150 (ASPH-CONC) PCN 33 F/A/W/T HIRL

RWY 05: REIL. PAPI(P4L)-GA 3.0° TCH 51'. RVR-R

RWY 23: MALSR. PAPI(P4L)-GA 3.0° TCH 53'. RVR-T

SERVICE: FUEL 100, JET B+ OX 2

MILITARY REMARKS: See FLIP AP/1 Supplementary Arpt Information. RSTD Otis ANG ramp clsd to all tran acct. PPR not req for mil/law enf/med fits. Ctc arpt mgmt C508-968-6674 24 hr prior if prkg/RON (excl'd active aeromed missions). No civil lds without prior prmsn fm arpt mgmt. No tran alert svc. ANG ramp unslg/not maintained. ANG apron is the only apron capable of accepting C5 at gross weight. CAUTION Extensive bird act vicinity all rwys especially during low ceiling and wet wx. Ck ATIS for status of small UAS act in Delta airport system plan. Non-std obstn lgtd 368' twrs NE of arpt.

TFC PAT Rotary Wing 970' AGL, Fixed Wing Conventional 1470' AGL, jet overhead 1970' AGL. MISC First 350' Rwy 05

conc, remaining 7650' asph. First 2800' Rwy 14 and first 500' Rwy 32 conc, mid portion asph. Rwy 14-32 and Rwy

05-23 have 25' shoulders. PPR rqr'd if ACN exceeds published PCN. Ctc USCG afd management

C508-968-6673/6674 to obtain approval. ARNG PPR req for arng ramp ltd fuel avbl. Ctc ops C508-968-5850. DSN

557-5850 for PPR verification. Opr 1200-2200Z† Mon-Fri, ltd svc may be avbl Sat-Sun with prior coordination. Ctc

Bosox OPS 10 min prior to arrival on 341.675, 138.5, 46.85. Flt briefing rqr'd prior to ops in R-4101. Ctc OSA F/W det

C508-968-5291/5292 or DSN 557-5291/5292 to coordinate JOSAC passenger arrival/departure. CG PPR rqr'd for Coast

Guard ramp, ltd svc may be avbl with prior coordination C508-968-6360/6361, DSN 557-6360/6361, or

C800-673-1056. Arriving acct ctc Cape Cod Air 345.0, 122.975 or 164.55 15 min prior to arrival. Ltd tran svcs.

Boarding ramps not avbl.

AIRPORT MANAGER: (508) 968-6674

CONTINUED ON NEXT PAGE