

CONTINUED FROM PRECEDING PAGE

AIRSPACE: CLASS D svc 1200-0400Z±; other times CLASS G.

RADIO AIDS TO NAVIGATION: NOTAM FILE CEF.

(L) TACAN Chan 87 CEF (114.0) N42°11.85' W72°31.58' at fld. 241/14W.

No NOTAM MP 1100-1500Z± Fri

TACAN AZIMUTH unusable:

001°-089° byd 35 NM blo 7,000'

090°-110° blo 8,000'

111°-180° byd 20 NM blo 7,000'

220°-240° byd 24 NM blo 4,000'

305°-320° byd 15 NM blo 4,000'

DME unusable:

001°-089° byd 20 NM blo 7,000'

090°-110° blo 8,000'

111°-180° byd 20 NM blo 7,000'

220°-240° byd 24 NM blo 4,000'

305°-320° byd 15 NM blo 4,000'

BARNES (L) VORTACW 113.0 BAF Chan 77 N42°09.72' W72°42.97' 091° 8.3 NM to fld. 267/14W. NOTAM FILE BAF.

VORTAC unusable:

310°-340° byd 25 NM blo 6,500'

VOR unusable:

249°-260° byd 10 NM blo 10,000'

ILS 109.9 I-GWJ Rwy 05. Class IE. Unmonitored when ATCT clsd.

ILS 109.9 I-CEF Rwy 23. Class IE. Mnt 1200-0400Z±. No NOTAM MP: Rwy 05-23 1400-1600Z± Mon, Wed, Fri. Unmonitored when ATCT clsd.

COMM/NAV/WEATHER REMARKS: Twr ops extrn/irregular hrs by NOTAM. ATIS No NOTAM MP Thu 1400-1600Z±.

WORCESTER RGNL (ORH)(KORH) 3 W UTC-5(-4DT) N42°16.03' W71°52.54'

NEW YORK

1009 B LRA Class I, ARFF Index B NOTAM FILE ORH

H-101, 11D, 12K, L-33C, 34J

RWY 11-29: H7001X150 (ASPH-GRVD) S-120, D-250, 2S-138,

2D-550 PCN 89 F/C/W/T HIRL CL

RWY 11: ALSF2. TDZL. PAPI(P4R)—GA 3.0° TCH 55'. RVR-TR Hill.

RWY 29: REIL. PAPI(P4L)—GA 3.0° TCH 54'. RVR-TR

RWY 15-33: H5000X100 (ASPH-GRVD) S-85, D-120, 2S-138,

2D-210 PCN 35 F/C/W/T MIRL

RWY 15: REIL. VASI(V4L)—GA 3.6° TCH 42'. Antenna.

RWY 33: REIL. PAPI(P4L)—GA 3.0° TCH 40'.

RUNWAY DECLARED DISTANCE INFORMATION

RWY 11: TORA-7001 TODA-7001 ASDA-7001 LDA-7001

RWY 15: TORA-5000 TODA-5000 ASDA-5000 LDA-5000

RWY 29: TORA-7001 TODA-7001 ASDA-7001 LDA-7001

RWY 33: TORA-5000 TODA-5000 ASDA-5000 LDA-5000

ARRESTING GEAR/SYSTEM

RWY 11: EMAS

RWY 29: EMAS

SERVICE: S4 FUEL 100LL, JET A LGT ACTIVATE REIL Rwy 15, 29 and 33, HIRL Rwy 11-29, MIRL Rwy 15-33—CTAF. Rwy 11 ALSF-2 becomes SSALS preset on med intensity only when twr clsd.

AIRPORT REMARKS: Attended continuously. Wildlife invof arpt, birds on and invof arpt. Use caution for arpt vehicles monitor CTAF and operating on arpt during non-twr hrs. During snow removal ops 30 mins PPR on frequency 120.5 during twr hrs or frequency 119.0 during non-twr hrs or call 508-799-1325. Tran acct ctc FBO on 122.95 for svcs. Rwy 33 VGSI and decent angle not coincident. Rwy 15 VASI unusable byd 9° left of course. Rwy guard lgts installed on all twy to rwy intersections, Rwy 11-29 only. EMAS 170' wide, 154' length located at DER 11. EMAS 170' wide, 300' length located at DER 29. Ldg fee for multi-engine acct and larger. Flight Notification Service (ADCUS) available. 2 hours advance notice for customs.

AIRPORT MANAGER: (508) 849-5550

WEATHER DATA SOURCES: ASOS (508) 795-7546

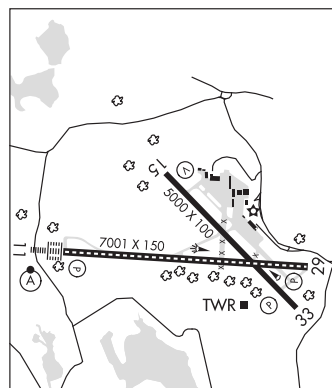
COMMUNICATIONS: CTAF 120.5 ATIS 126.55 (508) 757-0962 UNICOM 122.95

RCO 122.2 (BRIDGEPORT RADIO)

® YANKEE APP/DEP CON 119.0 CLNC DEL 119.0 (0200-1130Z±)

TOWER 120.5 (1100-0600Z±) GND CON 123.85 CLNC DEL 128.65

CLEARANCE DELIVERY PHONE: For CD if una to ctc on FSS freq, ctc Boston ARTCC at 603-879-6859.



CONTINUED ON NEXT PAGE