

JOHN F KENNEDY INTL (JFK)(KJFK) 13 SE UTC-5(-4DT) N40°38.40' W73°46.72'

NEW YORK

13 B LRA Class I, ARFF Index E NOTAM FILE JFK

COPTER

RWY 13R-31L: H14511X200 (CONC-GRVD) D-210, 2S-175,

H-101, 121, L-33B, 34H

2D-550, 2D/2D2-1100 PCN 98 R/B/W/T HIRL CL
RWY 13R: RLLS. PAPI(P4L)—GA 3.0° TCH 79'. RVR-TMR Thld dspclcd 2043'. Rgt tfc.

IAP, AD

RWY 31L: PAPI(P4L)—GA 3.0° TCH 67'. RVR-TMR Thld dspclcd 3263'.

RWY 04L-22R: H12079X200 (CONC-GRVD) D-210, 2S-175, 2D-550, 2D/2D2-1100 PCN 90 R/B/W/T HIRL CL

RWY 04L: TDZL. REIL. PAPI(P4L)—GA 3.0° TCH 75'. RVR-TR Thld dspclcd 460'.

RWY 22R: PAPI(P4L)—GA 3.0° TCH 77'. RVR-TR Thld dspclcd 3425'. Tree.

RWY 13L-31R: H10000X200 (CONC-GRVD) D-210, 2S-175, 2D-550, 2D/2D2-1100 PCN 148R/A/W/T HIRL CL

RWY 13L: ALSF2. TDZL. PAPI(P4L)—GA 3.0° TCH 74'. RVR-TR Thld dspclcd 907'. Pole. Rgt tfc.

RWY 31R: MALSR. TDZL. PAPI(P4R)—GA 3.0° TCH 54'. RVR-TR Thld dspclcd 1027'. Tree.

RWY 04R-22L: H8400X200 (ASPH-GRVD) D-210, 2S-175, 2D-550, 2D/2D2-1100 PCN 90 F/B/W/T HIRL CL

RWY 04R: ALSF2. TDZL. PAPI(P4L)—GA 3.0° TCH 69'. RVR-TMR
RWY 22L: ALSF2. TDZL. PAPI(P4L)—GA 3.0° TCH 66'. RVR-TMR Tree.

RUNWAY DECLARED DISTANCE INFORMATION

RWY 04L:TORA-11351 TODA-11351 ASDA-11470 LDA-11010

RWY 04R:TORA-8400 TODA-8400 ASDA-8400 LDA-8400

RWY 13L:TORA-10000 TODA-10000 ASDA-10000 LDA-9093

RWY 13R:TORA-14511 TODA-14511 ASDA-14511 LDA-12468

RWY 22L:TORA-8400 TODA-8400 ASDA-8400 LDA-8400

RWY 22R:TORA-12079 TODA-12079 ASDA-11219 LDA-7795

RWY 31L:TORA-14511 TODA-14511 ASDA-14511 LDA-11248

RWY 31R:TORA-10000 TODA-10000 ASDA-9513 LDA-8486

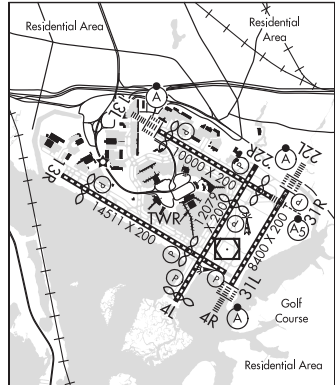
ARRESTING GEAR/SYSTEM

RWY 04R: EMAS

RWY 22L: EMAS

SERVICE: S4 FUEL 100LL, JET A 0X1, 3

AIRPORT REMARKS: Special Air Traffic Rules—Part 93 High Density Arprt. Prior reservation rqrd. See Aeronautical Information Manual. Attended continuously. General Aviation, non based coml acft oprs must make arrangements for fuel prior to arr call 347-566-6620 or UNICOM 122.95. Acft opr and twy restrictions exist for A380, B747-800, B777-300ER and A340-600, and A350-1000. Please ctc JFK arprt ops for more info. High volume of low level VFR traffic, 500' and bld, along shoreline south of JFK. Para-sail and banner towing ops 1000' and bld in upper and lower New York bays incl Rockaway inlet indef. For NS ABTMT restrictions call 212-435-3747 dur nml business hrs. Flocks of birds on and in/ovf arprt. Caution Rwy 13R can be confused with Rwy 13L. Converging ops on Rwy 13R and Rwy 22L conducted via arr distance window. Coded transponder rqrd. Exp to leave and re-enter the Class B Airspace dur moderate to heavy arr periods. ASDE-X in use. Operate transponders with altitude reporting mode and ADS-B (if equipped) enabled on all airport surfaces. Metering procedures in effect-ctc ramp ctl prior to pushback 1200-1500Z± daily, 1900-0300Z± daily. RLLS Rwy 13L uses 1000' lgt station of the ALS only with CRI VOR apchs and is angled toward AQUEDUCT, also 5 SFL from 1200'-2000' and a 5 SFL grouping aprx 1 mile from rwy +1 adjacent forming apch. Apch gate angled 35° south of Rwy 13L cntrln designed to provide earlier ident of rwy environment. Rwy 22L ALSF2 NSTD lgt spacing. Rwy 13R first P4L horizontal offset 22° left. Rwy 13R has two (2) PAPI-P4L systems. (Rwy 13R) offset PAPI supports VOR or GPS Rwy 13R and parkway visual Rwy 13R. Rwy 22L PAPI horizontal offset 4° to left. Rwy 22R PAPI unusable beyond 8° rgt of centerline. Rwy 13L PAPI rotated 10 deg right of rwy centerline. Rwy 13L PAPI unusable left of rwy centerline. Continuous taxiway maintenance activities at numerous locations. Twy A between Twy NA and Twy NB acft speed restriction of 17 kts/20 mph maximum for A380, B747-800, B747-400, B777-300ER, B777-200, A340, A330, B787 and A350. UFN Twy D between Twy C and hangar 7 clsd. Twy H CL lgts between Twy A and Rwy 04L-22R OTS. Twy H CL lgts between terminal 4 ramp and Twy A OTS. Twy NB clsd to Southbound turns at Twy A. Acft are not permitted to stop on either Twy A or B bridges. Periodic fire department training adjacent apch end of Rwys 22L and 22R. Twy Q3 cntrln lights OTS. Rwy 31R holding position markings at Rwy 04L-22R southeast side obsc. Rwy 13L holding position markings at Rwy 04L-22R northwest side obsc. Obstruction bldg lgt OTS 6.3 NM ESE JFK 222' MSL (220' AGL). NSTD engineered materials Arresting System (EMAS) 393' in length by 226' in width lctd at ther DER 04R. NSTD engineered materials Arresting System (EMAS) 405' in length by 226' in width lctd at ther DER 22L. Rwy status lgts in ops. Rwy 31R 1000 ft dist remaining sign misg. Ldg fee. Flight Notification Service (ADCUS) avbl.



CONTINUED ON NEXT PAGE

CONTINUED FROM PRECEDING PAGE

AIRPORT MANAGER: (718) 244-3501

WEATHER DATA SOURCES: ASOS 128.725 (718) 656-0956. LLWAS. TDWR.

COMMUNICATIONS: D-ATIS ARR/DEP 128.725 D-ATIS ARR-SW 115.4 D-ATIS ARR-NE 117.7 UNICOM 122.95

KENNEDY RCO 122.1R 115.9T (NEW YORK RADIO)

① NEW YORK APP CON 125.7 128.125

① NEW YORK DEP CON 135.9

TOWER 119.1 (Rwys 04R-22L and 13L-31R) 123.9 (Rwy 04L-22R and 13R-31L)

GND CON 121.9 CLNC DEL/PRE TAXI CLNC 135.05 RAMP CTL 125.05

CPDLC (LOGON KUSA)

AIRSPACE: CLASS B See VFR Terminal Area Chart.

RAID AID TO NAVIGATION: NOTAM FILE JFK.

KENNEDY (H) VOR/DME 115.9 JFK Chan 106 N40°37.97' W73°46.28' at fld. 11/12W.

VOR/DME unusable:

100°-299° byd 30 NM blo 2,000'

300°-059° byd 30 NM blo 2,500'

060°-099° byd 25 NM blo 2,500'

CANARSIE (T) VOR/DME 112.3 CRI Chan 70 N40°36.75' W73°53.67' O84° 5.5 NM to fld. 10/11W.

VOR unusable:

047°-175°

224°-035°

ILS/DME 110.9 I-HIQ Chan 46 Rwy 04L. Class IE. Glideslope unusable byd 5° right of course. Auto cpd apchs na blw 500ft MSL.

ILS/DME 109.5 I-JFK Chan 32 Rwy 04R. Class IIIE. DME also serves Rwy 22R.

ILS/DME 111.5 I-TLK Chan 52 Rwy 13L. Class IIE. LOC unusable byd 11 DME. DME unusable byd 30° right of centerline. Glideslope unusable byd 8 NM.

ILS/DME 110.9 I-IWY Chan 46 Rwy 22L.

ILS/DME 109.5 I-JOC Chan 32 Rwy 22R. Localizer offset angle 2.5 deg. DME also serves Rwy 04R.

ILS 111.35 I-MOH Rwy 31L. Class IT.

ILS/DME 111.5 I-RTH Chan 52 Rwy 31R. Class ID. LOC unusable byd 15° left side of course. ILS rth markings obsc at twy k indef.

COMM/NAV/WEATHER REMARKS: Use caution for possible radio interference or false instructions on twr frequencies.

LAGUARDIA (LGA)(KLGA) 4 E UTC-5(-4DT) N40°46.64' W73°52.36'

NEW YORK

21 B LRA Class I, ARFF Index D NOTAM FILE LGA

COPTER

RWY 13-31: H7003X150 (ASPH-CONC-GRVD) S-80, D-170, 2S-175, 2D-360 PCN 63 F/B/W/T

H-101, 121, L-33B, 34H

HIRL CL

IAP, AD

RWY 13: MALSR. TDZL. PAPI(P4L)—GA 3.1° TCH 55'. RVR-TR

RWY 31: REIL. PAPI(P4R)—GA 3.0° TCH 71'. RVR-TR Bldg.

RWY 04-22: H7001X150 (ASPH-CONC-GRVD) S-80, D-170, 2S-175, 2D-360 PCN 63 F/B/W/T HIRL CL

RWY 04: MALSR. TDZL. PAPI(P4R)—GA 3.1° TCH 76'. RVR-TR Bldg.

RWY 22: ALSF1. TDZL. PAPI(P4R)—GA 3.0° TCH 67'. RVR-TR

RUNWAY DECLARED DISTANCE INFORMATION

RWY 04: TORA-7001 TODA-7001 ASDA-7001 LDA-7001

RWY 13: TORA-7003 TODA-7003 ASDA-7003 LDA-7003

RWY 22: TORA-7001 TODA-7001 ASDA-7001 LDA-7001

RWY 31: TORA-7003 TODA-7003 ASDA-7003 LDA-7003

ARRESTING GEAR/SYSTEM

RWY 04: EMAS

RWY 13: EMAS

RWY 22: EMAS

RWY 31: EMAS

SERVICE: S4 FUEL 100LL, JET A OX 1, 2, 3, 4

AIRPORT REMARKS: Special Air Traffic Rules—Part 93, High Density Arprt, Prior Reservation Required, see Aeronautical

Information Manual. Coded Transponder reqrd. VFR reservation info avbl on ATIS. Attended continuously. Ship masts in apch Rwy 31. Flocks of birds on and invof arprt. Obst sign structure unknown (39' AGL) 500' east of Rwy 04-22 cntrin and 4,800' south of Rwy 13-31 cntrin. Exp to leave and re-enter the Class B Airspace dur moderate to heavy arr periods. Magnetic anomalies may affect compass hdg when using extn Rwy 13 and Rwy 22 for tkf. NS ABTMT procedures in effect for details ctc afld mgr. Helicopter pad lctd at the int of Twy D and Twy F clsd indef. Twy G, Twy P, Twy R and Twy U conc deck rstcd to 5 kts turns, 10 kts straight. Twy F and Twy D west of Twy BB clsd to acft with wingspans in excess of 125'. Twy F lctd btn Twy BB and Twy Y clsd indef. B767-400 acft rstcd to 10 kts on Twy DD, Twy Z, Twy B, and Twy AA. ASDE-X in use. Operate transponders with altitude reporting mode and ADS-B (if equipped) enabled on all airport surfaces. Rwy status lgts in opr. Rwy 13 PAPI and ILS not coincidental. Rwy 13 PAPI and RNAV glidepath not coincident. Rwy 22 PAPI and glidepath not coincident. Rwy 31 PAPI and RNAV glidepath not coincident. PAPI Rwy 13 unusable 8° left of cntrin and 9° rgt of cntrin. Ldg fee. Flight Notification Service (ADCUS) avbl.

CONTINUED ON NEXT PAGE