

MAPLE LAKE MUNI—BILL MAVENCAMP SR FLD (MGG)(KMG) 1 NE UTC-6(-5DT) N45°14.16'

TWIN CITIES

W93°59.14'

L-14H, A

1028 B NOTAM FILE MGG

IAP, AD

RWY 10-28: H2796X60 (ASPH) LIRL(NSTD)

RWY 10: Thld dsplcd 100'.

RWY 28: Trees.

SERVICE: FUEL 100LL LGT Rwy 10-28 NSTD LIRL, 400' spacing between lights; 20' from edge.

AIRPORT REMARKS: Unattended. Fuel avbl 24 hrs with credit card, fuel grade not mkd on pump. Migratory waterfowl on and invof arpt. One tkof/Indg per flight ops, no tgl or training.

AIRPORT MANAGER: 320-963-3738

WEATHER DATA SOURCES: AWOS-3 128.325 (320) 963-3300.

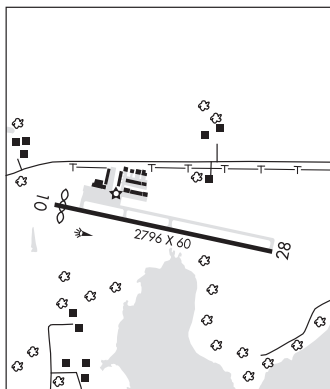
COMMUNICATIONS: CTAF/UNICOM 122.8

Ⓡ **MINNEAPOLIS APP/DEP CON** 126.5

CLEARANCE DELIVERY PHONE: For CD ctc Minneapolis Apch at 612-726-9086.

RADIO AIDS TO NAVIGATION: NOTAM FILE PNM.

DARWIN (L) VORTAC 109.0 DWN Chan 27 N45°05.25' W94°27.23' 059° 21.8 NM to fld. 1130/7E.



MARSHALL

SOUTHWEST MINNESOTA RGNL MARSHALL/RYAN FLD (MML)(KMML) 1 W UTC-6(-5DT)

OMAHA

N44°27.10' W95°49.47'

H-21, L-121

1183 B NOTAM FILE MML

IAP

RWY 12-30: H7221X100 (ASPH) S-72, D-105 PCN 27 F/B/X/T HIRL

RWY 12: MALSR. PAPI(P4L)—GA 3.0° TCH 50'.

RWY 30: MALSF. PAPI(P4L)—GA 3.0° TCH 32'.

RWY 02-20: H3999X75 (ASPH) MIRL

RWY 02: REIL. PAPI(P4L)—GA 3.0° TCH 32'.

RWY 20: REIL. PAPI(P4L)—GA 3.0° TCH 57'.

SERVICE: S4 FUEL 100LL, JET A LGT ACTIVATE REIL Rwy 02-20, PAPI Rwy 02 and Rwy 20, MIRL Rwy 02-20, MALSR Rwy 12, MALSF Rwy 30, PAPI Rwy 12 and Rwy 30, HIRL Rwy 12-30—CTAF.

AIRPORT REMARKS: Attended Mon-Thu 1400-0000Z. For svc after hrs call 507-532-3164. Self svc fuel avbl 24 hrs with credit card.

AIRPORT MANAGER: 507-537-6773

WEATHER DATA SOURCES: AWOS-3PT 120.150 (507) 532-5269.

COMMUNICATIONS: CTAF/UNICOM 122.8

MARSHALL RCO 122.35 (PRINCETON RADIO)

MINNEAPOLIS CENTER APP/DEP CON 127.1

GCO 121.725 (MINNEAPOLIS CENTER and FLIGHT SERVICES)

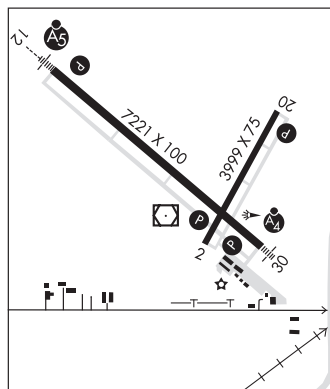
CLEARANCE DELIVERY PHONE: For CD if una to ctc on FSS freq, ctc Minneapolis ARTCC at 651-463-5588.

RADIO AIDS TO NAVIGATION: NOTAM FILE MML.

MARSHALL (T) VORW/DME 111.0 MML Chan 47 N44°26.90' W95°49.49' at fld. 1180/5E. unmonitored.

GARNO NDB (LOMW) 253 GB N44°30.12' W95°54.66' 124° 4.8 NM to fld. 1178/5E.

ILS 109.7 I-GBY Rwy 12. LOM GARNO NDB. Unmonitored.



MARSHALL N44°26.90' W95°49.49' NOTAM FILE MML.

OMAHA

(T) VORW/DME 111.0 MML Chan 47 at Southwest Minnesota Rgnl Marshall/Ryan Fld. 1180/5E. unmonitored.

L-121

RCO 122.35 (PRINCETON RADIO)