

PARKERSBURG**MID—OHIO VALLEY RGNL** (PKB)(KPKB) P (ARNG) 6 NE UTC-5(-4DT) N39°20.70' W81°26.36'

CINCINNATI

859 B Class I, ARFF Index A NOTAM FILE PKB

H-10G, 12I, L-29B

RWY 03-21: H7240X150 (ASPH-GRVD) S-85, D-100, 2D-175

IAP, AD

PCN 31 R/C/X/T HIRL 0.8% up NE

RWY 03: MALSR. PAPI(P4L)—GA 3.0° TCH 48'. RVR-TR**RWY 21:** REIL. PAPI(P4R)—GA 3.0° TCH 56'. RVR-TR Thld dsplcd 460'.**RWY 10-28:** H4002X150 (ASPH-GRVD) S-50, D-75, 2D-135

PCN 30 R/C/X/T HIRL

RWY 10: REIL. PAPI(P2L)—GA 3.0° TCH 46'.**RWY 28:** REIL. PAPI(P2L)—GA 3.0° TCH 43'.**RUNWAY DECLARED DISTANCE INFORMATION****RWY 03:** TORA-7240 TODA-7240 ASDA-6780 LDA-6780**RWY 10:** TORA-4002 TODA-4002 ASDA-4002 LDA-4002**RWY 21:** TORA-7240 TODA-7240 ASDA-7240 LDA-6780**RWY 28:** TORA-4002 TODA-4002 ASDA-4002 LDA-4002**SERVICE:** S2 **FUEL** 100LL, JET A **LGT** When twr clsd ACTIVATE MALSR

Rwy 03, REIL Rwy 10 and Rwy 21, HIRL Rwy 03-21 and Rwy

10-28—CTAF. PAPI Rwy 03-21 opr continuously, REIL Rwy 28

unavbl when twr clsd. Rwy 21 VGSi unusbl byd 5° left and 9° rgt of

cntrln. Rwy 28 VGSi usubl byd 8° left and 8° rgt of cntrln.

MILITARY—FUEL A+, A, JP8 (Opr 1030-00430Z‡ C304-464-5113,

OT 2 hr PN C304-464-5115 fee \$55.) (NC-100LL)

AIRPORT REMARKS: Attended continuously. PPR 30 min for unscheduled air carrier ops with more than 30 passenger seats, call arpt manager 304-464-5115. Deer on and invof arpt. No ldg fee for acft less than 6,500 lbs. for acft greater than 6,500, ldg fee waived with fuel purchases.**AIRPORT MANAGER:** 304-464-5113**WEATHER DATA SOURCES:** ASOS (304) 464-1001**COMMUNICATIONS:** CTAF 123.7 ATIS 124.35 **UNICOM** 122.95**PARKERSBURG RCO** 122.2 (ELKINS RADIO)® **INDIANAPOLIS CENTER APP/DEP CON** 125.55**PARKERSBURG TOWER** 123.7 (1200-0400Z‡) **GND CON** 121.7**CLEARANCE DELIVERY PHONE:** When ATCT clsd, for CD ctc Indianapolis ARTCC at 317-247-2411.**AIRSPACE:** CLASS D svc 1200-0400Z‡; other times CLASS E.**RADIO AIDS TO NAVIGATION:** NOTAM FILE PKB.**PARKERSBURG (L) VORW/DME** 108.6 JPU Chan 23 N39°26.47' W81°22.49' 211° 6.5 NM to fld. 1016/3W.**VERSI NDB (LOMW)** 388 PK N39°15.24' W81°29.10' 028° 5.9 NM to fld. 812/7W.

NDB unusable:

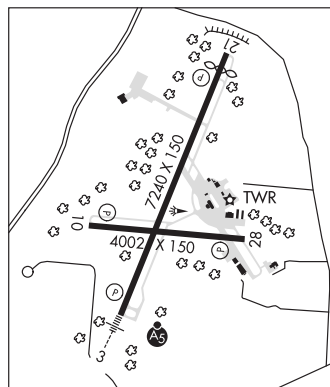
000°-094° byd 10 NM blo 3,000'

095°-149°

150°-210° byd 10 NM

ILS 110.7 I-PKB Rwy 03. Class IB. LOM VERSI NDB. LOM unusable 000°-094° byd 10 NM blo 3,000';

95°-149° 150°-210° byd 10 NM. LOM unmonitored.

**PARKERSBURG** N39°26.47' W81°22.49' NOTAM FILE PKB.

CINCINNATI

(L) VORW/DME 108.6 JPU Chan 23 211° 6.5 NM to Mid-Ohio Valley Rgnl. 1016/3W.

H-10G, 12H, L-29B

RCO 122.2 (ELKINS RADIO)