

PACIFIC CITY STATE (PFC)(KPFC) 1 S UTC-8(-7DT) N45°11.96' W123°57.71'
10 NOTAM FILE MMV

SEATTLE

RWY 14-32: H1860X30 (ASPH) S-7

RWY 14: Tree.

RWY 32: Trees.

AIRPORT REMARKS: Unattended. Owner advises ctc with Department of Aviation 503-378-4880 prior to use. Rwy may be under water dur winter high tides. Ocnl driftwood on rwy due to flooding. Downwind llds not recommended and may not be possible. Many close in obst on both sides of rwy. Exp low level turbulence dur crosswind cond. Assorted trees and 40' p-line at 500' north of rwy. Ramp in poor cond. Pre-tkof engine run-ups to be conducted at the parking ramp only.

AIRPORT MANAGER: 503-378-4880

COMMUNICATIONS: CTAF 122.9

CLEARANCE DELIVERY PHONE: For CD ctc Seattle ARTCC at 253-351-3694.

PAISLEY (22S) 3 NW UTC-8(-7DT) N42°43.08' W120°33.77'

KLAMATH FALLS

4395 B NOTAM FILE MMV

L-11A

RWY 13-31: H4300X60 (ASPH) LIRL 0.4% up SE

AIRPORT REMARKS: Unattended. Rwy 13 has aiming points.

AIRPORT MANAGER: 541-947-4222

COMMUNICATIONS: CTAF 122.9

CLEARANCE DELIVERY PHONE: For CD ctc Seattle ARTCC at 253-351-3694.

RADIO AIDS TO NAVIGATION: NOTAM FILE LKV.

LAKEVIEW (H) VORTACW 112.0 LKV Chan 57 N42°29.57' W120°30.43' 331° 13.7 NM to fld. 7465/19E.

PEAVINE (See ENTERPRISE on page 140)

PENDLETON

EASTERN OREGON RGNL AT PENDLETON (PDT)(KPDT) P (ARNG) 3 NW UTC-8(-7DT) N45°41.69' SEATTLE

W118°50.58'

H-1C, L-13A

1497 B NOTAM FILE PDT

IAF, AD

RWY 08-26: H6301X150 (ASPH-PFC) S-115, D-132, 2D-210

PCN 34 F/B/Y/U HIRL

RWY 08: ODALS. VASI(V4R)—GA 3.0° TCH 35'. RVR-R Ground.

RWY 26: MALSR. PAPI(P4L)—GA 3.0° TCH 56'. RVR-T

RWY 11-29: H5582X100 (ASPH-GRVD) S-70, D-120, 2S-152,

2D-122 PCN 18 F/B/Y/U MIRL

RWY 11: REIL. PAPI(P4L)—GA 3.0° TCH 43'.

RWY 29: REIL. PAPI(P4L)—GA 3.0° TCH 84'. Thld dspcd 456'.

RUNWAY DECLARED DISTANCE INFORMATION

RWY 08: TORA-6301 TODA-6301 ASDA-6301 LDA-6301

RWY 11: TORA-5582 TODA-5582 ASDA-5126 LDA-5126

RWY 26: TORA-6301 TODA-6301 ASDA-6301 LDA-6301

RWY 29: TORA-5582 TODA-5582 ASDA-5582 LDA-5126

SERVICE: S4 FUEL 100LL, JET A1+, MOGAS LGT When ATCT clsd

ACTVT MALSR Rwy 26; ODALS Rwy 08; REIL Rwy 11 and Rwy 29;

VASI Rwy 08, PAPI Rwy 11 and Rwy 29; HIRL Rwy 08-26; MIRL Rwy

11-29—CTAF. Rwy 11-29 PCL for hi inst 5 clicks only. REIL Rwy 11

OTS. REIL Rwy 29 OTS. **MILITARY— FUEL** (NC-100LL, A1+ - Self svc

avbl H24.)

AIRPORT REMARKS: Attended 1400-0400Z†. Svcs avbl from FBO btn 0400-1400Z† by phone call 541-276-3313 or 541-310-9542. Self fueling cardlocks avbl 24 hrs. Clsd to unscheduled air carrier ops with more than 30 pax seats exc PPR 4 hrs call 541-276-4411. Cold temperature restricted airport. Altitude correction required at or below -22C. Deer on and invof arpt Apr and Aug especially mornings and evenings. Thld Rwy 29 NSTD marking, portion of rwy to function as twy. Twy B clsd south of Twy A. Int of ramp and Rwy 29 north end of terminal bldg, area obstructed from view of twr by terminal bldg. Rwy 08-26 surface condition unmonitored 1400-0400Z†. Rwy 11-29 surface condition unmonitored 1400-0400Z†. Fqt dly UAS actvty (lge and small) inside and invof the CDAS.

AIRPORT MANAGER: 541-276-7754

WEATHER DATA SOURCES: ASOS 118.325 (541) 278-2329.

COMMUNICATIONS: CTAF 119.7 UNICOM 122.95

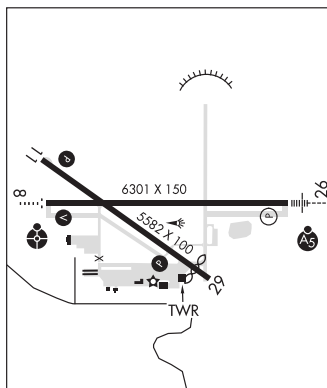
PENDLETON RCO 122.2 (MC MINNVILLE RADIO)

Ⓡ CHINOOK APP/DEP CON 133.15 (1400-0600Z†)

Ⓡ SEATTLE CENTER APP/DEP CON 132.6 (0600-1400Z†)

TOWER 119.7 (1400-0400Z†) GND CON 121.9

CLEARANCE DELIVERY PHONE: When Apch clsd, for CD ctc Seattle ARTCC at 253-351-3694



CONTINUED ON NEXT PAGE

CONTINUED FROM PRECEDING PAGE

AIRSPACE: CLASS D svc 1400-0400Z±; other times CLASS E.

RADIO AIDS TO NAVIGATION: NOTAM FILE PDT.

PENDLETON (H) VORTACW 114.7 PDT Chan 94 N45°41.91' W118°56.32' 079° 4.0 NM to fld. 1575/14E.

TACAN azimuth shutdown, TACAN DME operational

ILS 110.3 I-PDT Rwy 26. Class IE. LOC and glideslope unmonitored when twr clsd.

COMM/NAV/WEATHER REMARKS: Emerg freq 121.5 not avbl at twr.

PINEHURST STATE (24S) 1 SW UTC-8(-7DT) N42°06.61' W122°22.99'

KLAMATH FALLS

3643 NOTAM FILE MMV

RWY 04-22: H2800X30 (ASPH) 2.0% up SW

RWY 04: Trees.

RWY 22: Trees.

AIRPORT REMARKS: Unattended. Surface conditions not reported. Irregular winter maintenance. Arpt may be clsd by snow.

Strong winds from any direction will likely cause low-level turbulence. Rwy 04-22 70' trees along both sides of rwy 125' from centerline. Rwy 22 slopes up to the SW, with abrupt 4% rise on SW half of rwy. Owner advises contact Oregon Dept. of Aviation 503-378-4880 prior to use.

AIRPORT MANAGER: 503-378-4880

COMMUNICATIONS: CTAF 122.9

CLEARANCE DELIVERY PHONE: For CD ctc Seattle ARTCC at 253-351-3694.

PORTLAND

PORTLAND DOWNTOWN HELIPORT (61J) 0 N UTC-8(-7DT) N45°31.52' W122°40.26'

SEATTLE

78 B NOTAM FILE MMV

HELIPAD H1: H80X80 (CONC) S-25 PERIMETER LGTS

SERVICE: LGT For heliport PLASI when approaching flt apch and tkf 020-activate CTAF 3 times. When approaching flt apch and tkf 025-activate CTAF 5 times. When approaching flt apch and tkf 030-activate CTAF 7 times.

HELIPORT REMARKS: Unattended. +199' radio twr (lgtd) 4950' E of heliport in flt apch and tkf 025°. Helipad H1 yellow perimeter lgts, blue centerline twy lgts to helipads. Helipad H1 single heliport with 4 flt apchs 162°/220°/248°/295° and tkf directions 342°/040°/068°/115°. Arrow lgts for flt apch 220°/248°/295° and tkf 040°/068°/115°. Ldg fee.

AIRPORT MANAGER: 503-823-5049

COMMUNICATIONS: CTAF/UNICOM 123.075

CLEARANCE DELIVERY PHONE: For CD ctc Portland Apch at 503-493-7545.