

HICKORY

HICKORY RGNL (HKY)(KHKY) 3 W UTC-5(-4DT) N35°44.47' W81°23.37'

CHARLOTTE
H-9B, 12H, L-25D
IAP, AD

1190 B Class I, ARFF Index A NOTAM FILE HKY MON Airport

RWY 06-24: H6401X150 (ASPH-GRVD) S-120, D-198, 2D-321,

2D/2D2-766 PCN 56 F/C/W/T HIRL 0.8% up NE

RWY 06: REIL. PAPI(P4L)—GA 3.0° TCH 57'. Trees.

RWY 24: MALSR. PAPI(P4L)—GA 3.0° TCH 54'.

RWY 01-19: H4400X150 (ASPH) S-78, D-104 PCN 30 F/C/X/T

MIRL 0.6% up N

RWY 01: REIL. PAPI(P4L)—GA 3.0° TCH 42'. Tree.

RWY 19: REIL. VASI(V4R)—GA 3.0° TCH 33'.

SERVICE: S4 FUEL 100LL, JET A OX 1, 2 LGT Dusk-Dawn. ACTVT
MALSR Rwy 24; REIL Rwy 01; PAPI Rwy 06 and 24; HIRL Rwy
06-24; MIRL Rwy 01-19—CTAF (0400-1200Z). Rwy 19 VASI
unusbl byd 5° rgt of crs.

AIRPORT REMARKS: Attended Mon-Fri 1200-0000Z, Sat-Sun
1200-0000Z. Svcs avbl Mon-Fri 0700-2100 lcl, Sat and Sun
0700-1900 lcl, after hrs svcs call 828-514-5638. Fuel: 100LL
avbl after hrs with credit card. Tkfs Rwy 19 prohibited when twr clsd.
No line of sight btn Rwy 19 and Rwy 24. Clsd to unscheduled air
carrier ops with more than 30 pax seats exc 24 hr PPR call arpt mgr
828-323-7408. Rwy 01-19 moderate transverse and longitudinal
cracking; vegetation present in cracking. Rwy 06-24 markings badly
faded. Twy A at AER 24 not vsb from the twr. Twy B at AER 19 not vsb from the twr.

AIRPORT MANAGER: 828-323-7408

WEATHER DATA SOURCES: ASOS 118.325 (828) 322-2996.

COMMUNICATIONS: CTAF 128.15

Ⓡ ATLANTA CENTER APP/DEP CON 125.15

TOWER 128.15 (1200-0200Z)

GND CON 121.7 **CLNC DEL** 121.7 **CLNC DEL** 124.25 (when twr clsd)

AIRSPACE: CLASS D svc 1200-0200Z; other times CLASS E.

VOR TEST FACILITY (VOT) 110.0

RADIO AIDS TO NAVIGATION: NOTAM FILE RDU.

BARRETT'S MOUNTAIN (L) VOR/DME 110.8 BZM Chan 45 N35°52.13' W81°14.43' 230° 10.6 NM to fld.

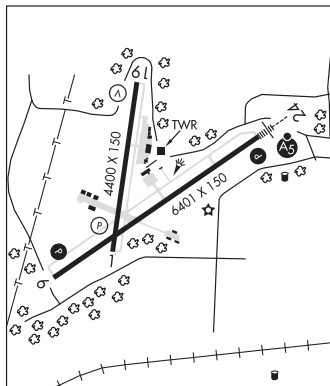
1880/6W.

VOR unusable:

030°-040° byd 15NM blo 8,500'

TAWBA NDB (MHW/LOM) 332 HK N35°47.19' W81°18.32' 243° 4.9 NM to fld. 986/6W. NOTAM FILE HKY.

ILS 108.7 I-HKY Rwy 24. Class OF IE. LOM TAWBA NDB. Unmonitored when ATCT is clsd



WILSON'S (E40) 4 S UTC-5(-4DT) N35°39.12' W81°21.47'

ATLANTA

985 NOTAM FILE RDU

RWY 17-35: 2175X70 (TURF)

RWY 17: Trees.

RWY 35: Trees.

AIRPORT REMARKS: Unattended. Arpt open dalgt hrs only. 130' AGL unmarked p-lines 1000' N and E of rwy. Rwy 35 slopes uphill. Last half of Rwy 17 slopes downhill—thld of Rwy 35 is 6' lower than thld of Rwy 17. Winds permitting take off Rwy 17 and land Rwy 35.

AIRPORT MANAGER: 828-322-6537

COMMUNICATIONS: CTAF 122.9

CLEARANCE DELIVERY PHONE: For CD ctc Atlanta ARTCC at 770-210-7692.

HINSHAW (GREENACRES) (See LIBERTY on page 308)

HOLLY RIDGE/TOPSAIL ISLAND (N21) 1 SE UTC-5(-4DT) N34°29.43' W77°31.93'

CHARLOTTE

48 NOTAM FILE RDU

RWY 14-32: 3591X88 (TURF) RWY LGTS(NSTD) 0.4% up NW

RWY 14: Thld dspcd 982'. P-line.

RWY 32: Thld dspcd 600'. P-line.

SERVICE: LGT Lgtd thld Rwy 14 relocated 925'; Rwy 32 lgt thld relocated 600'; 2000' of Rwy 14-32 usable for gnt ops. Dspcd thlds indicated by end of rwy lgts and yellow cones.

AIRPORT REMARKS: Attended irregularly. Deer on and invof arpt.

AIRPORT MANAGER: 734-516-0330

COMMUNICATIONS: CTAF 122.9

CLEARANCE DELIVERY PHONE: For CD ctc Washington ARTCC at 703-771-3587.