

GRAND JUNCTION RGNL (GJT)(KGJT) 3 NE UTC-7(-6DT) N39°07.35' W108°31.61'

DENVER
H-3E, L-9D
IAP, AD

4861 B Class I, ARFF Index B NOTAM FILE GJT
RWY 11-29: H10503X150 (ASPH-GRVD) S-110, D-180, 2S-175,
2D-260 PCN 57 F/C/X/T HIRL
RWY 11: MALSR. PAPI(P4L)—GA 3.0° TCH 51'. RVR-T 0.4% up.
RWY 29: REIL. VASI(V4L)—GA 3.0° TCH 51'. RVR-R 0.3% down.
RWY 04-22: H5501X75 (ASPH-GRVD) S-26, D-26 MIRL
1.3% up NE
RWY 04: REIL. PAPI(P4L)—GA 3.0° TCH 41'.
RWY 22: REIL.

RUNWAY DECLARED DISTANCE INFORMATION

RWY 04: TORA-5501 TODA-5501 ASDA-5501 LDA-5501
RWY 11: TORA-10503 TODA-10503 ASDA-10503 LDA-10503
RWY 22: TORA-5501 TODA-5501 ASDA-5501 LDA-5501
RWY 29: TORA-10503 TODA-10503 ASDA-10503 LDA-10503

SERVICE: S4 **FUEL** 100LL, JET A **OX** 1, 3 **LGT** After twr clsd
ACTIVATE HIRL Rwy 11-29, MALSR Rwy 11 and twy lights, VASI
Rwy 29—CTAF. Rwy 04 PAPI on continuously only during twr hrs.
Rwy 04 PAPI turned off all other times.

AIRPORT REMARKS: Attended 1230-0700++ . Conditions not monitored
0700-1230Z except by PPR. For fuel after hrs call 970-243-7500.
Rwy 04-22 is CLOSED from 0500-1300Z. Arpt ops number is
970-260-7164. Please call for any NOTAMS or concerns. During
spring, migration of bird flocks on and in/ov arpt. Noise abatement procedures in effect, ctc arpt manager for details at
970-244-9100. ARFF provided only during scheduled Part 121 air carrier ops except by PPR, call arpt manager for
details at 970-244-9100. Liquid oxygen servicing avbl. Twy C1 clsd. Twy C1 and Twy C, 150' either side of the
intersection of Twy C1 not visible from twr. Four helipads located on arpt.

WEATHER DATA SOURCES: AWOS-3 118.55 (970) 245-7881.

COMMUNICATIONS: CTAF 118.1 ATIS 118.55 UNICOM 122.95

RCO 122.6 (DENVER RADIO)

RCO 122.4 (DENVER RADIO)

Ⓡ DENVER APP/DEP CON 119.7 (1300-0500Z)

Ⓡ DENVER CENTER APP/DEP CON 134.5 (0500-1300Z)

TOWER 118.1 (1300-0500Z) GND CON 121.7

VFR ADVSY SVC ctc TOWER

CLEARANCE DELIVERY PHONE: For CD ctc Grand Junction Apch at 303-342-1916, when Apch clsd ctc Denver ARTCC at
303-651-4257.

AIRSPACE: CLASS D svc 1300-0500Z; other times CLASS E.

RADIO AIDS TO NAVIGATION: NOTAM FILE DEN.

(H) VOR/DME 112.4 JNC Chan 71 N39°03.57' W108°47.55' 058° 13.0 NM to fld. 7100/15E.

ILS/DME 110.3 I-GJT Chan 40 Rwy 11. Class ID.

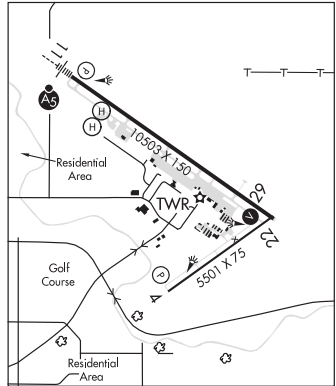
LDA/DME 109.7 I-ACD Chan 34 Rwy 29.

COMM/NAV/WEATHER REMARKS: Emerg frequency 121.5 not avbl at twr.



HELIPAD H1: H40X40 (CONC)

HELIPAD H2: H38X38 (CONC)



GRAND MESA N39°05.30' W108°13.24'

DENVER

RCO 122.2 (DENVER RADIO)

L-9E