

## SALT LAKE CITY

**SALT LAKE CITY INTL** (SLC)(KSLC) P (ANG) 3 W UTC-7(-6DT)

N40°47.30' W111°58.67'

**SALT LAKE CITY**  
H-3D, L-9C, 11D  
IAP, AD

4231 B LRA Class I, ARFF Index E NOTAM FILE SLC

**RWY 16L-34R:** H12002X150 (ASPH-GRVD) S-60, D-200, 2S-175, 2D-350, 2D/2D2-850 HIRL CL

**RWY 16L:** ALSF2. TDZL. PAPI(P4L)—GA 3.0° TCH 70'. RVR-TMR

**RWY 34R:** ALSF2. TDZL. PAPI(P4L)—GA 3.0° TCH 73'. RVR-TMR

**RWY 16R-34L:** H12000X150 (CONC-GRVD) S-60, D-200, 2S-175, 2D-350, 2D/2D2-850 HIRL CL

**RWY 16R:** ALSF2. TDZL. PAPI(P4L)—GA 3.0° TCH 73'. RVR-TMR

**RWY 34L:** ALSF2. TDZL. PAPI(P4L)—GA 3.0° TCH 73'. RVR-TMR

**RWY 17-35:** H9596X150 (ASPH-GRVD) S-60, D-200, 2S-175, 2D-350, 2D/2D2-850 HIRL CL

**RWY 17:** MALS. TDZL. PAPI(P4R)—GA 3.0° TCH 73'. RVR-TR

**RWY 35:** MALS. TDZL. PAPI(P4L)—GA 3.0° TCH 74'. RVR-TR  
Thld dspcd 324'. Antenna.

**RWY 14-32:** H4893X150 (ASPH-GRVD) S-60, D-200, 2D-350, 2D/2D2-850 HIRL

**RWY 14:** PAPI(P4L)—GA 3.0° TCH 40'.

**RWY 32:** PAPI(P4L)—GA 3.0° TCH 41'.

**RUNWAY DECLARED DISTANCE INFORMATION**

**RWY 14:** TORA-4892 TODA-4892 ASDA-4892 LDA-4892

**RWY 16L:** TORA-12002 TODA-12002 ASDA-12002 LDA-12002

**RWY 16R:** TORA-12000 TODA-12000 ASDA-12000 LDA-12000

**RWY 17:** TORA-9597 TODA-9597 ASDA-9597 LDA-9597

**RWY 32:** TORA-4892 TODA-4892 ASDA-4892 LDA-4892

**RWY 34L:** TORA-12000 TODA-12000 ASDA-12000 LDA-12000

**RWY 34R:** TORA-12002 TODA-12002 ASDA-12002 LDA-12002

**RWY 35:** TORA-9597 TODA-9597 ASDA-9597 LDA-9273

**SERVICE:** S4 FUEL 100LL, JET A1+ OX 1, 2, 3, 4 **MILITARY—** JASU (MD-3M) (MA-1A) (M32A-60A) FUEL A++ + avbl at ANG. (NC-100LL, A1+) FLUID LPOX OIL O-148(Mil)

**AIRPORT REMARKS:** Attended continuously. Flocks of birds on and in/ov arpt. Rwy 14-32 CLOSED blw 1200' RVR. Due to t/c volume, lcl dep and arr ops are discouraged and delays can be expd btn 1500-1730Z† and 0130-0300Z†. See current NOTAMs for dates and additional info. Twy Y rstd to wingspans less than 171' between Twy H3 and Twy H4. Spots 20 and 21 to be renamed 2 West on 15 Sep 2020. Spots 22 and 23 to be renamed 1 West on 15 Sep 2020. Special VFR is not recommended at the arpt, if req, exp delays. Use caution for extv paragliding ops in/ov point of the mountain. ASDE-X in use. Operate transponders with altitude reporting mode and ADS-B (if equipped) enabled on all airport surfaces. Use minimum thrust in construction areas. Ctc ground on 123.775 before taxing out of north cargo. Flight Notification Service (ADCUS) avbl.

**AIRPORT MANAGER:** (801) 575-2408

**WEATHER DATA SOURCES:** ASOS 125.625 (801) 328-3567. TDWR.

**COMMUNICATIONS:** D-ATIS 125.625 124.75 801-325-9749 UNICOM 122.95

RCO 122.4 (CEDAR CITY RADIO)

Ⓡ **SALT LAKE CITY APP CON** 120.9 (South of 41° latitude blo 8000') 121.1 (North of 41° latitude blo 8000') 128.6 (110°-160° TCH abv 8,000') 124.9 (300°-340° abv 8000') 128.1 (160°-250° abv 8000') 135.5 (340°-110° abv 8000') 125.7 126.25

Ⓡ **SALT LAKE CITY DEP CON** 120.9 (South of 41° latitude blo 8000') 121.1 (North of 41° latitude blo 8000') 128.6 (110°-160° TCH abv 8,000') 126.25 (250°-300° abv 8000') 128.1 (160°-250° abv 8000') 135.5 (340°-110° abv 8000') 125.7

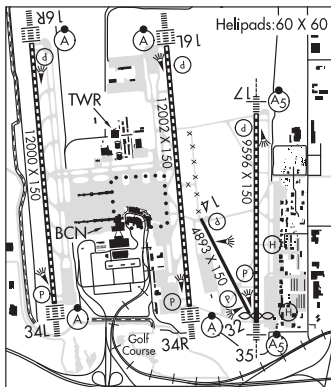
**TOWER** 118.3 (Rwy 17-35 and Rwy 14-32) 119.05 (Rwy 16L-34R) 132.65 (Rwy 16R-34L)

**GND CON** 121.9 (Rwy 17-35 and Rwy 14-32) 123.775 (Rwy 16R-34L and Rwy 16L-34R) **CLNC DEL** 127.3

**PRE-TAXI CLNC** 127.3 **PRE-DEP CLNC** 127.3

**CPDLC** (LOGON KUSA)

**AIRSPACE:** CLASS B See VFR Terminal Area Chart.



CONTINUED ON NEXT PAGE

CONTINUED FROM PRECEDING PAGE

VOR TEST FACILITY (VOT) 111.0

RADIO AIDS TO NAVIGATION: NOTAM FILE SLC.

**WASATCH (H) VORTACW** 116.8 TCH Chan 115 N40°51.02' W111°58.91' 161° 3.7 NM to fld. 4216/16E.

VOR portion unusable:

- 015°-030° blo 26,000'
- 030°-050° byd 20 NM
- 050°-085° byd 20 NM blo 18,000'
- 085°-125° byd 30 NM blo 15,000'
- 360°-015° byd 20 NM blo 17,000'

DME unusable:

- 030°-080° byd 17 NM blo 17,000'
- 030°-080° byd 25 NM
- 080°-140° byd 17 NM blo 15,000'
- 080°-140° byd 25 NM

TACAN AZIMUTH unusable:

030°-140°

TACAN AZIMUTH & DME unusable:

- 185°-220° byd 25 NM blo 16,000'
- 260°-290° byd 25 NM blo 11,000'
- 350°-360° byd 30 NM blo 16,000'
- 360°-030° byd 17 NM blo 16,000'
- 360°-030° byd 30 NM

**ILS/DME** 109.5 I-MOY Chan 32 Rwy 16L. DME also serves ILS Rwy 34R.

**ILS/DME** 111.9 I-UAT Chan 56 Rwy 16R. Class IIIE. DME also serves ILS Rwy 34L.

**ILS/DME** 111.5 I-BNT Chan 52 Rwy 17. Class IIE. DME also serves ILS Rwy 35.

**ILS/DME** 111.9 I-UUH Chan 56 Rwy 34L. Class IIIE. DME also serves ILS Rwy 16R.

**ILS/DME** 109.5 I-SLC Chan 32 Rwy 34R. Class IIIE. DME also serves ILS Rwy 16L.

**ILS/DME** 111.5 I-UTJ Chan 52 Rwy 35. DME also serves ILS Rwy 17

• • • • •  
**HELIPAD HB:** H60X60 (ASPH)

**HELIPAD HF:** H60X60 (ASPH)

**HELIPORT REMARKS:** Helipads B and F lctd on general aviation aprons. Lgtt pole 51' AGL 383' ESE of Helipad B.

**SOUTH VALLEY RGNL** (U42) P (ARNG) 7 SW UTC-7(-6DT) N40°37.17' W111°59.57'

**SALT LAKE CITY**

4606 B NOTAM FILE CDC

H-3D, L-9C, 11D

**RWY 16-34:** H5862X100 (ASPH) S-30, D-43 MIRL

IAP

**RWY 16:** REIL. PAPI(P4L)—GA 3.0° TCH 43'. Rgt tfc.

**RWY 34:** REIL. PAPI(P4L)—GA 3.0° TCH 40'.

**SERVICE:** S4 FUEL 100LL, JET A OX 1, 4 LGT ACTIVATE REIL Rwy 16 and Rwy 34, MIRL Rwy 16-34—CTAF. PAPI Rwy 16 and Rwy 34 opr continuously.

**AIRPORT REMARKS:** Attended 1400-0400Z†. Flocks of birds on and invof arpt. Use caution for extensive paragliding ops invof point of the mountain.

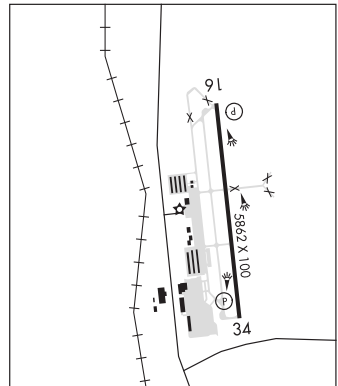
**AIRPORT MANAGER:** (801) 556-4082

**WEATHER DATA SOURCES:** AWOS-3 134.425 (801) 562-0271. addl phone 801-566-2084.

**COMMUNICATIONS:** CTAF/UNICOM 122.7

® SALT LAKE CITY APP/DEP CON 120.9 128.6

CLNC DEL 127.0



CONTINUED ON NEXT PAGE