

PHOENIX SKY HARBOR INTL (PHX)(KPHX) P (ANG) 3 E UTC-7 N33°26.06' W112°00.70'

1135 B TPA—See Remarks LRA Class I, ARFF Index D NOTAM FILE PHX

PHOENIX
H-4J, L-5B, A
IAP, AD

RWY 08-26: H11489X150 (CONC-GRVD) S-30, D-200, 2S-175,

2D-455, 2D/2D2-965 PCN 74 R/B/W/T HIRL

RWY 08: MALSf. PAPI(P4L)—GA 3.0° TCH 69'. Thld dsplcd 898'. Bldg.

RWY 26: REIL. PAPI(P4L)—GA 3.0° TCH 71'. Road. Rgt tfc.

RWY 07L-25R: H10300X150 (CONC-GRVD) S-30, D-235,

2S-175, 2D-435, 2D/2D2-940 PCN 70 R/B/W/T HIRL

RWY 07L: MALSr. PAPI(P4L)—GA 3.0° TCH 73'. RVR-T Pole.

Rgt tfc.

RWY 25R: PAPI(P4L)—GA 3.0° TCH 70'. RVR-R Antenna.

RWY 07R-25L: H7800X150 (CONC-GRVD) S-30, D-200,

2S-175, 2D-400, 2D/2D2-1010 PCN 79 R/B/W/T HIRL

RWY 07R: MALSr. PAPI(P4L)—GA 3.0° TCH 70'. Pole.

RWY 25L: MALSr. PAPI(P4L)—GA 3.0° TCH 66'. Antenna.

RUNWAY DECLARED DISTANCE INFORMATION

RWY 07L:TORA-10300 TODA-10300 ASDA-10300

LDA-10300

RWY 07R:TORA-7800 TODA-7800 ASDA-7800 LDA-7800

RWY 08: TORA-11489 TODA-11489 ASDA-11489

LDA-10591

RWY 25L:TORA-7800 TODA-7800 ASDA-7800 LDA-7800

RWY 25R:TORA-10300 TODA-10300 ASDA-10300 LDA-10300

RWY 26: TORA-11489 TODA-11489 ASDA-11489 LDA-11489

SERVICE: S4 FUEL 100LL, JET A OX 1, 2, 3, 4 **MILITARY—** JASU 1(MD-3M) 1(MA-1A) FUEL J4-Ltd supply (MIL), A+ (C602-273-3770.) (NC-100LL, A) FLUID LPOX LOX OIL O-148 (Mil)

AIRPORT REMARKS: Attended continuously. ASDE-X in use. Operate transponders with altitude reporting mode and ADS-B (if equipped) enabled on all airport surfaces. TPA—2135(1000) lgt acft and non-turbo jets; 2635(1500) heavy acft and turbojets. NS ABTMT procedures are in effect at all times. Twy R and portions of Twy S and Twy T directly blo the twr are non-visible areas from the twr. Twy R overhead train bridge at midpoint provides 82' -4" clnc. Twy F btn twy int G2 and G3 clsd to acft with wingspan greater than 135' due to FAA nav equipment. Twy H5, H6, H7, Twy H btn Twy H4 and Twy H7 clsd to acft wingspan more than 171'. Twys A, A1, A2, A3, A4, A5, A6, A7, A8, A9, A10, A11, A12, F btn G2 and G3, D btn D8 and T, D btn S and R, restricted to a wingspan of less than 135'. Twys C btn S and R, D btn D2 and D7, D3, D6, H btn H4 and H7, H7 restricted to wingspan of less than 171'. No experimental flt of gnd demonstration on arpt without prior written consent from the airside ops. National guard has ltd tran maintenance and parking RON by PPR (602) 302-9119. Acft design group VI opr with PPR. No touch and go or stop and go ops allowed without prior written consent from the airside ops. No engine runs on arpt without prior coord with airside ops. No engine runs on arpt between 2300L-0500L. Intl ldg rgts rqr coordination with arpt ops 48 hrs prior to arrival. International gate use rqr coordination with arpt 48 hours prior to arrival. Review hot spot info on arpt diagram. Additional safety video @ <http://skyharbor.com/business/forpilots/safetyvideoforpilots>. General aviation should ctc arpt mgr 602-273-3300 as to how to view/review arpt video. Rwy status lgts are in opr. For general questions call arpt communication center (602) 273-3302. Ldg fee. Fee for all charters, travel clubs and certain revenue producing acft. Flight Notification Service (ADCUS) available.

AIRPORT MANAGER: 602-306-2500

WEATHER DATA SOURCES: ASOS (602) 231-8557 TDWR.

COMMUNICATIONS: D-ATIS 127.575

RCD 122.2 (PRESCOTT RADIO)

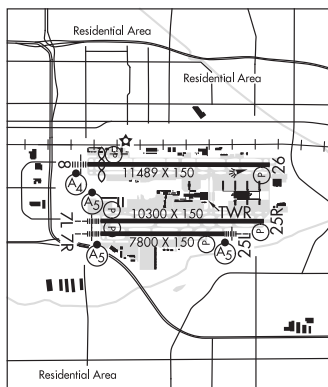
① **APP/DEP CON** 124.1 (119°-138° 7500'-14,500') (192°-263° 7500'-12,500') 119.2 (319°-057° 7500' and abv) 120.7 (319°-057° blo 7500') 123.7 (119°-138° blo 7500') (139°-191° blo 8500') 124.9 (058°-118° blo 10,500') 126.8 (058°-118° 10,500' and abv) (119°-138° abv 14,500') (139°-191° 8500' and above) (192°-263° abv 12,500') 128.65 (340°-079° abv 5,500') 126.375

TOWER 118.7 (Rwy 08-26) 120.9 (Rwy 07R-25L and Rwy 07L-25R) **GND CON** 119.75 (North) 132.55 (South)

CLNC DEL 118.1

CPDLC (LOGON KUSA)

AIRSPACE: CLASS B See VFR Terminal Area Chart.



CONTINUED ON NEXT PAGE

CONTINUED FROM PRECEDING PAGE

VOR TEST FACILITY (VOT) 109.0

RADIO AIDS TO NAVIGATION: NOTAM FILE PRC.

(H) VORTACW 115.6 PXR Chan 103 N33°25.98' W111°58.21' 260° 2.1 NM to fld. 1184/12E.

VOR unusable:

345°-360° byd 33 NM blo 10,000'

TACAN AZIMUTH & DME unusable:

345°-360° byd 33 NM blo 11,000'

VORTAC unusable:

015°-034° byd 33 NM blo 10,000'

090°-100° byd 15 NM blo 8,000'

185°-190° byd 30 NM blo 8,000'

185°-190° byd 38 NM blo 9,000'

190°-230° byd 20 NM blo 10,000'

345°-034° byd 10 NM blo 6,000'

345°-034° byd 20 NM blo 8,000'

360°-015° byd 33 NM blo 11,000'

DME unusable:

215°-315°

ILS/DME 111.5 I-PHX Chan 52 Rwy 07L. Class IE.

ILS/DME 110.75 I-AHA Chan 44(Y) Rwy 07R. Class ID. DME also serves RIG ILS Rwy 25L.

ILS/DME 111.75 I-SYQ Chan 54(Y) Rwy 08. Class IB. LOC unusable 25° left of course. Autopilot coupled apch not applicable blw 1,307' MSL (0.3 NM).

ILS/DME 110.75 I-RJG Chan 44(Y) Rwy 25L. Class IT. DME also serves AHA ILS Rwy 7R.

ILS/DME 111.75 I-CWJ Chan 54(Y) Rwy 26. Class IB.

PHOENIX—MESA GATEWAY (IWA)(KIWA) 20 SE UTC-7 N33°18.47' W111°39.33'

1384 B TPA—See Remarks Class I, ARFF Index C NOTAM FILE IWA MON Airport

RWY 12R-30L: H10401X150 (CONC) S-55, D-95, 2S-120, 2D-185,

2D/2D2-550 PCN 71 R/C/W/T MIRL

RWY 12R: PAPI(P4L)—GA 3.0° TCH 60'. Rgt tfc. 0.3% up.

RWY 30L: PAPI(P4L)—GA 3.0° TCH 60'. 0.4% down.

RWY 12C-30C: H10201X150 (ASPH-CONC) S-55, D-95, 2S-120,

2D-185, 2D/2D2-550 PCN 26 R/D/W/T HIRL

RWY 12C: PAPI(P4L)—GA 3.0° TCH 50'. 0.3% up.

RWY 30C: PAPI(P4L)—GA 3.0° TCH 49'. 0.3% down.

RWY 12L-30R: H9300X150 (CONC) S-75, D-210, 2S-175, 2D-590,

2D/2D2-850 PCN 88 R/C/W/T HIRL

RWY 12L: REIL. PAPI(P4L)—GA 3.0° TCH 74'. 0.3% up.

RWY 30R: REIL. PAPI(P4L)—GA 3.0° TCH 75'. Rgt tfc. 0.3% down.

RUNWAY DECLARED DISTANCE INFORMATION

RWY 12C: TORA-10201 TODA-10201 ASDA-10201 LDA-10201

RWY 12L: TORA-9300 TODA-9300 ASDA-9300 LDA-9300

RWY 12R: TORA-10401 TODA-10401 ASDA-10401 LDA-10401

RWY 30C: TORA-10201 TODA-10201 ASDA-10201 LDA-10201

RWY 30L: TORA-10401 TODA-10401 ASDA-10401 LDA-10401

RWY 30R: TORA-9300 TODA-9300 ASDA-9300 LDA-9300

SERVICE: S1 FUEL 100LL, JET A OX 3, 4 LGT For REIL Rwy 12L and Rwy 30R ctc ATCT. After ATCT clsd, arpt lgts remain on.

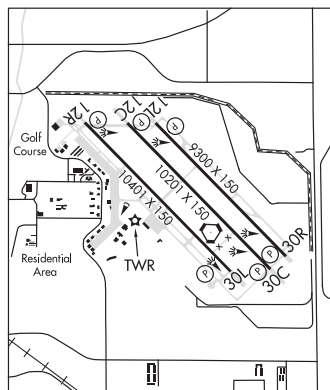
AIRPORT REMARKS: Attended continuously. Fuel avbl continuously ctc 480-988-7700 or 129.875. Be alert for crop dusting activity in/ov arpt. Be alert for crop dusting activity at or below 2000' MSL between 2 and 3 miles on apch for Rwy 30R, Rwy 30L and Rwy 30C. Occasional wildlife in/ov arpt. Rwy 12C first 1000' conc, Rwy 30C first 3500' conc, remaining center portion asph. All non-emergency acft ops of AV-8 model acft, all variations, limited to Rwy 12L-30R. 24-hr prior permission req for unscheduled air carrier ops with more than 30 passenger seats, call arpt ops. Large/heavy acft taxi with inboard engines only. Twy K btn Twy A and Twy B clsd to acft more than 41,000 lbs. Twy V btn Twy A and Twy B clsd to acft more than 300,000 lbs. Twy W between Twy H and Twy V rstd to acft with wingspan less than 135'. Twy T accessible for acft with wingspan between 119' and 170' with wing walkers from Twy W south of Twy V. 7' chain link fence on southern portion of middle ramp. Twy Y rstd to acft with wingspan less than 79'. Voluntary noise abatement procedures in effect. Avoid low overflight of noise sensitive areas surrounding arpt. For noise abatement information ctc arpt 480-988-7637 between 1300-0500Z or 480-988-7700 between 0500-1300Z. TPA—Fixed Wing 2602(1218), Jet 3102(1718), Rotorcraft 2102(718). No ldg fee for U.S. Government owned, non-revenue and flight training acft up to 12,500 lbs.

AIRPORT MANAGER: (480) 988-7708

PHOENIX

H-4J, L-5B, A

IAP, AD



CONTINUED ON NEXT PAGE