

PARLIN FLD (See NEWPORT on page 148)

PEASE N43°05.07' W70°49.92' NOTAM FILE PSM.
(L) VOR/DME 116.5 PSM Chan 112 at Portsmouth Intl at Pease. 108/16W.

NEW YORK

H-11D, 12K, L-32H, 33D

DME unusable:
029°-071° byd 35 NM blo 2,500'
080°-085° byd 35 NM blo 2,500'
115°-120° byd 37 NM blo 2,500'
190°-205° byd 35 NM blo 2,500'
225°-240° byd 25 NM blo 2,500'
VOR unusable:
010°-019° byd 30 NM blo 6,000'
080°-085° byd 35 NM blo 2,500'

PLYMOUTH MUNI (1P1) 3 NW UTC-5(-4DT) N43°46.70' W71°45.23'
506 NOTAM FILE BGR

NEW YORK

RWY 12-30: 2347X90 (TURF)

RWY 12: Road.

RWY 30: Thld dspldc 298'. Road.

AIRPORT REMARKS: Attended irregularly, call 603-536-1731. Wildlife on and invof arprt. Rwy 12-30 soft in spring, not maintained in winter. Rwy 12-30 strip soft in spring. Not maintained in winter but open to ski craft. Please call ahead. Ultralight and paraglider activity on and invof arprt. Heavy powered parachute and weight shift control acft activity in rgt tfc below 400' AGL. Ctc 603-494-1607 for info. Rwy 12-30 has 1161' MSL mountain 1.5 NM north of Rwy 30 left of centerline. Rwy 12-30 edges and ends marked by yellow cones. Rwy 30 dspldc thld marked by three yellow cones aligned perpendicular to each rwy edge. +3' drainage swales located 15' from rwy edge, both sides of rwy beginning at midfield then west for 700'. Numerous non-radio equipment acft operating from afld.

AIRPORT MANAGER: (603) 536-5818

WEATHER DATA SOURCES: AWOS-3 118.45 (603) 536-1698.

COMMUNICATIONS: CTAF/UNICOM 122.8

CLEARANCE DELIVERY PHONE: For CD ctc Boston ARTCC at 603-879-6859.

PORTSMOUTH INTL AT PEASE (PSM)(KPSM) P (ANG) 1 W UTC-5(-4DT) N43°04.68'
W70°49.40'

NEW YORK

H-11D, 12K, L-32H, 33D

100 B TPA—See Remarks LRA Class I, ARFF Index B NOTAM FILE PSM

IAP AD

RWY 16-34: H11322X150 (ASPH-CONC-GRVD) S-75, D-209, 2D-400, 2D/2D2-850 PCN 52 R/C/W/T HIRL
RWY 16: MALSR. PAPI(P4L)—GA 3.0° TCH 70'. RVR-T Thld dspldc 803'. Trees. Rgt tfc. 0.3% down.

RWY 34: MALSR. PAPI(P4L)—GA 3.0° TCH 62'. RVR-T

RUNWAY DECLARED DISTANCE INFORMATION

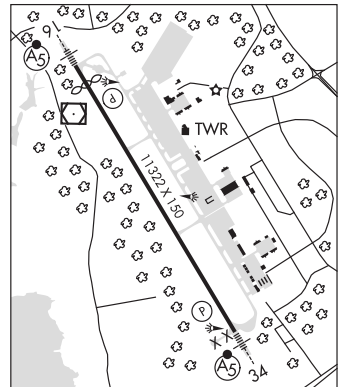
RWY 16: TORA-11321 TODA-11321 ASDA-11321 LDA-10518

RWY 34: TORA-11321 TODA-11321 ASDA-11321 LDA-11321

SERVICE: S4 FUEL 100LL, JET A, J8 OX 3, 4 JASU (AM 32A-86) 9(AM32-95) 5(MA-1A) FUEL J8(Mil) (avbl) at ANG 603-430-2459) A, A+ (C603-812-5502; overnight C603-812-5502) (NC-100LL)
FLUID PRESAIR De-Ice LHOX OIL O-148 SOAP; RQR 48 HR processing time. **TRAN ALERT** Maint and parts supprt extremely ltd. No drag chute repack. Nml hr 1200-2100Z† Mon-Fri, exc hol.

AIRPORT REMARKS: Attended continuously. Birds on and invof arprt.

Turbulence AER 34 in strong cross winds. 1,000' by 200' paved ovrn each end of Rwy 16-34. Rwy 34 is preferred when tail wind component is less than 5 kts. Rwy 16 is preferred for tkf btn 0300-1159Z†, when tail wind component is 5 kts or less. All inbnd acft with hazardous cargo info call twr 60 NM out. Customs 24x7x365 customs clearing availability. Stnd ofc hrs Mon-Fri 1400-2130Z†. Customs must be arranged in advance at 603-422-0910. Intl arr must arrange for gnd handling prior to arr. FBO 603-430-1111/128.825 ARINC. No practice low apch or touch and go ldg 0400-1200Z† for lcl based acft and 0200-1200Z† for tran acft or before 1700Z† Sun for all acft. Dur snow removal ops PPR 15 minutes on 128.4 and no practice low apch or touch and go ldg. On other than a published IAP arr acft should establish themselves on final apch at least 2 NM from the rwy thld at a minimum of 700' MSL. Littlebrook Airpark lctd 052° 4.4 NM, TPA—1130' MSL. Fly downwind leg no closer than 1/2 mile from rwy. Rectangular TPA—1600(1500), overhead TPA—2100(2000), lgt acft 1100(1000). Noise sensitive areas off both end of rwy. Avoid close in base legs/short apchs. On dep maintain rwy hdg to 1100' MSL or the end of the rwy (whichever occurs last) prior to turning. Rwy 16-34 first 1000' both ends conc-grvd, remainder is asph-grvd. No 180° turns for acft over 12,500 lbs GWT on asph portion of Rwy 16-34. Rwy 16-34 double faced distance markers both sides of rwy at 1000' intervals. Rwy 16-34 edge lghts are 24' tall, 85' from cntrln. Caution: Height group 1 WCH 54'. Index E ARFF capability avbl 24/7. 157 ARW is fully opr KC46 Base.



CONTINUED ON NEXT PAGE

NE, 5 NOV 2020 to 31 DEC 2020

NEW HAMPSHIRE

CONTINUED FROM PRECEDING PAGE

AIRPORT MANAGER: 603-433-6536

COMMUNICATIONS: ATIS 132.05 603-334-6070 **UNICOM** 122.95

Ⓡ **BOSTON APP/DEP CON** 125.05

TOWER 128.4 **GND CON** 120.95

AIRSPACE: CLASS D.

RADIO AIDS TO NAVIGATION: NOTAM FILE PSM.

PEASE (L) VORW/DME 116.5 PSM Chan 112 N43°05.07' W70°49.92' at fld. 108/16W.

DME unusable:

029°-071° byd 35 NM blo 2,500'

080°-085° byd 35 NM blo 2,500'

115°-120° byd 37 NM blo 2,500'

190°-205° byd 35 NM blo 2,500'

225°-240° byd 25 NM blo 2,500'

VOR unusable:

010°-019° byd 30 NM blo 6,000'

080°-085° byd 35 NM blo 2,500'

ILS 110.1 I-PGQ Rwy 16. Class IA.

ILS 110.1 I-PSM Rwy 34. Class IB.

PAR

ROCHESTER

SKYHAVEN (DAW)(KDAW) 3 SE UTC-5(-4DT) N43°17.05' W70°55.77'

322 B TPA-1122(800) NOTAM FILE DAW

RWY 15-33: H4201X75 (ASPH) S-30 MIRL 0.5% up SE

RWY 15: REIL. Trees.

RWY 33: ODALS. PAPI(P4L)—GA 3.0° TCH 43'. Rgt tfc.

SERVICE: **FUEL** 100LL **LGT** ACTVT ODAL Rwy 33; REIL Rwy 15; PAPI

Rwy 33; MIRL Rwy 15-33; wind cone lgt—CTAF.

AIRPORT REMARKS: Attended Mon-Fri 1230-2100Z†, exc holidays.

Self-serve 100LL avbl 24 hrs with credit card system. Deer on and invov arpt after sunset. Rwy 33 designated calm wind rwy. Ultralight, antique, and non-radio tfc in good wx. Rotating bcn located 3000' northwest of arpt.

AIRPORT MANAGER: 603-433-6536

WEATHER DATA SOURCES: ASOS 135.275 (603) 332-7814.

COMMUNICATIONS: CTAF/UNICOM 122.7

Ⓡ **BOSTON APP/DEP CON** 125.05

CLEARANCE DELIVERY PHONE: For CD etc Boston Apch at 603-594-5551.

RADIO AIDS TO NAVIGATION: NOTAM FILE PSM.

PEASE (L) VORW/DME 116.5 PSM Chan 112 N43°05.07' W70°49.92' 356° 12.7 NM to fld. 108/16W.

DME unusable:

029°-071° byd 35 NM blo 2,500'

080°-085° byd 35 NM blo 2,500'

115°-120° byd 37 NM blo 2,500'

190°-205° byd 35 NM blo 2,500'

225°-240° byd 25 NM blo 2,500'

VOR unusable:

010°-019° byd 30 NM blo 6,000'

080°-085° byd 35 NM blo 2,500'

ROLLINS NDB (MHW) 260 ESG N43°13.21' W70°49.70' 327° 5.9 NM to fld. 72/16W. NOTAM FILE BGR.

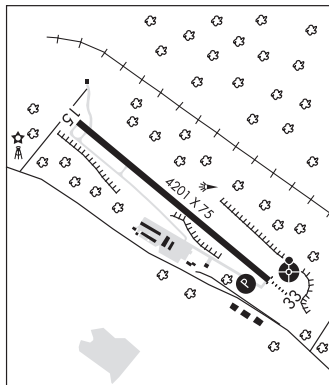
NDB unusable:

Byd 10 NM

NEW YORK

L-32H

IAP



ROLLINS N43°13.21' W70°49.70' NOTAM FILE BGR.

NDB (MHW) 260 ESG 168° 5.2 NM to Littlebrook Air Park. 72/16W.

NDB unusable:

Byd 10 NM

NEW YORK

L-32H, 33D

SKYHAVEN (See ROCHESTER on page 150)