

**BURLINGTON INTL** (BTV)(KBTV) P (ANG ARNG) 3 E UTC-5(-4DT)

N44°28.32' W73°09.20'

**MONTREAL**

335 B AOE LRA Class I, ARFF Index B NOTAM FILE BTV

H-11C, 12K, L-32G

**RWY 15-33:** H8319X150 (ASPH-CONC-GRVD) S-100, D-175, 2S-175, 2D-355 PCN 39 F/A/X/T HIRL

IAP, AD

**RWY 15:** MALS.R. PAPI(P4R)—GA 3.0° TCH 51'. RVR-TR Trees. 0.6% up.

**RWY 33:** MALS.F. PAPI(P4R)—GA 3.2° TCH 53'. RVR-TR Thld dsplcd 500'. Trees.

**RWY 01-19:** H4112X75 (ASPH) S-30, D-40, 2D-60 PCN 23 F/A/X/T MIRL

**RWY 01:** PAPI(P4R)—GA 3.5° TCH 40'. Thld dsplcd 225'. Tree.

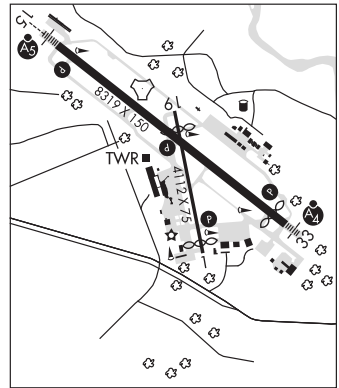
**RWY 19:** PAPI(P4R)—GA 3.0° TCH 42'. Thld dsplcd 500'.

**LAND AND HOLD-SHORT OPERATIONS**

Ldg RWY	HOLD-SHORT POINT	AVBL Ldg DIST
RWY 01	15-33	2600
RWY 15	TXY A	3600
RWY 33	01-19	2900

**RUNWAY DECLARED DISTANCE INFORMATION**

<b>RWY 01:</b> TORA-3611 TODA-3611 ASDA-3611 LDA-3386
<b>RWY 15:</b> TORA-7820 TODA-7820 ASDA-7820 LDA-7820
<b>RWY 19:</b> TORA-4111 TODA-4111 ASDA-4111 LDA-3386
<b>RWY 33:</b> TORA-8320 TODA-8320 ASDA-8320 LDA-7820



**ARRESTING GEAR/SYSTEM**

**RWY 15** TYPE H/BAK-12A (B) 1499 FT.

TYPE H/BAK-12A (B) 1500 FT. **RWY 33**

**SERVICE:** S4 **FUEL** 100LL, JET A **OX** 1, 3 **LGT** Dusk-Dawn. ACTIVATE MALS.R RWY 15, MALS.F RWY 33, PAPI RWY 01, RWY 15, RWY 19 and RWY 33, MIRL RWY 01-19 and HIRL RWY 15-33 and all twys—CTAF. NSTD twy lgts on Twy E. Twy K edge lgt changed to edge reflectors. **MILITARY—A-GEAR** - Type-H BAK-12A(B) apch end RWY 33 lctd 1000' fr displ thld. RWY 15 and RWY 33 A-G housings are non-frangible (26 in abv grd level) lctd 250' fr rwy cntn. **JASU** 5(MD-4) 9(M32A-60) **FUEL** J8(Mil) 100LL, A **FLUID** SP LOX **OIL** O-133-148(Mil) SOAP.

**AIRPORT REMARKS:** Attended continuously. Fixed based opr clsd exc 1 hr PPR 802-863-3626 daily 0700-1400Z†. Fighter acft rstd to tkf window of Mon-Sat 1330-0330Z†, Sun 1700-0330Z†. CAUTION: Generating plant 2 NM from AER 15 produces steam which may obscure visibility on final apch. Birds and deer on and invof arpt. CAUTION: Phase II wildlife act dur migration, Mar-May and Sep-Nov. Air carrier ramp not avbl for pvt/charter acft. Twy A btn Twy G and Twy C clsd to acft wingspan more than 118 ft exc 1 hr PPR 802-316-6014 dly. Twy L clsd to acft over 60,000 lbs. Twys D, E, F and N clsd to civ ops. Twys D, E, F, N, ANG and RNG ramps have unctd vehicle and acft. Twy M avbl for seasonal use, clsd drg winter months. ANG: Opr 1030-2100Z† weekdays, exc hol, clsd Sat-Mon. PPR for fuel/park, ctc ANG ops DSN 220-5213/5920/5267 C802-660-5213. All tran acft enroute Ethan Allen training site and R6501A must stop at AASF for rqr safety brief. ARFF avbl 24 hrs a day. A-Gear Type H/BAK-12A(B) AER 33 lctd 1000' from dsplcd thld. Type H/BAK 12A(B) cable raised by twr on pilot req only. Fighter acft no low apchs. All other mil acft ltd to 2 practice apchs. Do not fly over hospital aprx 1.5 NM west of RWY 15 apch end. RWY 01-19 south of RWY 15-33 int to Twy C, single wheel 100, dual tandem wheel 355, south of Twy C int to south end of rwy, single wheel 30, dual wheel 60. Cold temperature airport. Altitude correction required at or below -10C. Acft turn around clearances on Twy K south of Twy J limited to acft design group II or smaller. Fee for itinerant acft greater than 6000 lbs. Flight Notification Service (ADCUS) avbl.

**AIRPORT MANAGER:** 802-863-2874

**WEATHER DATA SOURCES:** ASOS 123.8 (802) 657-4490.

**COMMUNICATIONS:** ATIS 123.8 (802-657-4424) CTAF 118.3 UNICOM 122.95

RCO 122.2 (BURLINGTON RADIO)

Ⓡ APP/DEP CON 121.1 (1030-0500Z†)

Ⓡ BOSTON CENTER APP/DEP CON 120.35 (0500-1030Z†)

TOWER 118.3 (1030-0500Z†) GND CON 126.3 CLNC DEL 119.15 ANG OPS 134.1 41.2

**CLEARANCE DELIVERY PHONE:** For CD if una to ctc on FSS freq, ctc Boston ARTCC at 603-879-6859.

**AIRSPACE:** CLASS C svc ctc APP CON svc 1030-0500Z†; other times CLASS E.

**VOR TEST FACILITY (VOT)** 109.0

CONTINUED ON NEXT PAGE

## CONTINUED FROM PRECEDING PAGE

**RADIO AIDS TO NAVIGATION:** NOTAM FILE BTV.(L) **VORW/DME** 117.5 BTV Chan 122 N44°23.83' W73°10.96' 031° 4.7 NM to fld. 417/15W.

VOR unusable:

075°-132° byd 30 NM blo 9,000'

133°-165° byd 30 NM blo 8,000'

DME unusable:

075°-132° byd 30 NM blo 9,000'

133°-165° byd 30 NM blo 8,000'

(L) **TACAN** Chan 71 BJA (112.4) N44°28.62' W73°09.41' at fld. 308/15W.

TACAN unusable:

010°-089°

090°-124° blo 11,000'

160°-170° byd 25NM blo 7,000'

**HERRO NDB (LOMW)** 382 BT N44°31.94' W73°14.97' 146° 5.5 NM to fld. 130/15W.**ILS/DME** 110.3 I-BTV Chan 40 Rwy 15. Class IB. LOM HERRO NDB. Unmonitored when ATCT clsd. LOC unusable byd 28° right of course.**ILS/DME** 110.3 I-VOE Chan 40 Rwy 33. Class IA. LOC unusable byd 10 NM blo 2,700' LOC unusable byd 13 NM blo 4,700' Unmonitored when ATCT clsd.**CALEDONIA CO** (See LYNDONVILLE on page 329)**DEERFIELD VALLEY RGNL** (See WEST DOVER on page 333)**EDWARD F KNAPP STATE** (See BARRE/MONTPELIER on page 326)**FRANKLIN CO STATE** (See HIGHGATE on page 328)**HARTNESS STATE (SPRINGFIELD)** (See SPRINGFIELD on page 332)**HERRO** N44°31.94' W73°14.97' NOTAM FILE BTV.

MONTREAL

**NDB (LOMW)** 382 BT 146° 5.5 NM to Burlington Intl. 130/15W.**HIGHGATE****FRANKLIN CO STATE** (FSO)(KFSO) 3 W UTC-5(-4DT) N44°56.42' W73°05.85'

MONTREAL

228 B LRA NOTAM FILE BTV

L-32G

**RWY 01-19:** H3001X60 (ASPH) S-12.5 MIRL

IAP

**RWY 01:** REIL. PAPI(P2L)—GA 4.0° TCH 35'. Trees.**RWY 19:** REIL. Trees.**SERVICE:** S4 FUEL 100LL, JET A1+ LGT ACTIVATE REIL Rwy 01 and Rwy 19; PAPI Rwy 01; MIRL Rwy 01-19—CTAF. Rwy 01 Visual Glideslope Indicator and glidepath not coincident.**AIRPORT REMARKS:** Attended Nov-Mar 1330-2200Z†, Apr-Oct 1230-2200Z†. After hrs self-serve fuel kiosk does not accept Mastercard. Seagulls invof arpt. Military equipment may be near the rwy. Turf ldg area east side of Rwy 01-19, no simultaneous ops. Rwy conditions may not be monitored or reported when the arpt is unattended.**AIRPORT MANAGER:** 802-868-2822**WEATHER DATA SOURCES:** AWOS-3 119.025 (802) 868-9941.**COMMUNICATIONS:** CTAF/UNICOM 122.8

® BURLINGTON APP/DEP CON 121.1 (1030-0500Z†)

® BOSTON CENTER APP/DEP CON 120.35 (0500-1030Z†)

**CLEARANCE DELIVERY PHONE:** For CD if GCO una ctc Boston ARTCC at 603-879-6859.**RADIO AIDS TO NAVIGATION:****ST JEAN (H) VORW/DME** 115.8 YJN Chan 105 N45°15.35' W73°19.28' 169° 21.2 NM to fld. 230/16W.**COMM/NAV/WEATHER REMARKS:** YJN VORTAC is in Canada—check Montreal QB (YUL) NOTAMS for outages or restrictions.