

FORT MEADE(ODENTON)

TIPTON (FME)(KFME) 1 SW UTC-5(-4DT) N39°05.12' W76°45.56'

150 B TPA—1000(850) NOTAM FILE FME

RWY 10-28: H3000X75 (ASPH) MIRL 1.2% up E

RWY 10: REIL. PAPI(P2L)—GA 4.0° TCH 51'. Trees. Rgt tfc.

RWY 28: REIL. PAPI(P2L)—GA 4.0° TCH 57'. Trees.

SERVICE: S2 **FUEL** 100LL, JET A+ **LGT**ACTVT REIL Rwy 10 and Rwy 28; MIRL Rwy 10-28—CTAF. Rwy 10-28

REIL/MIRL on photocell during dalgt hrs. Rwy 10 VGSJ unusbl 8 degs left and right of course. Rwy 28 VGSJ unusbl 5 degs left (trees) and 8 degs right of course.

AIRPORT REMARKS: Attended 1330-2300Z†. 24 hr self svc 100LL avbl with credit card. 24 hr self svc Jet A+ avbl with credit card. Deer on rwy and twys. Be alert for numerous BWI turbojet arrivals/departures in the area. Fly tfc pattern south of the fld to avoid BWI Class B Airspace. Remain clear of BWI Class B Airspace until clnc is obtained. PAEW adjacent all twys and Rwy 10-28 indef.

AIRPORT MANAGER: 410-222-6815

WEATHER DATA SOURCES: AWOS-3 123.925.

COMMUNICATIONS: CTAF/UNICOM 123.05

Ⓡ **POTOMAC APP/DEP CON** 119.7

CLEARANCE DELIVERY PHONE: For CD ctc Potomac Apch at 866-429-5882.

RADIO AIDS TO NAVIGATION: NOTAM FILE BWI.

BALTIMORE (L) VORTACW 115.1 BAL Chan 98 N39°10.26' W76°39.68' 233° 6.9 NM to fld. 150/11W.

TACAN AZIMUTH & DME unusable:

133°-155° byd 20 NM blo 10,000'

300°-349° byd 35 NM

TACAN DME unusable:

133°-155° byd 36 NM

VOR unusable:

133°-155° byd 20 NM blo 10,000'

197°-217° byd 17 NM

282°-292°

TACAN AZIMUTH unusable:

029°-042° byd 30 NM

180°-190° byd 17 NM

WASHINGTON

COPTER

L-29E, 34F, 36I, A

IAP

FREDERICK MUNI (FDK)(KFDD) 0 E UTC-5(-4DT) N39°25.05' W77°22.46'

306 B TPA—See Remarks NOTAM FILE FDK

RWY 05-23: H5219X100 (ASPH-GRVD) S-60 HIRL 0.4% up SW

RWY 05: REIL. PAPI(P4L)—GA 3.0° TCH 40'. Trees. Rgt tfc.

RWY 23: ODALS. REIL. PAPI(P4L)—GA 3.0° TCH 40'. Trees.

RWY 12-30: H3599X75 (ASPH) MIRL 0.3% up NW

RWY 12: REIL. PAPI(P2L)—GA 3.0° TCH 45'. Trees. Rgt tfc.

RWY 30: REIL. PAPI(P2L)—GA 4.0° TCH 37'. Trees.

SERVICE: S4 **FUEL** 100LL, JET A **OX** 3, 4 **LGT**ACTVT ODALS Rwy 23;

REIL Rwy 05, Rwy 23, Rwy 12 and Rwy 30; PAPI Rwy 05 and Rwy 23;

HIRL Rwy 05-23; MIRL Rwy 12-30—CTAF.

AIRPORT REMARKS: Attended 1200-0200Z†. Arprt unattended Christmas Day. Fuel self serve 100LL avbl H24 with credit card. Rwy 23 -15 ft depression 400 ft long; 246 ft L of cntrln; parallel to apch end. TPA—1106 (800) helicopters, 1306(1000) single and lgt twins, 1806 (1500) large twins and jets.

AIRPORT MANAGER: 301-600-2201

WEATHER DATA SOURCES: AWOS-3 124.875 (301) 600-1457.

COMMUNICATIONS: CTAF 132.4 ATIS 124.875 UNICOM 122.95

Ⓡ **POTOMAC APP/DEP CON** 125.525

TOWER 132.4 (1200-0200Z†) **GND CON** 121.975 **CLNC DEL** 121.975

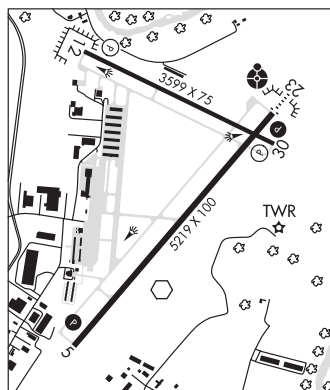
126.9 (When twr clsd)

AIRSPACE: CLASS D svc 1200-0200Z†; other times CLASS E.

WASHINGTON

H-10H, 12I, L-29E, 34F, A

IAP, AD



CONTINUED ON NEXT PAGE

CONTINUED FROM PRECEDING PAGE

RADIO AIDS TO NAVIGATION: NOTAM FILE DCA.

WESTMINSTER (H) VORTAC 117.9 EMI Chan 126 N39°29.70' W76°58.71' 264° 19.0 NM to fld. 820/8W.

VOR portion unusable:
 128°-161° byd 20 NM blo 6,500'
 221°-231° blo 4,500'
 221°-231° byd 13 NM blo 16,000'
 301°-334° blo 5,500'

TACAN AZIMUTH & DME unusable:
 281°-055° byd 35 NM blo 3,000'

(T) VORW 109.0 FDK N39°24.73' W77°22.51' at fld. 303/8W. NOTAM FILE FDK.

VOR unusable:
 150°-160° byd 10 NM blo 3,000'
 180°-190°

ILS 110.3 I-FDK Rwy 23. Class IT.

COMM/NAV/WEATHER REMARKS: Potomac Cinc Del 126.9 or 866-429-5882 (When twr clsd)

FREEWAY (See BOWIE on page 89)

FRIENDLY

POTOMAC AIRFIELD (VKX)(KVKK) 0 NE UTC-5(-4DT) N38°44.92' W76°57.36'

WASHINGTON

118 B NOTAM FILE DCA

COPTER

RWY 06-24: H2665X40 (ASPH) MIRL 0.3% up NE

L-29E, 34E, 36I, A

RWY 06: PAPI(P2L)—GA 5.0° TCH 19'. Thld dsplcd 376'. Trees.

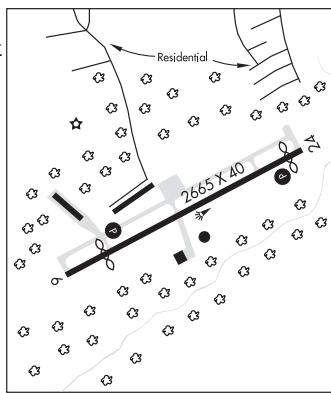
IAP

RWY 24: PAPI(P2L)—GA 5.5° TCH 20'. Thld dsplcd 90'. Trees. Rgt tfc.

SERVICE: S4 **FUEL** 100LL **LGT** REIL Rwy 06 and Rwy 24 opr SS-SR.

MIRL Rwy 06-24 SS-SR; ACTIVATE PAPI Rwy 06 and Rwy 24—CTAF.

AIRPORT REMARKS: Attended 1200-0300Z†. Arpt within Flight Restricted Zone. Expect 24 hr security from police, mil and others on the gnd and in the air. Unlimited vehicle access to acft movement areas. NS ABTMT procedures, avoid tkf 0300-1200Z†. Rotating bcn located 1000' north of arpt. Visitors please tune 122.85 for parking instructions and gnd svcs. Rentals avbl 301-292-9700. Rwy 06 PAPI unusable 3° right of course.



AIRPORT MANAGER: 301-248-5720

COMMUNICATIONS: CTAF/AUNICOM 122.8

(R) POTOMAC APP/DEP CON 124.7 125.65 (DC-FRZ)

CLEARANCE DELIVERY PHONE: For CD ctc Potomac Apch at 866-599-3874.

RADIO AIDS TO NAVIGATION: NOTAM FILE ADW.

ANDREWS (L) VORTACW 113.1 ADW Chan 78 N38°48.43'

W76°51.98' 240° 5.5 NM to fld. 263/10W.

VOR unusable:
 035°-045° blo 2,500'
 089°-182°
 183°-227° blo 4,000'
 230°-236° byd 20 NM
 237°-270°
 333°-048°

TACAN AZIMUTH unusable:

035°-045° blo 2,500'
 220°-280°
 295°-310°

DME unusable:

035°-045° blo 2,500'
 220°-280°