

CASPER

CASPER/NATRONA CO INTL (CPR)(KCPR) 7 NW UTC-7(-6DT) N42°54.35' W106°27.82'

CHEYENNE

5344 B LRA Class I, ARFF Index B NOTAM FILE CPR

H-3F, 5A, L-11E, 12F

RWY 03-21: H10165X150 (ASPH-GRVD) S-130, D-170, 2D-270

IAP, AD

PCN 46 F/B/X/T HIRL

RWY 03: MALSR. PAPI(P4R)—GA 3.0° TCH 50'. RVR-T

RWY 21: REIL. VASI(V4L)—GA 3.0° TCH 56'. RVR-R

RWY 08-26: H8679X150 (ASPH-GRVD) S-85, D-140, 2D-260

PCN 44 F/B/X/T HIRL

RWY 08: MALSR. VASI(V4R)—GA 3.0° TCH 103'. RVR-T

RWY 26: REIL. PAPI(P4R)—GA 3.0° TCH 50'. RVR-R 0.4% up.

RUNWAY DECLARED DISTANCE INFORMATION

RWY 03: TORA-10165 TODA-10165 ASDA-10165 LDA-10165

RWY 08: TORA-8679 TODA-8679 ASDA-8679 LDA-8679

RWY 21: TORA-10165 TODA-10165 ASDA-10165 LDA-10165

RWY 26: TORA-8679 TODA-8679 ASDA-8679 LDA-8679

SERVICE: S4 FUEL 100LL, JET A OX 1, 2, 3, 4 LGT When twr clsd
ACTIVATE HIRL Rwy 03-21 and Rwy 08-26, MALSR Rwy 03 and Rwy
08 and twy lgts—CTAF.

AIRPORT REMARKS: Attended continuously. Emerg pwr avbl Rwy 08-26 and
Rwy 03-21. Rwy 08-26 and Rwy 03-21 have lgtd distance remaining
signs. Rwys clsd to FSL, TGL, and PLA aircraft more than 250,000 lbs
except for 4 hrs PPR 307-995-3950. 225' crane 1 NM northeast of
arpt. Flight Notification Service (ADCUS) available.

AIRPORT MANAGER: 307-472-6688

WEATHER DATA SOURCES: ASOS (307) 472-8960 LAWRS 1200-0400Z‡.

COMMUNICATIONS: CTAF 118.3 ATIS 126.15 UNICOM 122.95

RCO 122.6 (CASPER RADIO)

Ⓡ APP/DEP CON 120.65 (1200-0400Z‡)

Ⓡ DENVER CENTER APP/DEP CON 135.6 (0400-1200Z‡)

TOWER 118.3 (1200-0400Z‡) GND CON 121.9 CLNC DEL 121.9

CLEARANCE DELIVERY PHONE: For CD ctc Casper Apch at 307-472-8940, when Apch clsd ctc Denver ARTCC at 303-651-4257.

AIRSPACE: CLASS D svc 1200-0400Z‡; other times CLASS E.

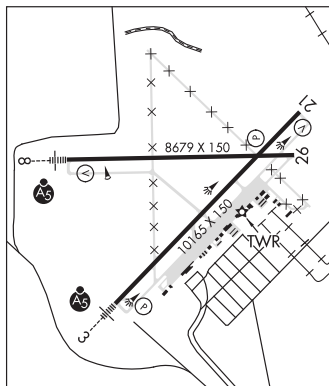
RADIO AIDS TO NAVIGATION: NOTAM FILE CPR.

MUDDY MOUNTAIN (H) VOR/DME 116.2 DDY Chan 109 N43°05.45' W106°16.62' 205° 13.8 NM to fld.
5863/12E.

ILS 111.3 I-SYD Rwy 03. Class IB. Syd LOC is unmonitored from 0400-1200Z‡ daily.

ILS 110.3 I-CPR Rwy 08. Class 1E.

COMM/NAV/WEATHER REMARKS: Emerg freq 121.5 not avbl at twr.



HARFORD FLD (HAD)(KHAD) 5 N UTC-7(-6DT) N42°55.46' W106°18.57'

CHEYENNE

5370 NOTAM FILE CPR

RWY 07-25: 3810X30 (DIRT)

RWY 07: Bldg.

AIRPORT REMARKS: Unattended. Antelope on and invof arpt. Rwy 07-25 has +2-4' berms 40' either side of cntrln. Line of
sight problem btn Rwy 07 and Rwy 25, Rwy 25 slopes uphill first 510'. Abandoned arpt 1.5 miles west.

AIRPORT MANAGER: 307-262-0606

COMMUNICATIONS: CTAF 122.9

CLEARANCE DELIVERY PHONE: For CD ctc Casper Apch at 307-472-8940, when Apch clsd ctc Denver ARTCC at 303-651-4257.

CASPER N43°07.28' W106°20.73'

CHEYENNE

RCO 122.6 (CASPER RADIO)

L-11E, 12F

CENTRAL WYOMING RGNL (See RIVERTON on page 255)

CHEROKEE N41°45.34' W107°34.92' NOTAM FILE CPR.

CHEYENNE

(H) VOR/DME 115.0 CKW Chan 97 065° 17.4 NM to Rawlins Muni/Harvey Fld. 7050/15E.

H-3E, L-11E

RCO 122.4 (CASPER RADIO)