

THREE CREEK**MURPHY HOT SPRINGS** (3UØ) 9 W UTC-7(-6DT) N42°01.41' W115°20.13'

SALT LAKE CITY

5829 NOTAM FILE BOI

RWY 01-19: 5250X120 (TURF) 1.2% up S**RWY 01:** Fence.**RWY 19:** Fence.**AIRPORT REMARKS:** Unattended. No telephone avbl at arpt. No winter maint. No line of sight between rwy ends. Recommend land Rwy 19 and depart Rwy 01 when wind conditions permit. Rwy soft in spring and when wet. Rwy 01-19 edges and thlds marked with white rock.**AIRPORT MANAGER:** 208-334-8775**COMMUNICATIONS:** CTAF 122.9**CLEARANCE DELIVERY PHONE:** For CD ctc Salt Lake ARTCC at 801-320-2568.**TWIN BRIDGES** (See KETCHUM on page 52)**TWIN FALLS****JOSLIN FLD — MAGIC VALLEY RGNL** (TWF)(KTWF) 4 S UTC-7(-6DT) N42°28.91' W114°29.27'

SALT LAKE CITY

4154 B Class I, ARFF Index A NOTAM FILE TWF MON Airport

H-3D, L-11C

RWY 08-26: H8703X150 (ASP-PFC) S-75, D-200, 2S-175, 2D-250

IAF, AD

PCN 46 F/D/W/T HIRL

RWY 08: REIL. VASI(V4L)—GA 3.0° TCH 58'.**RWY 26:** MALSR. PAPI(P4L)—GA 3.0° TCH 55'.**RWY 12-30:** H3224X75 (ASP) S-19 PCN 8 F/D/Z/T 1.3% up SE**RWY 12:** Trees.**LAND AND HOLD—SHORT OPERATIONS**

LDG RWY	HOLD—SHORT POINT	AVBL LDG DIST
RWY 08	12-30	4500
RWY 12	08-26	2750
RWY 26	12-30	3600

SERVICE: S4 FUEL 100LL, JET A1+ OX 1, 3 LGT When twr clsd

ACTIVATE HIRL Rwy 08-26, MALSR Rwy 26, REIL Rwy 08—CTAF.

AIRPORT REMARKS: Attended 1330-0300Z†. Additional fuel svc fee btn 0300-1330Z†, call 208-733-5920 or 539-4034 for info.

Parachute Jumping. No line of sight btn AER 26 and AER 12. PPR for unscheduled air carrier ops with more than 30 pax seats call arpt mgr 208-733-5215. Rwy 12-30 and Twy G, Twy H, Twy J and Twy K non-air carrier movement area. Ldg fee for all FAR Part 121, 135 ops and general aviation Part 91 acft greater than 12,500 lbs max GWT. For info ctc arpt mgr 208-733-5215.

AIRPORT MANAGER: 208-733-5215**WEATHER DATA SOURCES:** ASOS 135.025 (208) 733-1878. SAWRS/WSO/AG.**COMMUNICATIONS:** CTAF 118.2 UNICOM 122.95**TWIN FALLS RCO** 122.25 (BOISE RADIO)**TWIN FALLS APP/DEP CON** 126.7 (1300-0400Z†)® **SALT LAKE CENTER APP/DEP CON** 118.05 (0400-1300Z†)**TWIN FALLS TOWER** 118.2 (1300-0400Z†) **GND CON** 121.7 **CLNC DEL** 123.65**CLEARANCE DELIVERY PHONE:** For CD if una to ctc on FSS freq, ctc Salt Lake ARTCC at 801-320-2568.**AIRSPACE:** CLASS D svc 1300-0400Z†; other times CLASS E.**RADIO AIDS TO NAVIGATION:** NOTAM FILE TWF.**TWIN FALLS (L) VORTACW** 115.8 TWF Chan 105 N42°28.79' W114°29.37' at fld. 4140/118E.

VOR portion unusable:

115°-160° byd 30 NM blo 11,000'

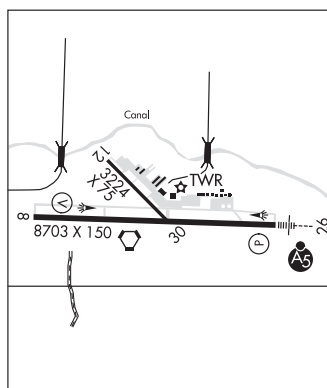
115°-160° byd 33 NM blo 12,000'

TACAN AZIMUTH & DME unusable:

105°-160° byd 20 NM blo 15,000'

STRIK NDB (LOM) 389 TW N42°28.72' W114°21.27' 259° 5.9 NM to fld.

ILS 108.3 I-TWF Rwy 26. Class IE. LOM STRIK NDB. Unmonitored when ATCT clsd.

COMM/NAV/WEATHER REMARKS: Frequency 121.5 not avbl at twr.**TYHEE** N42°57.83' W112°30.98' NOTAM FILE PIH.

SALT LAKE CITY

NDB (LOMW) 383 PI 210° 4.8 NM to Pocatello Rgnl. 4462/17E.

L-11C

UPPER LOON CREEK USFS (See CHALLIS on page 40)**W E RANCH** (See THATCHER on page 71)