

ASHEVILLE RGNL (AVL)(KAVL) 9 S UTC-5(-4DT) N35°26.17' W82°32.52'
 2164 B Class I, ARFF Index B NOTAM FILE AVL
RWY 17-35: H8001X150 (ASPH-GRVD) S-120, D-219, 2D-404,
 2D/2D2-837 PCN 54 F/B/X/U HIRL 0.7% up N
RWY 17: MALS.R. REIL. PAPI(P4R)—GA 3.0° TCH 55'. RVR-R Stack.
RWY 35: MALS.R. REIL. PAPI(P4L)—GA 3.0° TCH 53'. RVR-T Rgt
 ttc.

ATLANTA
H-9B, 12G, L-25C
IAP, AD

RUNWAY DECLARED DISTANCE INFORMATION

RWY 17: TORA-7001 TODA-7001 ASDA-6601 LDA-6601
RWY 35: TORA-7001 TODA-7001 ASDA-7001 LDA-7001

SERVICE: S2 FUEL 100LL, JET A OX3 LGT HIRL off when twr clsd,
 to ACTIVATE or incr ints—CTAF.

AIRPORT REMARKS: Attended continuously. Rwy 16-34 CLOSED, portions
 avbl for taxi to and from Rwy 17-35. Flocks of migratory birds on
 and in/ovf arpt. PPR for unscheduled air carrier opr with more than
 30 pax seats 0400-1200Z†, call arpt comm 828-684-4577. For the
 Asheville Rgnl arpt acft diversions emerg contingency plan and
 fac constraints ctc arpt admin at 828-684-2226.

AIRPORT MANAGER: (828) 684-2226

WEATHER DATA SOURCES: ASOS (828) 681-0131 ASOS wind unreliable
 when atct clsd. LLWAS.

COMMUNICATIONS: CTAF 121.1 ATIS 120.2 UNICOM 122.95

Ⓡ **APP/DEP CON** 124.65 (160°-339°) 125.8 (340°-159°) (1130-0400Z†)

ATLANTA CENTER APP/DEP CON 132.625 (160°-339°) (0400-1130Z†)

TOWER 121.1 (1130-0400Z†) **GND CON** 121.9

CLEARANCE DELIVERY PHONE: When ATCT clsd, for CD ctc Atlanta ARTCC at 770-210-7692.

AIRSPACE: CLASS C svc ctc **APP CON** svc 1130-0400Z† other times CLASS G.

RADIO AIDS TO NAVIGATION: NOTAM FILE RDU.

SUGARLOAF MOUNTAIN (L) VORTACW 112.2 SUG Chan 59 N35°24.39' W82°16.12' 280° 13.5 NM to fld.
 3970/2W.

BROAD RIVER NDB (HW) 379 BRA N35°16.37' W82°28.26' 347° 10.4 NM to fld. 2149/7W. NOTAM FILE AVL.
 NDB unmonitored when asheville ATCT closed.

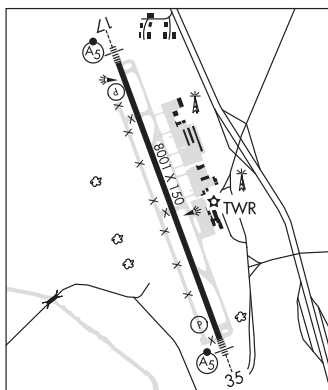
KEANS NDB (LOMW) 357 IM N35°31.97' W82°35.25' 166° 6.2 NM to fld. 2124/7W. NOTAM FILE AVL.

ILS/DME 110.9 I-IMO Chan 46 Rwy 17. Class IA. LOM KEANS NDB. LOC unmonitored when ATCT closed. LOC
 unusable byd 20° right of course. LOC unusable within 0.20 NM fm threshold.

ILS/DME 110.5 I-AVL Chan 42 Rwy 35. Class IA. Unmonitored when ATCT closed. LOC unusable 28° left and 27°
 right of course. LOC unusable inside 0.2NM inbd.

ASR (1130-0400Z†)

COMM/NAV/WEATHER REMARKS: Comm unavbl blo 6,000' except by RDU Radio on 122.1R (SUGARLOAF RCO) when AVL Apch
 Con clsd. Right traffic when twr clsd.



AVERY CO(MORRISON FLD) (See SPRUCE PINE on page 338)

BARRETT'S MOUNTAIN N35°52.13' W81°14.43' NOTAM FILE RDU.
(L) VOR/DME 110.8 BZM Chan 45 230° 10.6 NM to Hickory Rgnl. 1880/6W.
 VOR unusable:
 030°-040° byd 15NM blo 8,500'
RCO 122.1R 110.8T (RALEIGH RADIO)

CHARLOTTE
L-25D