

## SANTA ANA

**JOHN WAYNE AIRPORT—ORANGE CO** (SNA)(KSNA) 4 S UTC-8(-7DT) N33°40.54' W117°52.09' **LOS ANGELES**  
 56 B TPA—See Remarks Class I, ARFF Index C NOTAM FILE SNA MON Airport **COPTER**  
**RWY 02L-20R:** H5701X150 (ASPH-GRVD) S-70, D-200, 2S-121, H-4I, L-3E, 4H, A  
 2D-300 PCN 89 F/B/X/T HIRL 0.3% up S **IAP, AD**

**RWY 02L:** PAPI(P4L)—GA 3.0° TCH 72'. RVR-R

**RWY 20R:** MALSR. PAPI(P4L)—GA 3.0° TCH 63'. RVR-T Rgt tfc.

**RWY 02R-20L:** H2887X75 (ASPH-GRVD) S-25, D-60 PCN 72 F/B/X/T  
 MIRL 0.4% up S

**RWY 02R:** Rgt tfc.

**RWY 20L:** REIL. PAPI(P4L)—GA 3.0° TCH 26'. Bldg.

**RUNWAY DECLARED DISTANCE INFORMATION**

**RWY 02L:**TORA-5701 TODA-5701 ASDA-5701 LDA-5701

**RWY 02R:**TORA-2887 TODA-2887 ASDA-2887 LDA-2887

**RWY 20L:**TORA-2887 TODA-2887 ASDA-2887 LDA-2887

**RWY 20R:**TORA-5701 TODA-5701 ASDA-5701 LDA-5701

**SERVICE:** S4 FUEL 100LL, JET A OX 3, 4 LGT When twr clsd  
 ACTIVATE MALSR Rwy 20R and PAPI Rwy 02L, and Rwy 20R—CTAF.

**AIRPORT REMARKS:** Attended continuously. Rwy 02R-20L CLOSED when twr is clsd. Be alert to birds on and in/ovf arpt. Noise abatement procedures in effect contact arpt noise office 949-252-5185. Maintain at or above 300' AGL until established on final. VFR Acft: to avoid overflight of Rwy 20R, Rwy 20L arrival fly final at 15° angle to rwy, Rwy 20L departures turn 15° left at departure end of rwy. To avoid overflights of Rwy 02L, Rwy 02R departures turn 15° right at freeway. ASDE-X in use. Operate transponders with altitude reporting mode and ADS-B (if equipped) enabled on all airport surfaces. Rwy 02L-20R TPA—1056 (1000) small acft, 1556 (1500) turbine acft over 12500 lbs. Rwy 02R-20L TPA—856 (800) small single engine acft, 1056 (1000) twin engine acft. FBO general aviation aprons limited to max gwt of 100,000 lbs (dual gear) and with wingspans less than 100'. General aviation acft prohibited from using any portion of the air carrier commercial ramp. When twr clsd no local training or touch and go operations. Overnight tiedown fee.

**AIRPORT MANAGER:** 949-252-5171

**WEATHER DATA SOURCES:** ASOS (714) 424-0590 LAWRS (1400-0700Z‡)

**COMMUNICATIONS:** CTAF 126.8 D-ATIS 126.0 714-546-2279 UNICOM 122.95

**SANTA ANA RCO** 122.45 (RIVERSIDE RADIO)

Ⓡ **SOCAL APP CON** 121.3

**TOWER** 119.9 (Rwy 02R-20L) 126.8 (Rwy 02L-20R) 128.35 (1415-0700Z‡)

**GND CON** 120.8 (East) 132.25 (West) **CLNC DEL** 118.0 121.85

Ⓡ **SOCAL DEP CON** 128.1 124.1

**CPDLC** (LOGON KUSA)

**CLEARANCE DELIVERY PHONE:** For CD when ATCT clsd ctc SoCal Apch at 800-448-3724.

**AIRSPACE:** CLASS C svc ctc **APP CON** svc 1415-0700Z‡ other times CLASS G.

**VOR TEST FACILITY (VOT)** 110.0

**RADIO AIDS TO NAVIGATION:** NOTAM FILE SLI.

**SEAL BEACH (L) VORTACW** 115.7 SLI Chan 104 N33°47.00' W118°03.29' 110° 11.3 NM to fld. 22/15E.

VOR unusable:

125°-180° byd 30 NM blo 4,000'

TACAN AZIMUTH unusable:

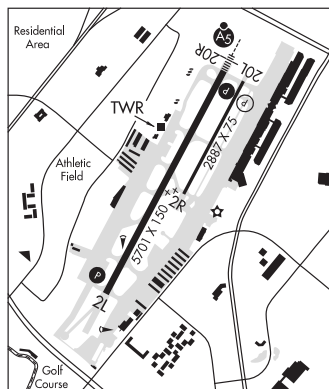
125°-195° byd 20 NM blo 5,000'

DME unusable:

125°-195° byd 20 NM blo 5,000'

**ILS/DME** 111.75 I-SNA Chan 54(Y) Rwy 20R. Class IE. Unmonitored when ATCT closed.

**LDA/DME** 108.3 I-OJW Chan 20 Rwy 20X. LDA unmonitored when ATCT clsd. Ry 20X created to support ojw LDA associated with SNAILS Rwy 20R.



**SANTA BARBARA** HUG N34°22.60' W120°10.11' /152  
 AWOS-3 119.625 (805) 961-4256 - offshore harmony platform

**LOS ANGELES**