

MONTROSE RGNL (MTJ)(KMTJ) 1 NW UTC-7(-6DT) N38°30.59' W107°53.66'

DENVER
H-3E, L-9E
IAP, AD

5759 B Class I, ARFF Index B NOTAM FILE MTJ
RWY 17-35: H1000X150 (ASPH-GRVD) S-75, D-190, 2D-265
PCN 61 F/C/X/T HIRL

RWY 17: MALSR. PAPI(P4L)—GA 3.0° TCH 55'. 0.5% up.
RWY 35: REIL. PAPI(P4L)—GA 3.0° TCH 41'. 0.3% down.
RWY 13-31: H7510X100 (ASPH-GRVD) S-65, D-90, 2D-150
PCN 13 F/D/X/T HIRL 0.8 % up SE
RWY 13: REIL. VASI(V4L)—GA 3.0° TCH 43'. Tree.
RWY 31: REIL. VASI(V4L)—GA 3.0° TCH 43'.

RUNWAY DECLARED DISTANCE INFORMATION

RWY 13: TORA-7510 TODA-7510 ASDA-7510 LDA-7510
RWY 17: TORA-10000 TODA-10000 ASDA-10000 LDA-10000
RWY 31: TORA-7510 TODA-7510 ASDA-7510 LDA-7510
RWY 35: TORA-10000 TODA-10000 ASDA-10000 LDA-10000

SERVICE: S4 FUEL 100LL, JET A+ OX1, 3 LGT ACTIVATE HIRL Rwy 17-35 and Rwy 13-31, MALSR Rwy 17, and REIL Rwy 13, Rwy 31 and Rwy 35-CTAF.

AIRPORT REMARKS: Attended Apr 1-Dec 15 1230-0400Z†, Dec 16-Mar 31 1200-0400Z†. Migratory birds and wildlife on and in/ov arpt. Unscheduled air carrier ops with more than 30 pax seats rqr 24 hr PPR call arpt mgr 970-249-3433. Air carrier acft reqd to access terminal ramp via Twy C, outbd tfc Twy D. Ramp connector adjacent to T hangar row clsd indef. Twy E, E6 clsd exc acft with wingspan less than 78'. Twy B ltd to single wheel acft max 80,000 lbs, double wheel acft max 105,000 lbs, and double tandem acft max 170,000 lbs. Preferred tkf Rwy 31 and Rwy 35 and ldg Rwy 13 and Rwy 17. Rwy 17-35 preferred rwy for acft with apch speed greater than 121 kts.

AIRPORT MANAGER: 970-249-3433

WEATHER DATA SOURCES: ASOS 135,225 (970) 249-1534.

COMMUNICATIONS: CTAF/UNICOM 122.8

RCO 122.65 (DENVER RADIO)

Ⓡ DENVER CENTER APP/DEP CON 127.1

CLEARANCE DELIVERY PHONE: For CD if una to ctc on FSS freq, ctc Denver ARTCC at 303-651-4257.

AIRSPACE: CLASS E svc 1300-0400Z†; other times CLASS G.

RADIO AIDS TO NAVIGATION: NOTAM FILE MTJ.

(H) VORW/DME 117.1 MTJ Chan 118 N38°30.39' W107°53.96' at fld. 5713/12E. vDME unmonitored.

DME unusable:

011°-090° byd 26NM blo 15,000'

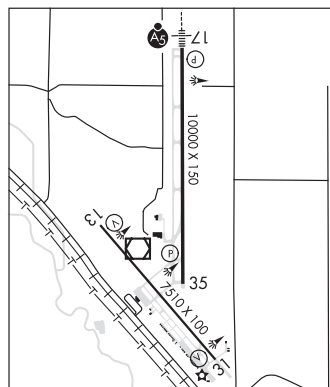
190°-250° byd 25 NM blo 15,000'

VOR unusable:

060°-090° byd 26NM blo 16,000'

190°-250° byd 25 NM blo 15,000'

ILS 111.3 I-MTJ Rwy 17. Unmonitored.



MONUMENT HILL MNH N39°13.13' W104°38.43' /7060

DENVER
L-10F

AWOS-3 134.375 (303) 648-3479

NORTH FORK VALLEY (See PAONIA on page 290)

NORTHERN COLORADO RGNL (See FORT COLLINS/LOVELAND on page 276)

NUCLA

HOPKINS FLD (AIB)(KAIB) 2 SW UTC-7(-6DT) N38°14.33' W108°33.80'

DENVER
L-9D
IAP

5940 B NOTAM FILE DEN

RWY 05-23: H4600X75 (ASPH) S-9 MIRL 0.9% up NE

RWY 11-29: 4000X80 (TURF-DIRT) 0.8% up E

RWY 11: Road.

RWY 29: Fence.

SERVICE: FUEL 100LL, JET A

AIRPORT REMARKS: Unattended. Fuel self svc avbl 24 hrs. 40' p-lines in hangar area. Migratory birds, wildlife and deer on or in/ov arpt. Multiple large rodent holes.

AIRPORT MANAGER: 970-864-7111

WEATHER DATA SOURCES: AWOS-3 132.525 (970) 864-2325.

COMMUNICATIONS: CTAF/UNICOM 122.8

DENVER CENTER APP/DEP CON 125.35

CLEARANCE DELIVERY PHONE: For CD ctc Denver ARTCC at 303-651-4257.

RADIO AIDS TO NAVIGATION: NOTAM FILE DEN.

DOVE CREEK (H) VORTACW 114.6 DVC Chan 93 N37°48.52' W108°55.88' 020° 31.1 NM to fld. 6990/14E.