

SALT LAKE CITY

SALT LAKE CITY INTL (SLC)(KSLC) P (ANG) 3 W UTC-7(-6DT)

N40°47.30' W111°58.67'

SALT LAKE CITY

4231 B LRA Class I, ARFF Index E NOTAM FILE SLC

H-3D, L-9C, 11D

RWY 16L-34R: H12002X150 (ASPH-GRVD) S-60, D-200, 2S-175,

IAP, AD

2D-350, 2D/2D2-850 HIRL CL

RWY 16L: ALSF2. TDZL. PAPI(P4L)—GA 3.0° TCH 70'. RVR-TMR

RWY 34R: ALSF2. TDZL. PAPI(P4L)—GA 3.0° TCH 73'. RVR-TMR

RWY 16R-34L: H12000X150 (CONC-GRVD) S-60, D-200, 2S-175,

2D-350, 2D/2D2-850 HIRL CL

RWY 16R: ALSF2. TDZL. PAPI(P4L)—GA 3.0° TCH 73'. RVR-TMR

RWY 34L: ALSF2. TDZL. PAPI(P4L)—GA 3.0° TCH 73'. RVR-TMR

RWY 17-35: H9596X150 (ASPH-GRVD) S-60, D-200, 2S-175,

2D-350, 2D/2D2-850 HIRL CL

RWY 17: MALS. TDZL. PAPI(P4R)—GA 3.0° TCH 73'. RVR-TR

RWY 35: MALS. TDZL. PAPI(P4L)—GA 3.0° TCH 74'. RVR-TR

Thld displcd 324'. Antenna.

RWY 14-32: H4893X150 (ASPH-GRVD) S-60, D-200, 2D-350,

2D/2D2-850 HIRL

RWY 14: PAPI(P4L)—GA 3.0° TCH 40'.

RWY 32: PAPI(P4L)—GA 3.0° TCH 41'.

RUNWAY DECLARED DISTANCE INFORMATION

RWY 14: TORA-4892 TODA-4892 ASDA-4892 LDA-4892

RWY 16L: TORA-12002 TODA-12002 ASDA-12002 LDA-12002

RWY 16R: TORA-12000 TODA-12000 ASDA-12000 LDA-12000

RWY 17: TORA-9597 TODA-9597 ASDA-9597 LDA-9597

RWY 32: TORA-4892 TODA-4892 ASDA-4892 LDA-4892

RWY 34L: TORA-12000 TODA-12000 ASDA-12000 LDA-12000

RWY 34R: TORA-12002 TODA-12002 ASDA-12002 LDA-12002

RWY 35: TORA-9597 TODA-9597 ASDA-9597 LDA-9273

SERVICE: S4 FUEL 100LL, JET A1+ OX 1, 2, 3, 4 MILITARY— JASU (MD-3M) (MA-1A) (M32A-60A) FUEL A++ FLUID

LPOX OIL O-148(Mil)

AIRPORT REMARKS: Attended continuously. Flocks of birds on and in/ovf arpt. Rwy 14-32 CLOSED blw 1200' RVR. Due to t/c volume, lcl dep and arr ops are discouraged and delays can be expd btn 1500-1730Z± and 0130-0300Z±. See current NOTAMs for dates and additional info. Twy Y rstd to wingspans less than 171' between Twy H3 and Twy H4. Spots 20 and 21 to be renamed 2 West on 15 Sep 2020. Spots 22 and 23 to be renamed 1 West on 15 Sep 2020. Special VFR is not recommended at the arpt, if req, exp delays. Use caution for extv paragliding ops in/ovf point of the mountain.

ASDE-X in use. Operate transponders with altitude reporting mode and ADS-B (if equipped) enabled on all airport surfaces. Use minimum thrust in construction areas. Ctc ground on 123.775 before taxing out of north cargo. Flight Notification Service (ADCUS) avbl.

AIRPORT MANAGER: (801) 575-2408

WEATHER DATA SOURCES: ASOS 125.625 (801) 328-3567. TDWR.

COMMUNICATIONS: D-ATIS 125.625 124.75 801-325-9749 UNICOM 122.95

RCO 122.4 (CEDAR CITY RADIO)

Ⓡ SALT LAKE CITY APP CON 120.9 (South of 41° latitude blo 8000') 121.1 (North of 41° latitude blo 8000') 128.6 (110°-160° TCH abv 8,000') 124.9 (300°-340° abv 8000') 128.1 (160°-250° abv 8000') 135.5 (340°-110° abv 8000') 125.7 126.25

Ⓡ SALT LAKE CITY DEP CON 120.9 (South of 41° latitude blo 8000') 121.1 (North of 41° latitude blo 8000') 128.6 (110°-160° TCH abv 8,000') 126.25 (250°-300° abv 8000') 128.1 (160°-250° abv 8000') 135.5 (340°-110° abv 8000') 125.7

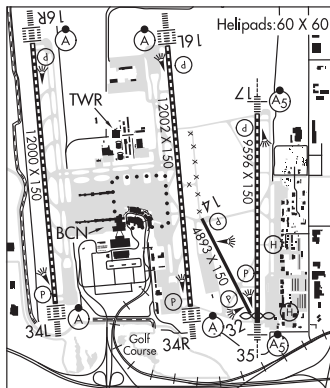
TOWER 118.3 (Rwy 17-35 and Rwy 14-32) 119.05 (Rwy 16L-34R) 132.65 (Rwy 16R-34L)

GND CON 121.9 (Rwy 17-35 and Rwy 14-32) 123.775 (Rwy 16R-34L and Rwy 16L-34R) CLNC DEL 127.3

PRE-TAXI CLNC 127.3 PRE-DEP CLNC 127.3

CPDLC (LOGON KUSA)

AIRSPACE: CLASS B See VFR Terminal Area Chart.



CONTINUED ON NEXT PAGE

CONTINUED FROM PRECEDING PAGE

VOR TEST FACILITY (VOT) 111.0

RADIO AIDS TO NAVIGATION: NOTAM FILE SLC.

WASATCH (H) VORTACW 116.8 TCH Chan 115 N40°51.02' W111°58.91' 161° 3.7 NM to fld. 4216/16E.

VOR portion unusable:

- 015°-030° blo 26,000'
- 030°-050° byd 20 NM
- 050°-085° byd 20 NM blo 18,000'
- 085°-125° byd 30 NM blo 15,000'
- 360°-015° byd 20 NM blo 17,000'

DME unusable:

- 030°-080° byd 17 NM blo 17,000'
- 030°-080° byd 25 NM
- 080°-140° byd 17 NM blo 15,000'
- 080°-140° byd 25 NM

TACAN AZIMUTH unusable:

030°-140°

TACAN AZIMUTH & DME unusable:

- 185°-220° byd 25 NM blo 16,000'
- 260°-290° byd 25 NM blo 11,000'
- 350°-360° byd 30 NM blo 16,000'
- 360°-030° byd 17 NM blo 16,000'
- 360°-030° byd 30 NM

- ILS/DME 109.5 I-MOY Chan 32 Rwy 16L. DME also serves ILS Rwy 34R.
- ILS/DME 111.9 I-UAT Chan 56 Rwy 16R. Class IIIE. DME also serves ILS Rwy 34L.
- ILS/DME 111.5 I-BNT Chan 52 Rwy 17. Class IIE. DME also serves ILS Rwy 35.
- ILS/DME 111.9 I-UUH Chan 56 Rwy 34L. Class IIIE. DME also serves ILS Rwy 16R.
- ILS/DME 109.5 I-SLC Chan 32 Rwy 34R. Class IIIE. DME also serves ILS Rwy 16L.
- ILS/DME 111.5 I-UTJ Chan 52 Rwy 35. DME also serves ILS Rwy 17

HELIPAD HB: H60X60 (ASPH)

HELIPAD HF: H60X60 (ASPH)

HELIPORT REMARKS: Helipads B and F lctd on general aviation aprons. Lgtd pole 51' AGL 383' ESE of Helipad B.

SOUTH VALLEY RGNL (U42) P (ARNG) 7 SW UTC-7(-6DT) N40°37.17' W111°59.57'

SALT LAKE CITY
H-3D, L-9C, 11D
IAP

4606 B NOTAM FILE CDC

RWY 16-34: H5862X100 (ASPH) S-30, D-43 MIRL

RWY 16: REIL. PAPI(P4L)—GA 3.0° TCH 43'. Rgt tfc.

RWY 34: REIL. PAPI(P4L)—GA 3.0° TCH 40'.

SERVICE: S4 FUEL 100LL, JET A OX 1, 4 LGT ACTIVATE REIL Rwy 16 and Rwy 34, MIRL Rwy 16-34—CTAF. PAPI Rwy 16 and Rwy 34 opr continuously.

AIRPORT REMARKS: Attended 1400-0400Z±. Flocks of birds on and in/ov arpt. Use caution for extensive paragliding ops in/ov point of the mountain.

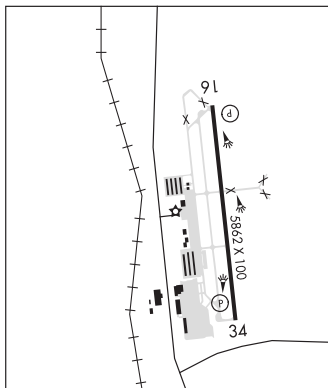
AIRPORT MANAGER: (801) 556-4082

WEATHER DATA SOURCES: AWOS-3 134.425 (801) 562-0271. addl phone 801-566-2084.

COMMUNICATIONS: CTAF/UNICOM 122.7

® SALT LAKE CITY APP/DEP CON 120.9 128.6

CLNC DEL 127.0



CONTINUED ON NEXT PAGE