

## CHICAGO/AURORA

**AURORA MUNI** (ARR)(KARR) 38 W UTC-6(-5DT) N41°46.32' W88°28.54'

**CHICAGO**  
H-5E, L-28H, A  
IAP, AD

712 B NOTAM FILE ARR

**RWY 09-27:** H6501X100 (CONC-GRVD) S-30, D-130, 2S-165 HIRL

**RWY 09:** MALSR. PAPI(P4L)—GA 3.0° TCH 45'.

**RWY 27:** REIL. PAPI(P4L)—GA 3.0° TCH 45'.

**RWY 15-33:** H5503X100 (CONC-GRVD) D-130, 2S-165 HIRL

**RWY 15:** REIL. PAPI(P4L)—GA 3.0° TCH 34'. Tree.

**RWY 33:** MALSR. PAPI(P4L)—GA 3.0° TCH 48'. Tree.

**RWY 18-36:** H3198X75 (ASPH) S-30 MIRL

**RWY 18:** REIL. PAPI(P4L)—GA 3.0° TCH 30'. Pole.

**RWY 36:** REIL. VASI(V4L)—GA 3.0° TCH 34'. Tree.

**SERVICE:** S4 FUEL 100, JET A1 OX 1, 2, 3, 4 LGT ACTIVATE MALSR

Rwy 09, Rwy 33, REIL Rwy 18, 36, 15 and Rwy 27; twy lgts—CTAF.

When twr clsd HIRL Rwy 15-33 and Rwy 09-27 and MIRL Rwy 18-36 preset low ints: to increase ints and actvt—CTAF.

**AIRPORT REMARKS:** Attended 1200-0600Z†. Rwy 18-36 sfc several large cracks and vegetative growth. Seasonal crops in Part 77 surfaces Rwy 09-27 and 15-33.

**AIRPORT MANAGER:** (630) 256-3120

**WEATHER DATA SOURCES:** ASOS (630) 466-5622 LAWRS.

**COMMUNICATIONS:** CTAF 120.6 ATIS 125.85 UNICOM 122.95 123.5

JOLIET RCO 122.1R 112.3T (KANKAKEE RADIO)

JOLIET RCO 122.5 (KANKAKEE RADIO)

® CHICAGO APP/DEP CON 133.5

TOWER 120.6 (1300-0300Z†) GND CON 121.7 CLNC DEL 121.7 (When twr clsd)

**AIRSPACE:** CLASS D svc 1300-0300Z†; other times CLASS G.

**RADIO AIDS TO NAVIGATION:** NOTAM FILE DPA.

DUPAGE (L) VORW/DME 108.4 DPA Chan 21 N41°53.42' W88°21.01' 216° 9.1 NM to fld. 802/2E.

VOR unusable:

290°-310° byd 35 NM

DME unusable:

290°-340° byd 35 NM

JOLIET (H) VOR/DME 112.3 JOT Chan 70 N41°32.79' W88°19.10' 330° 15.3 NM to fld. 591/2E. NOTAM FILE JOT.

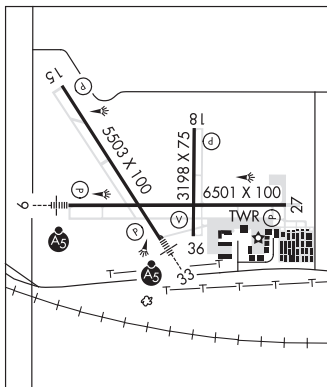
VOR unusable:

030°-040° byd 25 NM

ILS 108.9 I-ARR Rwy 09.

LOC/DME 111.15 I-ROF Chan 48(Y) Rwy 33.

**COMM/NAV/WEATHER REMARKS:** Emerg frequency 121.5 not avbl at twr.



## CHICAGO/LAKE IN THE HILLS

**LAKE IN THE HILLS** (3CK) 38 NW UTC-6(-5DT) N42°12.41' W88°19.38'

**CHICAGO**  
COPTER  
L-28H, A  
IAP

887 B NOTAM FILE IKK

**RWY 08-26:** H3801X50 (ASPH) S-12.5, D-38 LIRL

**RWY 08:** PAPI(P2L)—GA 3.0° TCH 20'. Thld displcd 360'.

**RWY 26:** PAPI(P2R)—GA 3.0° TCH 20'. Thld displcd 382'.

**SERVICE:** S4 FUEL 100LL, JET A OX 1, 2, 3, 4 LGT ACTIVATE LIRL

Rwy 08-26—CTAF.

**AIRPORT REMARKS:** Attended May-Oct Mon-Sun 1400-2300Z†, Nov-Apr Mon-Sun 1500-2200Z†.

**AIRPORT MANAGER:** 815-479-7960

**COMMUNICATIONS:** CTAF/UNICOM 123.05

® CHICAGO APP/DEP CON 120.55

CLEARANCE DELIVERY PHONE: For CD ctc Chicago Apch at 847-289-0926.

**RADIO AIDS TO NAVIGATION:** NOTAM FILE IKK.

NORTHBROOK (H) VORW/DME 113.0 OBK Chan 77 N42°13.28' W87°57.10' 269° 16.6 NM to fld. 707/2W.

DME unusable:

215°-330° byd 35 NM blo 3,000'

**COMM/NAV/WEATHER REMARKS:** For VFR wx advisory 5 clicks CTAF. Phone 815-444-1729.

