

CABOOL MEML (TVB)(KTVB) 1 NE UTC-6(-5DT) N37°07.95' W92°05.04'

KANSAS CITY
L-16G
IAP

1220 B NOTAM FILE COU

RWY 03-21: H3002X60 (ASPH-AFSC) S-4 MIRL 0.4% up SW

RWY 03: Thld dspcd 190'. Road. Rgt tfc.

RWY 21: Trees.

SERVICE: FUEL 100LL, MOGAS LGT Dusk-Dawn. ACTIVATE MIRL Rwy 03-21—CTAF. Bcn located 0.9 of mile W/NW of arpt on top of water twr.

AIRPORT REMARKS: Unattended. For fuel call phone numbers posted at terminal. Ultralight activity on and invof arpt. Birds invof rwy. Rwy 03-21 markings faded.

AIRPORT MANAGER: 417-962-3136

COMMUNICATIONS: CTAF 122.9

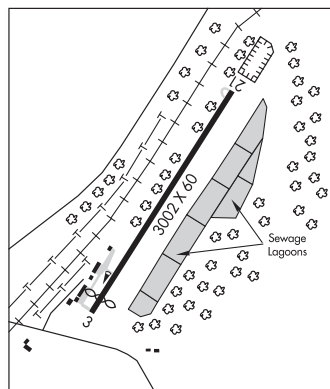
KANSAS CITY CENTER APP/DEP CON 128.35

CLEARANCE DELIVERY PHONE: For CD ctc Kansas City ARTCC at 913-254-8508.

RADIO AIDS TO NAVIGATION: NOTAM FILE COU.

MAPLES (L) VORTAC 113.4 MAP Chan 81 N37°35.45'

W91°47.31' 201° 30.9 NM to fld. 1374/6E.



CAHOKIA/ST LOUIS

ST LOUIS DOWNTOWN (CPS)(KCPS) 1 E UTC-6(-5DT) N38°34.22' W90°09.31'

ST LOUIS
H-5D, L-27C, A
IAP, AD

413 B LRA ARFF Index—See Remarks NOTAM FILE CPS

RWY 12R-30L: H7002X150 (ASPH-GRVD) S-65, D-95, 2S-160,

2D-175 PCN 48 F/D/X/T HIRL

RWY 12R: REIL. PAPI(P4L)—GA 3.0° TCH 49'. Tree. Rgt tfc.

RWY 30L: MALSR. PAPI(P4L)—GA 3.0° TCH 53'. Pole.

RWY 12L-30R: H5301X75 (CONC) S-30, D-30 PCN 10 F/D/X/T MIRL

RWY 12L: REIL. Tree.

RWY 30R: REIL. Tree. Rgt tfc.

RWY 05-23: H2799X75 (ASPH) S-12 PCN 11 R/C/W/T MIRL

RWY 05: Tree.

RWY 23: Tower.

RUNWAY DECLARED DISTANCE INFORMATION

RWY 05: TORA-2799 TODA-2799 ASDA-2799 LDA-2799

RWY 12L: TORA-5300 TODA-5300 ASDA-5300 LDA-5300

RWY 12R: TORA-7002 TODA-7002 ASDA-7002 LDA-7002

RWY 23: TORA-2799 TODA-2799 ASDA-2799 LDA-2799

RWY 30L: TORA-7002 TODA-7002 ASDA-7002 LDA-7002

RWY 30R: TORA-5300 TODA-5300 ASDA-5300 LDA-5300

SERVICE: S4 FUEL 100LL, JET A OX 1 LGT ACTIVATE MALSR Rwy 30L when twr clsd—CTAF. REIL Rwy 30R—CTAF. HIRL Rwy 12R-30L preset on med ints when twr clsd. MIRL Rwy 12L-30R not avbl when twr clsd.

AIRPORT REMARKS: Attended continuously. Rwy 12R-30L 2D-200 with PPR. Migratory waterfowl on and invof arpt. Be alert: intensive student training and helicopter operations. Class IV, ARFF Index A. Clsd to sched ACR opr grt than 9 pax seats. Unsched ACR ops grt than 30 pax seats rqr 12 hr PPR. Mon-Sun (1300-0300Z) other times by req 618-337-6060. After hrs ctc 618-646-8263. Rwy 05-23 not avbl for air carrier ops except taxi. Rwy 12L-30R not avb for air carrier ops except taxi ops. All twys exc Twy A4 and Twy B4 PPR actv over 120,000 lbs. Twy B2 south 400' clsd between Twy B and Twy B1.

AIRPORT MANAGER: 618-337-6060

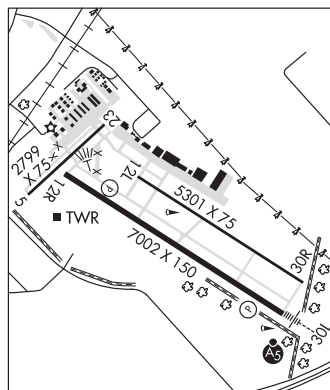
WEATHER DATA SOURCES: ASOS (618) 332-0001 LAWRs.

COMMUNICATIONS: CTAF 119.925 ATIS 121.45 UNICOM 122.95

Ⓡ **SAINT LOUIS APP/DEP CON** 123.7

DOWNTOWN TOWER 119.925 (1230-0400Z) GND CON 121.8 CLNC DEL 118.275 (121.8 when twr clsd)

AIRSPACE: CLASS D svc 1230-0400Z; other times CLASS G.



CONTINUED ON NEXT PAGE

CONTINUED FROM PRECEDING PAGE

RADIO AIDS TO NAVIGATION: NOTAM FILE STL.

TROY (L) VORTACW 116.0 TOY Chan 107 N38°44.35' W89°55.12' 224° 15.0 NM to fld. 576/4E.

TACAN AZIMUTH unusable:

255°-270°

300°-310°

ACORE NDB (LOMW) 350 CP N38°31.19' W90°03.56' 304° 5.4 NM to fld. 550/OE. NOTAM FILE CPS.

ILS 109.1 I-CPS Rwy 30L. Class IA. LOM ACORE NDB. LOC unmonitored when ATCT closed. LOC unusable byd 14° rgt of course. OM unmonitored when ATCT closed.

COMM/NAV/WEATHER REMARKS: Emerg frequency 121.5 not avbl at twr.

CAMDENTON MEML—LAKE RGNL (OZS)(KOZS) 3 SE UTC-6(-5DT) N37°58.44' W92°41.47'

KANSAS CITY

1062 B NOTAM FILE OZS

L-16G

RWY 15-33: H4000X75 (ASPH) S-12.5 MIRL

RWY 15: REIL. PAPI(P4L)—GA 3.0° TCH 41'.

RWY 33: REIL. PAPI(P4L)—GA 3.0° TCH 40'.

SERVICE: S4 FUEL 100LL, JET A+ OX 4 LGT ACTIVATE MIRL Rwy 15-33, REIL Rwy 15 and Rwy 33, PAPI Rwy 15 and Rwy 33—CTAF.

AIRPORT REMARKS: Attended Oct-Mar 1400-2300Z†, Apr-Sep 1400-0100Z†. When landing Rwy 33, be alert to possible low level wind shear when winds are out of east or west. Ultralight activity on and in/ov arpt. Wildlife on and in/ov arpt.

AIRPORT MANAGER: 573-346-0300

WEATHER DATA SOURCES: AWOS-3 120.225 (573) 317-0412.

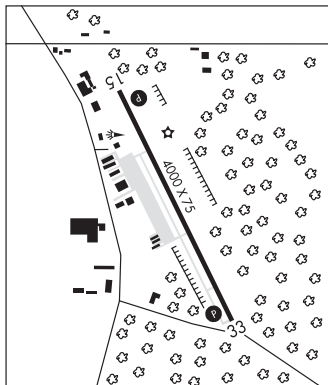
COMMUNICATIONS: CTAF/UNICOM 122.8

Ⓡ MIZZOU APP/DEP CON 124.1

CLEARANCE DELIVERY PHONE: For CD ctc Mizzou Apch at 417-868-5620/5619.

RADIO AIDS TO NAVIGATION: NOTAM FILE COU.

SUNSHINE (L) VORW/DME 108.4 SHY Chan 21 N38°02.44' W92°36.14' 227° 5.8 NM to fld. 932/OE.



CAMERON MEML (EZZ)(KEZZ) 2 SW UTC-6(-5DT) N39°43.65' W94°16.58'

KANSAS CITY

1040 B NOTAM FILE COU

L-27A

RWY 17-35: H4000X75 (CONC) S-30 MIRL 0.4% up N

RWY 17: REIL. PAPI(P4L)—GA 3.0° TCH 21'.

RWY 35: REIL. PAPI(P4L)—GA 3.0° TCH 22'.

SERVICE: FUEL 100LL LGT MIRL Rwy 17-35, PAPI Rwy 17 and Rwy 35, REIL Rwy 17 and Rwy 35 opr dusk-0600Z†, after 0600Z† ACTIVATE and incr ints—CTAF.

AIRPORT REMARKS: Attended Mon-Fri 1500-2300Z†, Sat irregularly. Automated self fuel avbl 24 hrs.

AIRPORT MANAGER: 816-632-2423

WEATHER DATA SOURCES: AWOS-3PT 121.05 (816) 933-2124.

COMMUNICATIONS: CTAF/UNICOM 122.8

Ⓡ KANSAS CITY APP/DEP CON 118.4

CLNC DEL 121.6

CLEARANCE DELIVERY PHONE: For CD ctc Kansas City Apch at 816-329-2710.

RADIO AIDS TO NAVIGATION: NOTAM FILE STJ.

ST JOSEPH (H) VORTACW 115.5 STJ Chan 102 N39°57.63' W94°55.51' 107° 33.1 NM to fld. 1159/8E.

