

**NEWARK LIBERTY INTL** (EWR)(KEWR) 3 S UTC-5(-4DT) N40°41.55' W74°10.12'

17 B LRA Class I, ARFF Index E NOTAM FILE EWR

**NEW YORK**

**COPTER**

H-101, 121, L-33A, 34H

IAP, AD

**RWY 04L-22R:** H11000X150 (ASPH-CONC-GRVD) D-210, 2D-520, 2D/2D2-1000 PCN 96 R/B/X/T HIRL CL

**RWY 04L:** MALSR. TDZL. PAPI(P4L)—GA 3.1° TCH 77'. RVR-TMR Thld dspclcd 2540'. Tree.

**RWY 22R:** MALSR. TDZL. REIL. PAPI(P4L)—GA 3.1° TCH 70'. RVR-TMR Thld dspclcd 1440'. Pole.

**RWY 04R-22L:** H10000X150 (ASPH-GRVD) D-210, 2D-520, 2D/2D2-1000 PCN 96 R/B/W/T HIRL CL

**RWY 04R:** ALSF2. TDZL. PAPI(P4L)—GA 2.95° TCH 71'. RVR-TMR Thld dspclcd 1190'. Pole.

**RWY 22L:** ALSF2. TDZL. PAPI(P4L)—GA 3.0° TCH 60'. RVR-TMR Thld dspclcd 1793'. Antenna.

**RWY 11-29:** H6726X150 (ASPH-GRVD) D-210, 2D-520, 2D/2D2-1000 PCN 96 R/B/W/T HIRL CL

**RWY 11:** TDZL. REIL. VASI(V4L)—GA 3.08° TCH 58'. Bldg.

**RWY 29:** TDZL. REIL. PAPI(P4R)—GA 3.0° TCH 60'. Thld dspclcd 224'. Sign.

**LAND AND HOLD-SHORT OPERATIONS**

| LDG RWY | HOLD-SHORT POINT | AVBL LDG DIST |
|---------|------------------|---------------|
| RWY 04L | 11-29            | 7750          |
| RWY 04R | 11-29            | 8100          |
| RWY 11  | 04R-22L          | 5700          |

**RUNWAY DECLARED DISTANCE INFORMATION**

**RWY 04L:**TORA-11000 TODA-11000 ASDA-11000 LDA-8460

**RWY 04R:**TORA-10000 TODA-10000 ASDA-10000 LDA-8810

**RWY 11:** TORA-6726 TODA-6726 ASDA-6726 LDA-6726

**RWY 22L:**TORA-10000 TODA-10000 ASDA-10000 LDA-8207

**RWY 22R:**TORA-11000 TODA-11000 ASDA-11000 LDA-9560

**RWY 29:** TORA-6726 TODA-6726 ASDA-6726 LDA-6502

**ARRESTING GEAR/SYSTEM**

**RWY 11:** EMAS

**RWY 29:** EMAS

**SERVICE:** S4 FUEL 100LL, JET A OX3 LGT Rwy status lgts in opr. Rwy 29 PAPI unusable 5° left of centerline.

**AIRPORT REMARKS:** Special Air Traffic Rules-Part 93. Attended continuously. Para-sail and banner towing ops 1000' and blo in upper and lower New York bays including Rockaway Inlet indef. Flocks of birds on and in/ovf airport. High volume of low level helicopter t/c arriving and departing Helo Kearny Heliport (65NJ) located 3.5 miles northeast of the arpt. Expect to leave and re-enter the Class B airspace during moderate to heavy arrival periods. Rwy 04L-22R, south 1779' conc, north 1228' conc, center 7993' asph. ASDE-X in use. Operate transponders with altitude reporting mode and ADS-B (if equipped) enabled on all airport surfaces. Rwy 04R and Rwy 04L departures use upper antenna for ATC communications. Noise restrictions call 212-435-3784 during normal business hrs. Twy Z between Twy Z2 and Twy Z4 clsd to acft with wingspans in excess of 171'. ADG IV acft restriction from passing Twy Z3 on Twy Z. Twy Z east of Twy U acft speed restriction of 17kts/20mph max for all acft with wingspans in excess of 171'. All twys surrounding "ballpark" parking area (Twy Y btn Twy S and Twy U, Twy S btn Twy Y and Twy K, Twy K btn Twy S and Twy B, Twy B btn Twy K and Twy U and Twy U btn Twy B and Twy Y) acft speed restriction of 17kts/20mph for all acft with wingspans in excess of 171'. Twy EE btn Rwy 04R-22L and Rwy 11-29 clsd to acft with wingspans in excess of 171'. Twy Y btn RM and Twy U, speed restriction of 17 kts (20 mph). Twy PA btn Twy AA and ramp clsd to acft with wingspans in excess of 171 ft. Twy Z5 clsd to acft with wingspans in excess of 118'. Ldg fee. Flight Notification Service (ADCUS) avbl.

**AIRPORT MANAGER:** 973-961-6161

**WEATHER DATA SOURCES:** ASOS (973) 621-2892 LLWAS. TDWR.

**COMMUNICATIONS:** D-ATIS ARR 115.7 D-ATIS SOUTH ARR 134.825 (973) 824-4417. UNICOM 122.95

® NEW YORK APP/DEP CON 132.8 (241°-269°) 128.55 (090°-240°) 127.6 (270°-330°) 132.7 (331°-089°)

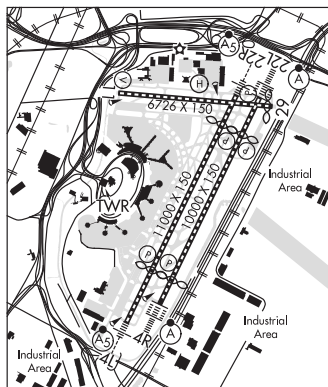
® NEW YORK APP/DEP CON 119.2

TOWER 118.3 134.05 GND CON 121.8 126.15 CLNC DEL 118.85

PRE TAXI CLNC 118.85 RAMP CTL 132.45

CPDLC DCL (LOGON KUSA)

PDC



CONTINUED ON NEXT PAGE

CONTINUED FROM PRECEDING PAGE

AIRSPACE: CLASS B See VFR Terminal Area Chart.

RADIO AIDS TO NAVIGATION: NOTAM FILE TEB.

**TEREBORO (T) VORW/DME** 108.4 TEB Chan 21 N40°50.92' W74°03.73' 218° 10.6 NM to fld. 3/11W.

DME unusable:

- 060°-080° byd 22 NM blo 2,500'
- 081°-120° blo 4,000'
- 121°-180° blo 3,000'
- 236°-246°

VOR unusable:

- 081°-120° blo 4,000'
- 121°-180° blo 3,000'
- 236°-246°

**ILS/DME** 110.75 I-EWR Chan 44(Y) Rwy 04L. Class IID. DME shared with ILS Rwy 22R.

**ILS/DME** 108.7 I-EZA Chan 24 Rwy 04R. Class IIIE. DME serves Rwy 04L and Rwy 22L. DME unusable byd 15 NM.

**ILS/DME** 109.15 I-GPR Chan 28(Y) Rwy 11. Glideslope unusable byd 5° right and left side of course and .7 NM (300' MSL) inbound. LOC unusable byd 25° left of course.

**ILS/DME** 108.7 I-LSQ Chan 24 Rwy 22L. Class IIE. LOC unusable byd 20° left of course.

**ILS/DME** 110.75 I-JNN Chan 44(Y) Rwy 22R. Class IT. AYRON OM is also used for Rwy 22L. DME shared with ILS Rwy 04L. Localizer unusable byd 20° left of course.



**HELIPAD H1:** H54X54 (ASPH) PERIMETER LGTS

**HELIPORT REMARKS:** Helipad H1 perimeter lgts. Brewster pad; H1 located on Twy Z5. Ops limits are D65.

**OCEAN CITY MUNI** (26N) 2 SW UTC-5(-4DT) N39°15.81' W74°36.45'  
6 NOTAM FILE MIV

**WASHINGTON**  
L-34G  
IAP

**RWY 06-24:** H2972X60 (ASPH) S-12.5 MIRL

**RWY 06:** PAPI(P2R)—GA 3.5° TCH 36'.

**RWY 24:** PAPI(P2L)—GA 3.5° TCH 37'. Tree. Rgt tfc.

**SERVICE:** FUEL 100LL LGT ACTIVATE MIRL Rwy 06-24—CTAF.

**AIRPORT REMARKS:** Attended Jun-Sep 1300-0100Z†, winter 1300-2100Z†.

Birds on and invof arpt.

**AIRPORT MANAGER:** (609) 525-9222

**WEATHER DATA SOURCES:** AWOS-AV 119.775 (609) 398-0705.

**COMMUNICATIONS:** CTAF/UNICOM 122.7

Ⓡ ATLANTIC CITY APP/DEP CON 124.6

CLNC DEL 133.6

**CLEARANCE DELIVERY PHONE:** For CD ctc Washington ARTCC at 703-771-3587.

**RADIO AIDS TO NAVIGATION:** NOTAM FILE ACY.

**ATLANTIC CITY (L) VORTACW** 108.6 ACY Chan 23 N39°27.35'

W74°34.58' 197° 11.6 NM to fld. 67/10W.

VORTAC unusable:

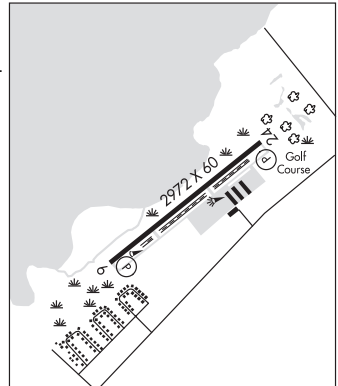
290°-300° byd 10 NM blo 4,000'

VOR portion unusable:

301°-355° byd 35 NM blo 2,000'

**CEDAR LAKE (L) VORW/DME** 115.2 VCN Chan 99 N39°32.26'

W74°58.03' 144° 23.5 NM to fld. 120/10W. NOTAM FILE MIV.



**OCEAN CO** (See TOMS RIVER on page 176)