

**MYRTLE BEACH INTL** (MYR)(KMYR) 3 SW UTC-5(-4DT) N33°40.78' W78°55.70'

25 B Class I, ARFF Index C NOTAM FILE MYR

**RWY 18-36:** H9503X150 (ASPH-GRVD) S-120, D-233, 2D-424,

2D/2D2-943 PCN 6R/B/W/T HIRL

**RWY 18:** MALS.R. PAPI(P4L)—GA 3.0° TCH 64'. RVR-TR P-line. Rgt tfc.

**RWY 36:** MALS.F. PAPI(P4L)—GA 3.0° TCH 71'. RVR-TR Trees.

**SERVICE:** S4 FUEL 100LL, JET A LGT When twr clsd ACTIVATE

MALS.R Rwy 18, MALS.F Rwy 36; HIRL Rwy 18-36—CTAF.

**AIRPORT REMARKS:** Attended 1100-0200Z†. Gulls on and invof arpt. No apvl rqrtd for pushback at terminal gates, push is at pilots discretion, remain clear of twys. Apron gates A7A, A7B, A7C for pushback apvl PPR twr 120.3. Sightseeing helicopters operating in close proximity of arpt and rwy at or blo 1200. Helicopter routes and holding points remain clear of rwy cntrns. Helicopters departing/arriving pad located 700' south/southeast apch end Rwy 36. Twy B4 clsd to acct more than 12,500 lbs. U.S. cstms user fee arpt. U.S. Cstms svc avbl Mon-Fri 1300-2200Z†, other times PPR and fee charged. Ctc MYR ops on CTAF 128.45 prior to ldg 0400-1100Z†.

**AIRPORT MANAGER:** 843-448-1580

**WEATHER DATA SOURCES:** AWOS-3PT 123.925 (843) 238-0335. LAWRS.

**COMMUNICATIONS:** CTAF 128.45 ATIS 123.925 UNICOM 122.95

Ⓡ APP/DEP CON 119.2 (322°-170°) 127.4 (171°-321°)

(1100-0400Z†)

**JAX CENTER APP/DEP CON** 134.375 (0400-1100Z†)

**TOWER** 128.45 (1100-0400Z†) **GND CON/CLNC DEL** 120.3

**AIRSPACE:** CLASS C svc ctc **APP CON** svc 1100-0400Z† other times CLASS G.

**RADIO AIDS TO NAVIGATION:** NOTAM FILE CRE.

**GRAND STRAND (L) VORTAC** 114.4 CRE Chan 91 N33°48.83' W78°43.47' 235° 13.0 NM to fld. 27/3W.

TACAN AZIMUTH unusable:

085°-095° byd 35 NM

290°-340°

341°-029° byd 25 NM

DME unusable:

085°-095° byd 35 NM

290°-340°

341°-029° byd 25 NM

VOR unusable:

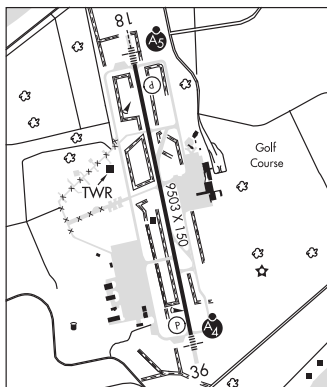
220°-225° byd 25NM

280°-310° byd 13 NM

**ILS/DME** 109.5 I-MYR Chan 32 Rwy 18. Class IIE.

**ILS** 111.9 I-BSQ Rwy 36. Class IE.

**COMM/NAV/WEATHER REMARKS:** ATIS freq 123.925 used to transmit AWOS wx data when twr closes.



**NEWBERRY CO** (EOE)(KEOE) 3 N UTC-5(-4DT) N34°18.56' W81°38.44'

570 B NOTAM FILE AND

**RWY 04-22:** H4001X75 (ASPH-AFSC) S-23, D-30 MIRL

0.9% up NE

**RWY 04:** PAPI(P2L)—GA 3.15° TCH 42'. Trees.

**RWY 22:** PAPI(P2L)—GA 3.15° TCH 43'. Tree. Rgt tfc.

**SERVICE:** S4 FUEL 100LL LGT ACTIVATE PAPI RWY 04 and Rwy 22 and

MIRL Rwy 04-22—CTAF.

**AIRPORT REMARKS:** Unattended. Fuel self-serve. Deer on invof arpt.

**AIRPORT MANAGER:** (803) 944-4298

**WEATHER DATA SOURCES:** AWOS-3 124.275 (803) 276-2419.

**COMMUNICATIONS:** CTAF/UNICOM 122.8

**COLUMBIA APP/DEP CON** 133.4

**CLEARANCE DELIVERY PHONE:** For CD ctc Columbia Apch at 803-822-4511.

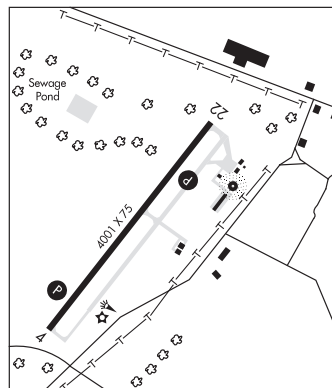
**RADIO AIDS TO NAVIGATION:** NOTAM FILE GRD.

**GREENWOOD (H) VORTACW** 115.5 GRD Chan 102 N34°15.09'

W82°09.25' 083° 25.8 NM to fld. 630/1W.

**ENOREE NDB (MHW)** 278 EOE N34°18.66' W81°38.18' at fld.

562/7W. NOTAM FILE AND. NDB unmonitored.



CHARLOTTE

L-24J

IAP